

INNOWELL ENGINEERING INTERNATIONAL PVT LTD

○ BENGALURU ○ CHENNAI ○ HYDERABAD ○ SIVAKASI ○ TIRUPUR ○ DHAKA



INNOWELL

An ISO 9001: 2015, 14001:2015, 27001:2022, and 50001:2018 Certified Company

Capability Statement – Data Centre

Inspired by Commitment. Powered by Passion.

OUR VISION

Innowell aspires to be a global leader for innovative solutions to its customers through passionate professionals

Core Values:

Integrity | Customer Excellence | People |
Learning | Innovative

MISSION



Develop

Nurture young talents



Empower

Empower talents with innovative process and standards



Care

Provide Challenging and joyful working Environment



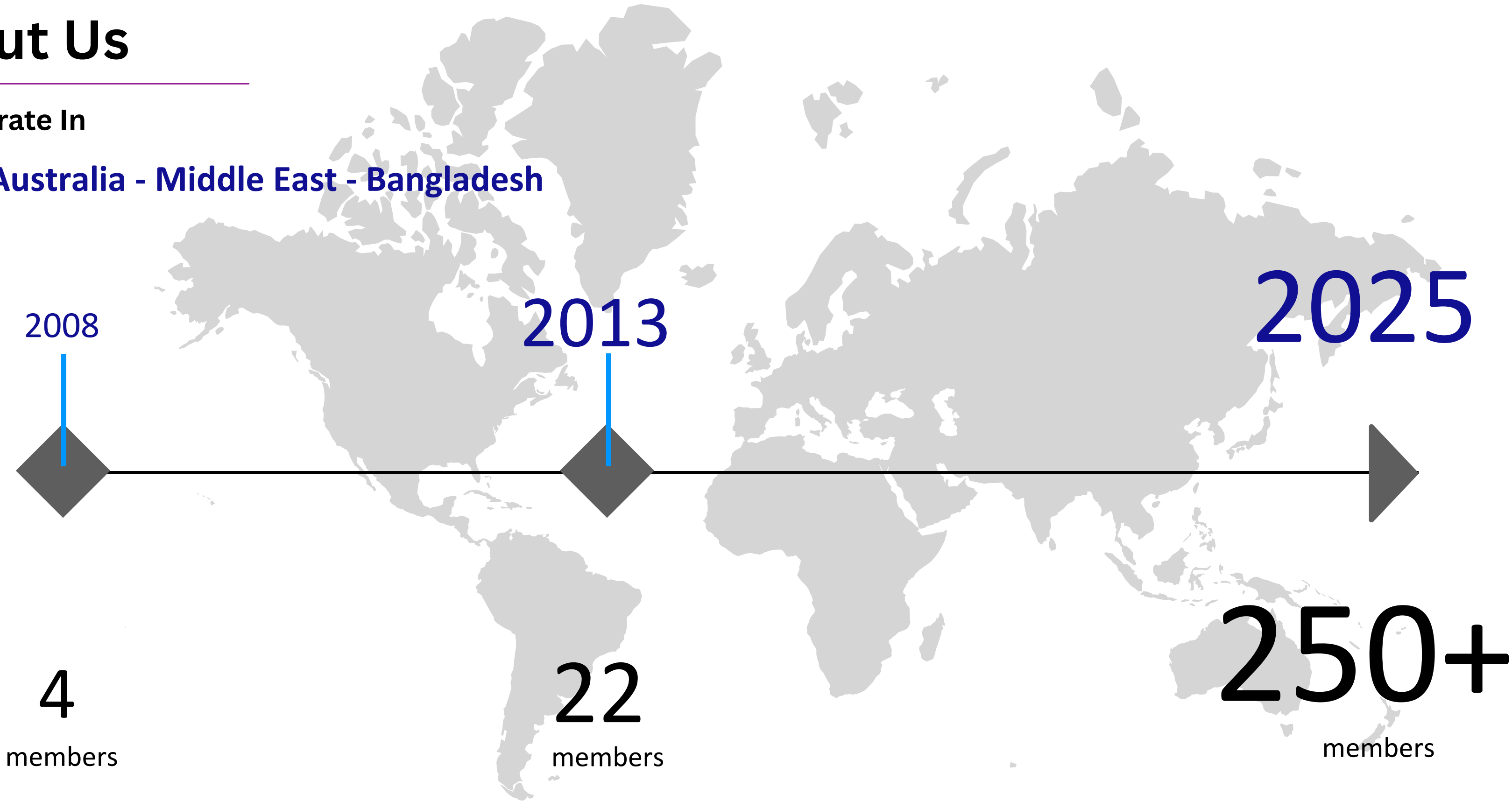
Serve

Continuously explore client's needs and serve better

About Us

We Operate In

India - Australia - Middle East - Bangladesh



Leading the Way in Sustainable Practices

We live by the same standards we help our clients achieve.



EcoVadis Rating

Achieving a **Bronze rating** from EcoVadis places us in the top 35% of companies assessed for our environmental, labor & human rights, ethics, and



LEED Proven Provider

Our designation as a LEED Proven Provider from GBCI highlights our expertise and track record in successfully guiding projects through the rigorous LEED green building certification process.



USGBC Membership

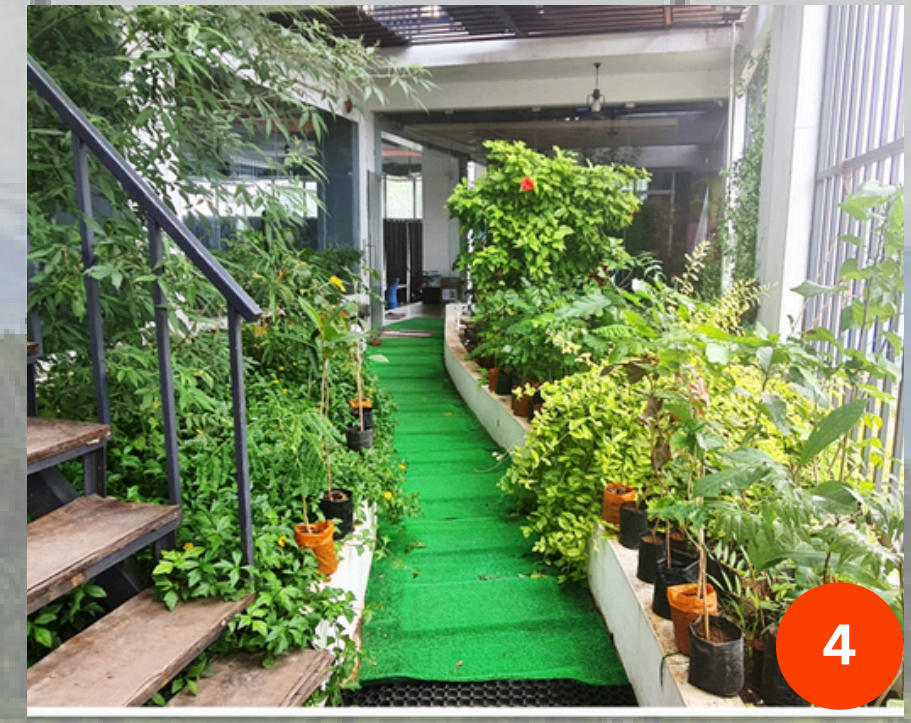
As a proud member of the U.S. Green Building Council, we actively support the development of sustainable, healthy, and high-performing green buildings and communities.



Our Village office

in Maraneri, Sivakasi, Tamilnadu, India

- 300% Efficient HVAC
- 200% Solar-Powered
- 100% Day-lighted
- 100% Views
- 55% Water Reuse
- 30% Roof Garden
- 39% Material Reuse



1. Solar Panel

2. Reused materials, proper lighting, ergonomic workstation.

3. Daylight design, hydration plants, aesthetic wall arts

4. Nature incorporated roof garden



INNOWELL

Certified on



**Achieved certification under the ISO 9001:2015, 14001:2015,
27001:2022, 45001:2018, 50001:2018 standard for
Integrated Quality Management**

THE WORLD'S HIGHEST LEED CERTIFIED

under v4.1 EB O&M Category



What we do



MEP

- HVAC
- Electrical
- Plumbing & Utility Design
- Fire Protection System
- IoT
- ELV



BIM

- BIM – MEP & Industrial Piping
- BIM – C&ID
- BIM – Consultancy
- BIM – Scan



Sustainability

- LEED
- IGBC
- GRIHA
- WELL
- WELL PV
- Carbon Reduction Programme

How we do

Design & Analysis Tools

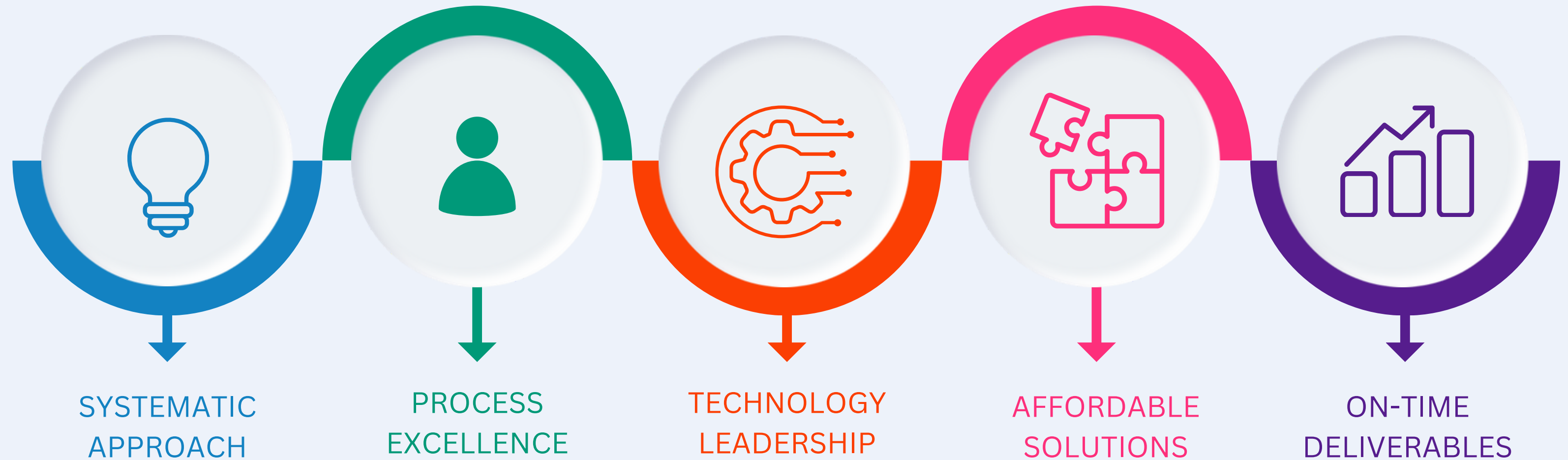
	Energy Simulation & System Selection		Day Light Analysis
	Modelling, Clash detection & Quantification		Drafting
	Energy Simulation & CFD Analysis		Real-time Rendering & Virtual Reality
	Engineering Calculations & Equipment selection (In-house development)		Lighting Design
	Technical Due Diligence & Quality Assurance (In-house development)		LEED feasibility analysis, Recommendations, BOQ
	Fire Fighting Hydraulic calculations		WELL feasibility analysis, Recommendations, BOQ

How we do

Collaboration & Documentation Management Platform	Internal Operations
---	---------------------

	Collaboration, Design Review & Construction Documentation		Project Scheduling, Collaboration, Internal Operations for Billing
			Innowell Performance Management System
			Online Learning Management System
	BIM Collaboration, Clash detection, Design Review		Task Planning, Cloud storage, Documentation and Communication
			Customer Relationship Management
			Data Analytics

Why Innowell



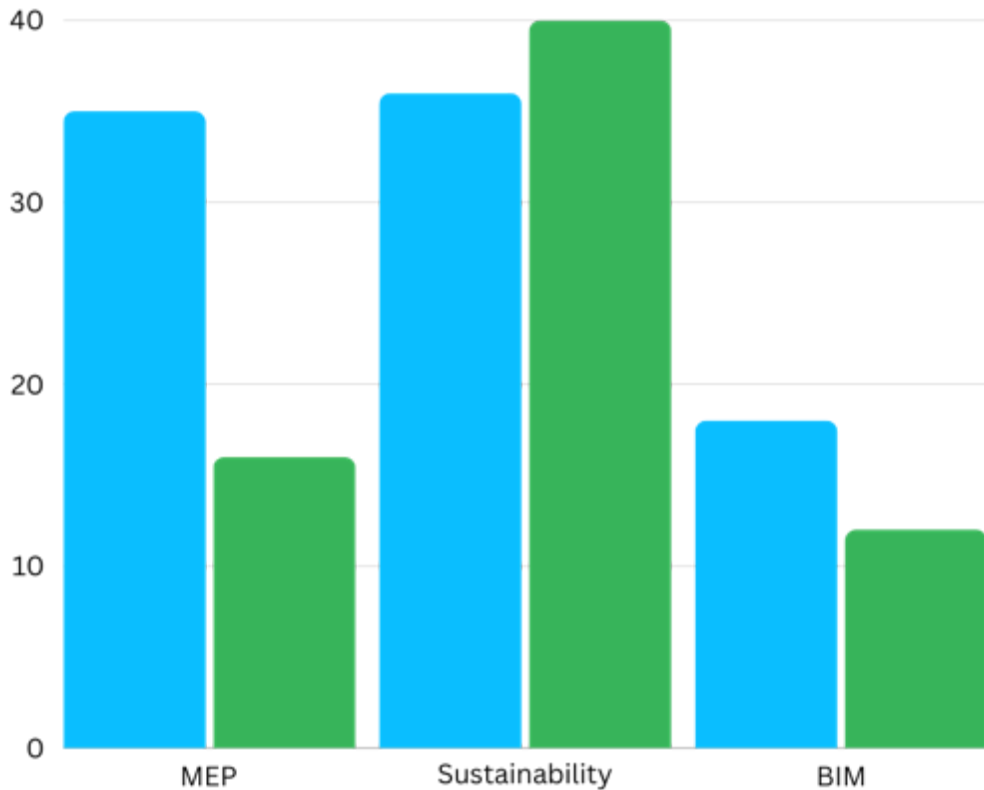
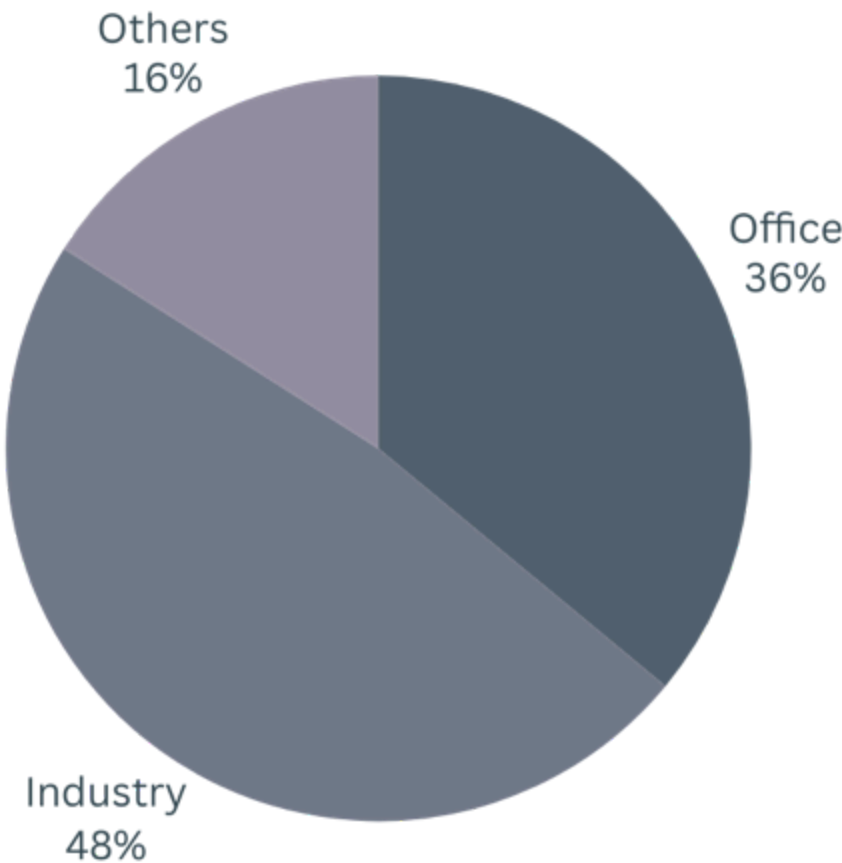
Project Accomplishment

Project Size in Mn SFT



Our Market Segments

- Commercial Buildings
- Office Fit-outs
- Data centres and Labs
- Hospitals
- Industries
 - Electronic Industries
 - Tyre Factories
 - Bottling Factories
 - Chocolate Factories
 - Textile and Garment Factories
- Clean room Applications



Completed



On-going

Leadership Profile



Gunasekaran

Director

LEED AP, WELL AP, WELL PTA



Sengathir Selvan

Director

Certified Data Centre Specialist
Certified Cleanroom professional



Sankareswari

Director



Leninkumar J

Associate Director



Regobert

Associate Director

IGBC AP



Pandidurai

Manager,
BIM

IGBC AP



Thalaiselvam

Senior Manager,
Corporate Sustainability

LEED AP, WELL AP,
IGBC AP, EDGE Expert,
TRUE Advisor,
GRIHA CP, LCA Specialist



Kalliani K

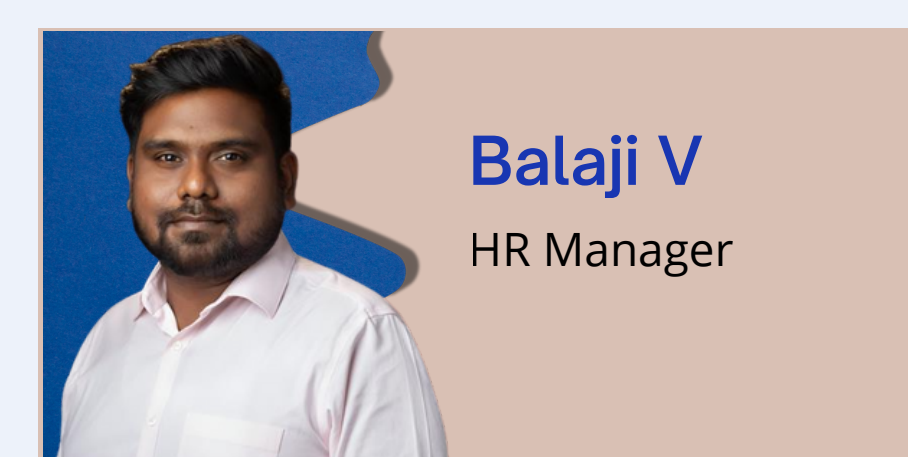
Principal Engineer -
Electrical



Subramaniam V

Senior Manager – Projects

Rising Leaders



DATA CENTRE PROJECTS

ARCHITECTURE | INTERIOR | ELECTRICAL | HVAC | PLUMBING | FIRE

MARIAN

Bangalore,
India

Project Size: 67,000 sq ft

- Office Space Interior Design – Workplace Interiors
- Design Consultant for Efficient Space Planning
- Ergonomic Furniture Layout and Aesthetic Solutions
- Lighting, Acoustics & HVAC Coordination
- Collaborative Workspaces with Modern Design Elements



MARIAN



DELL AI LAB

Bangalore

India

Project Size: 10,000 sq ft

- Interior & MEP Design
- Worlds 1st DELL AI LAB
- Overall Lab Load – 2090 kW



DELLTechnologies

STTelemedia GDC

KEY PROJECT - 2

Key Scope

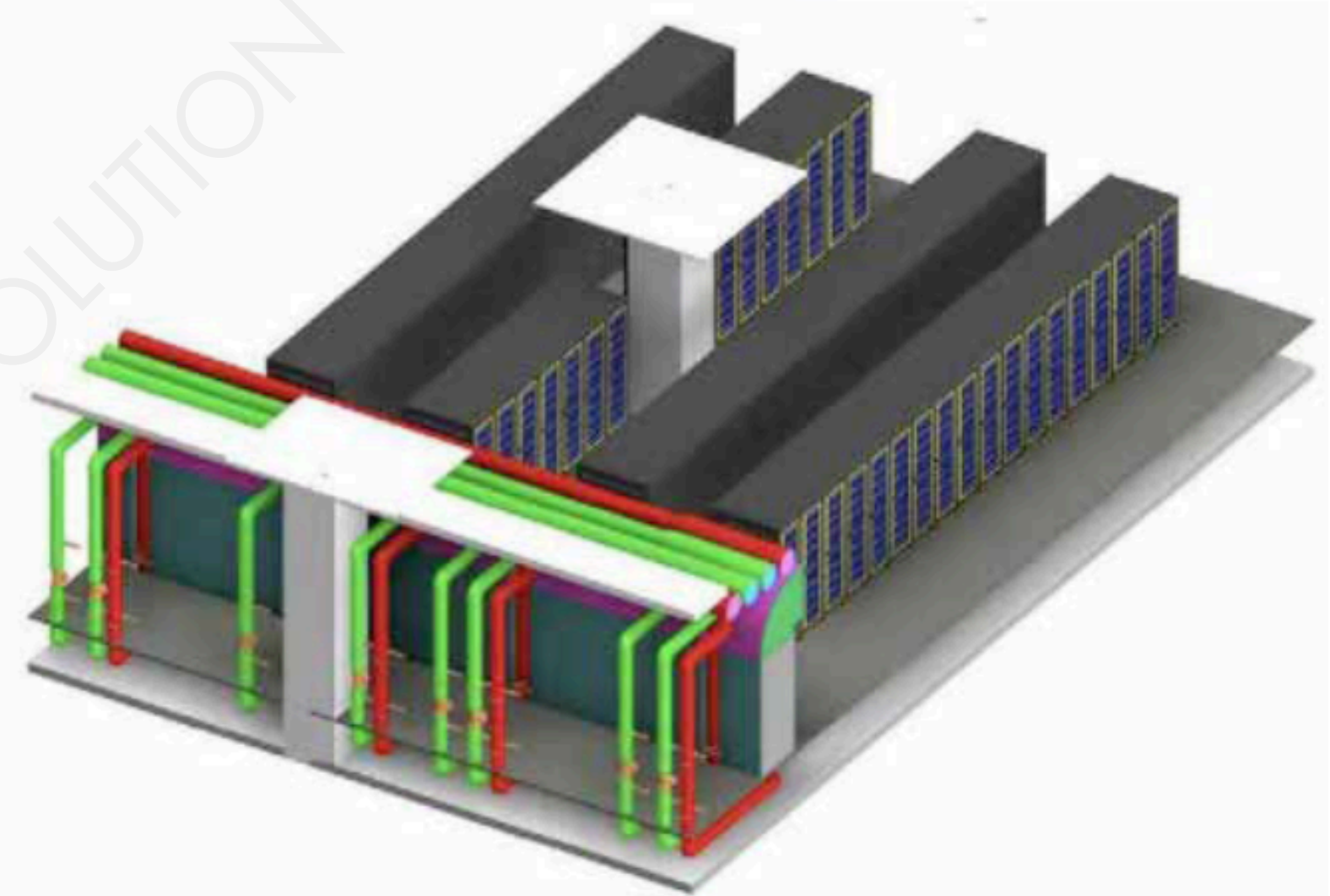
- HVAC design for data centre & allied rooms @ 5th floor
- New chiller plant design and integration with existing
- Analysis of thermal energy storage for existing plant
- Rain water storage tank design
- WTP & RO plant design
- Analysis of free cooling
- BIM

2.0 MW
IT Load

Tier 3 /R-4
Certification

Up to 99.999%
Uptime

Chennai
Tamilnadu, INDIA



STTelemedia GDC

KEY PROJECT - 3

Key Scope

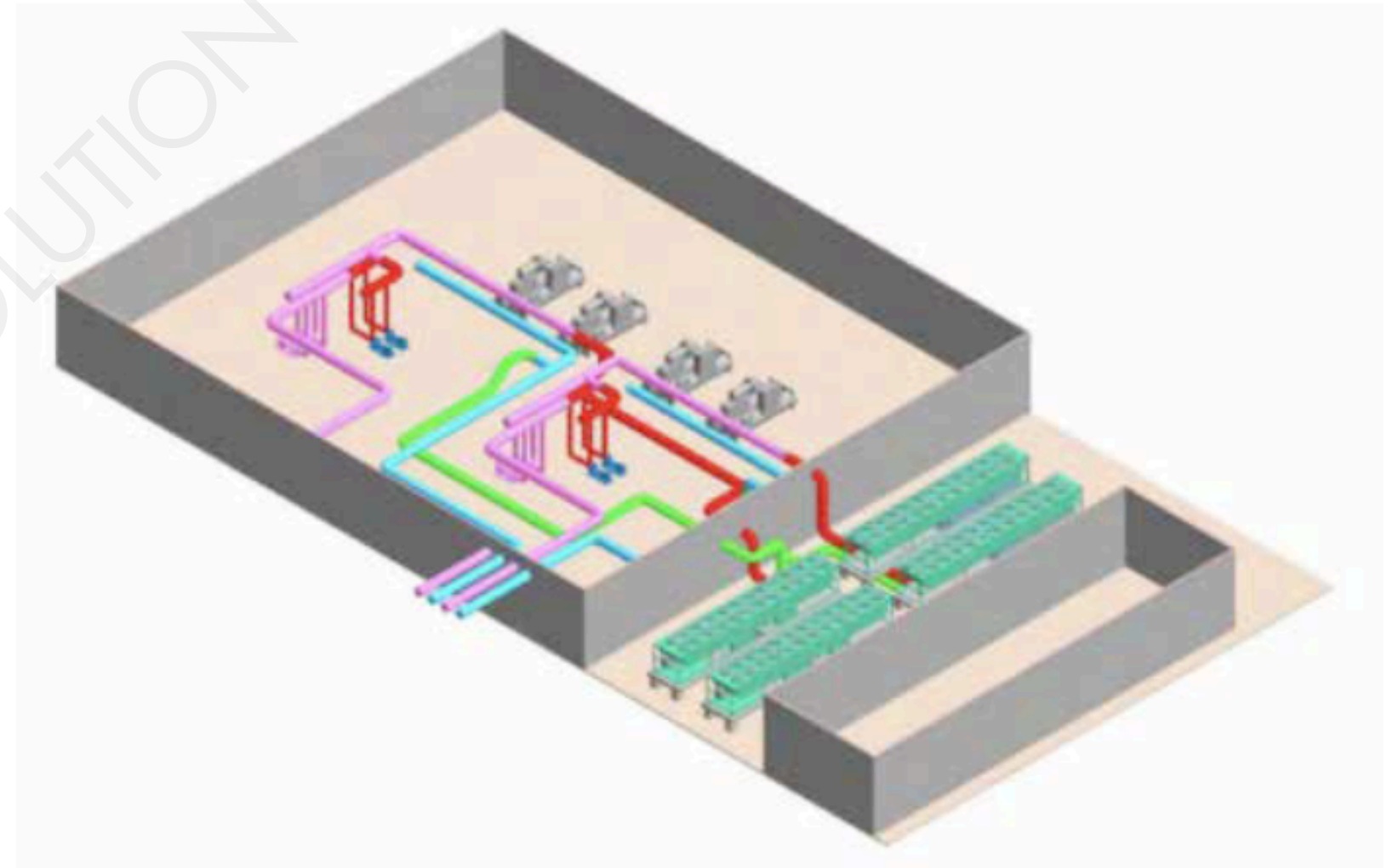
- Facility Audit for existing HVAC system
- De-risking & energy efficiency measures
- Designing additional / standby air-cooled chiller plant

9.5 MW
IT Load

Tier 3 /R-4
Certification

Up to 99.999%
Uptime

Pune
Maharashtra, INDIA



INNOWER

Innowell Engineering International
Pvt limited

Contact the SPOC for additional details

Gunasekaran Raju, +91 99400 83095, Alternative Number : + 91 95000 56868

guna@innowergroup.com; sengathir@innowergroup.com

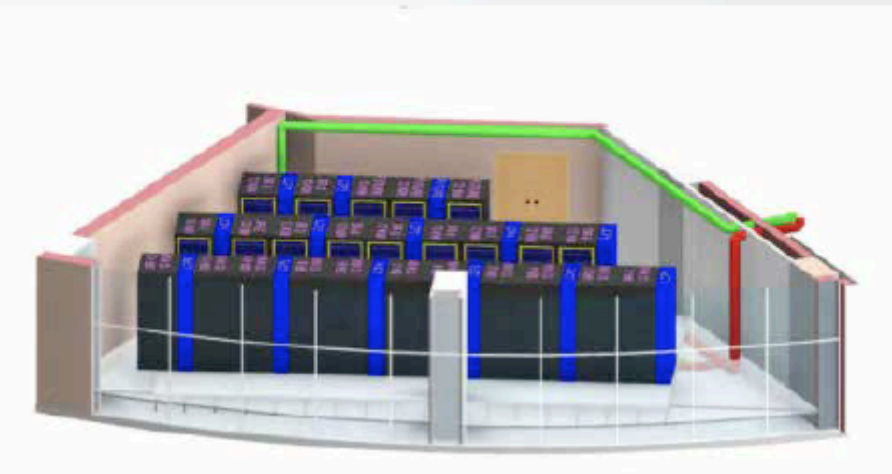
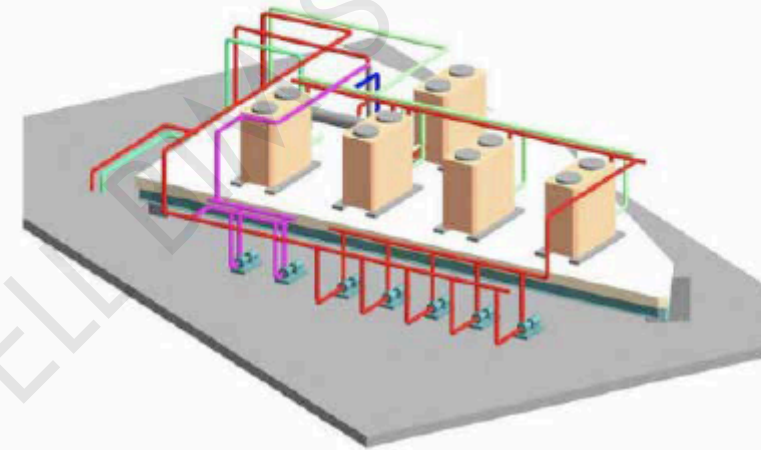
innowergroup.com

ZOHO

KEY PROJECT - 6

Key Scope

- MEP Design Coordination on BIM
- HVAC & BMS Design
- Elevated CHW Temperature & Primary Variable
- New Chiller Plant integration with existing



180 KW
IT Server Load

Tier 3
Certification

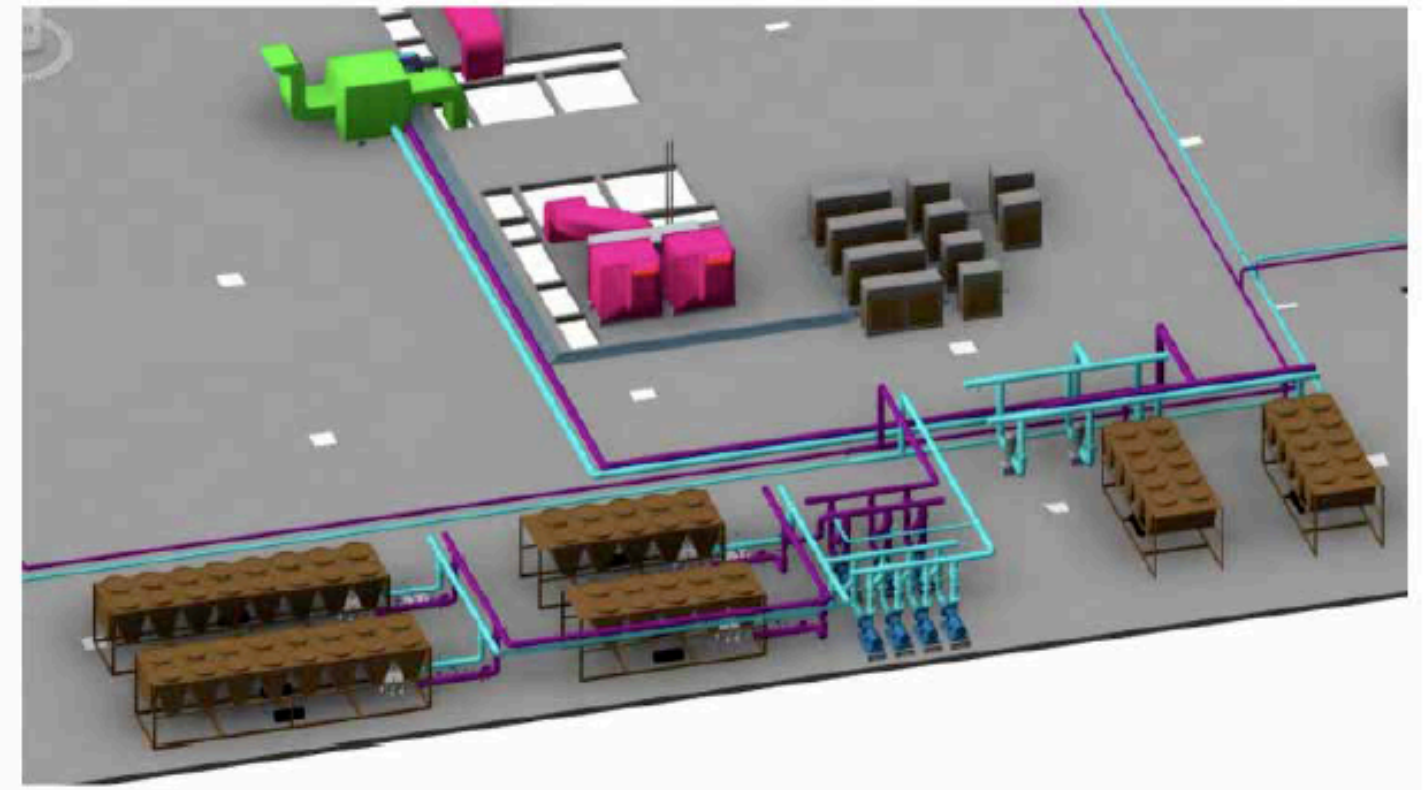
In-rack Cooling
First Time

Chennai
Tamilnadu, INDIA

DELL @CrystalDawns

KEY PROJECT - 5

DELL



1200 kW
IT Load

Tier 3
Certification

Bengaluru
Karnataka, INDIA

Key Scope
MEP Design for new labs



INNOWELL

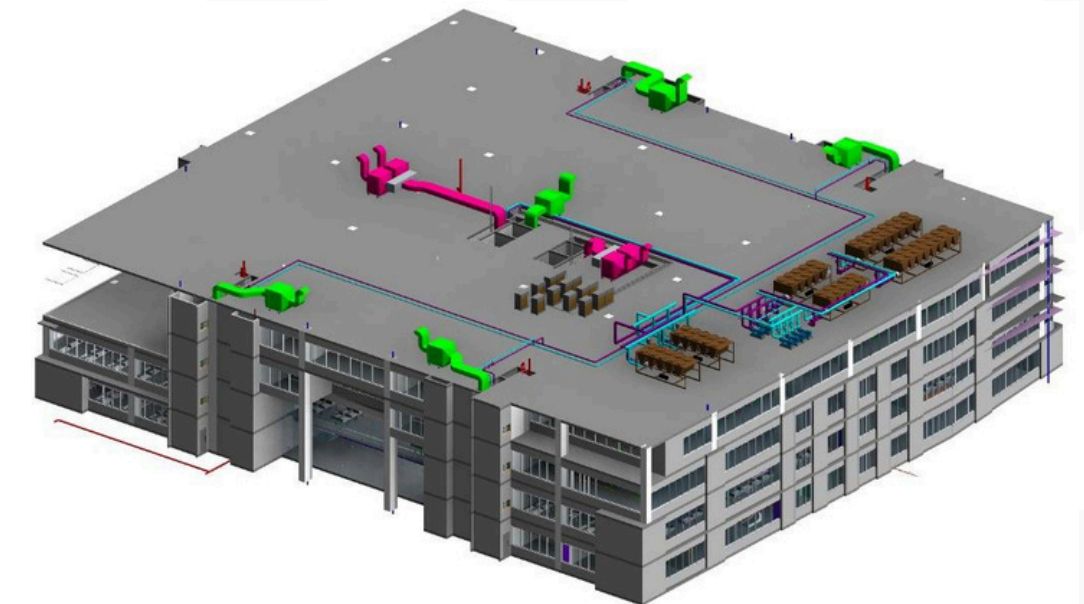
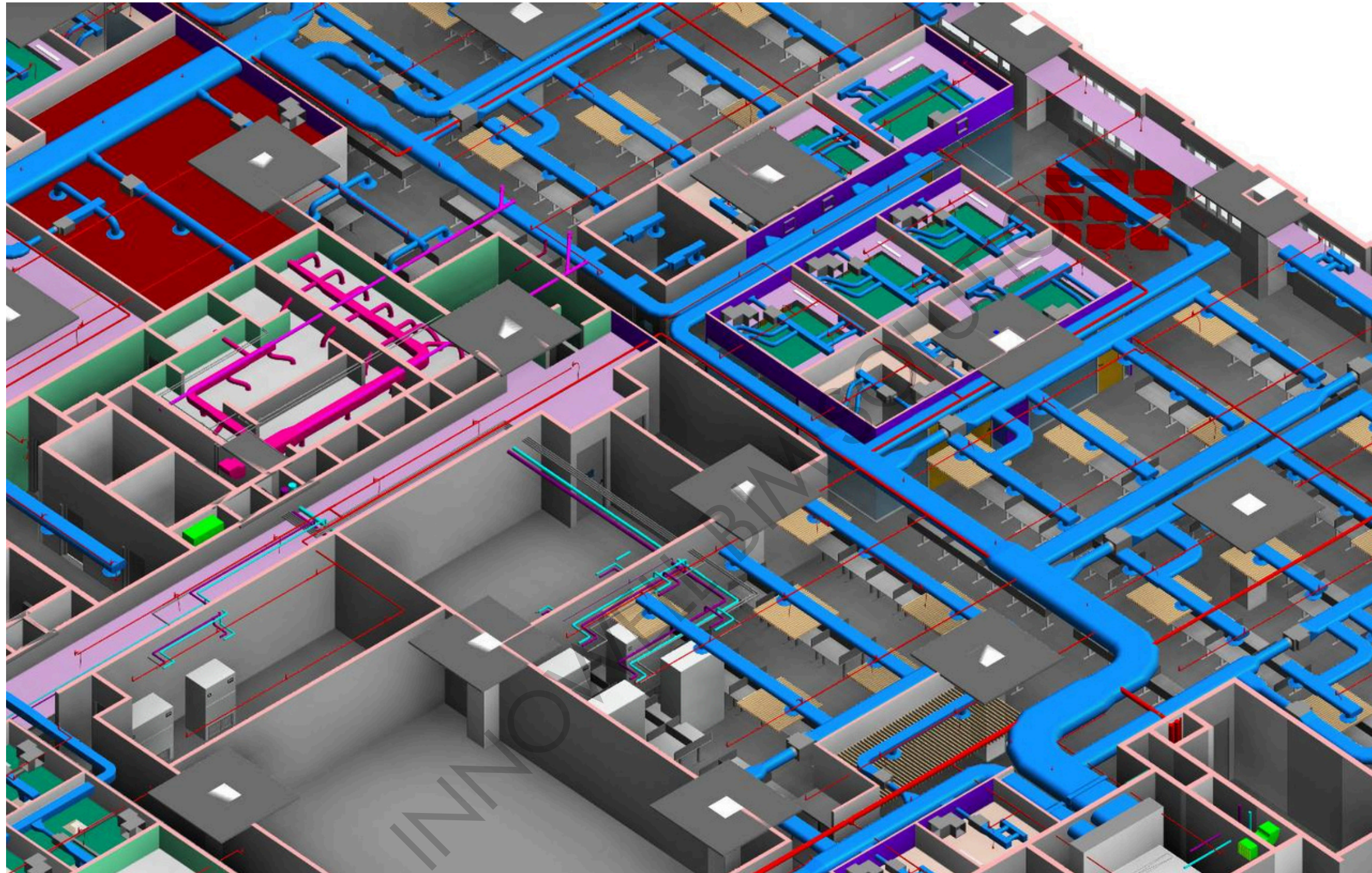
Innowell Engineering International
Pvt limited

Contact the SPOC for additional details

Gunasekaran Raju, +91 99400 83095, Alternative Number : + 91 95000 56868

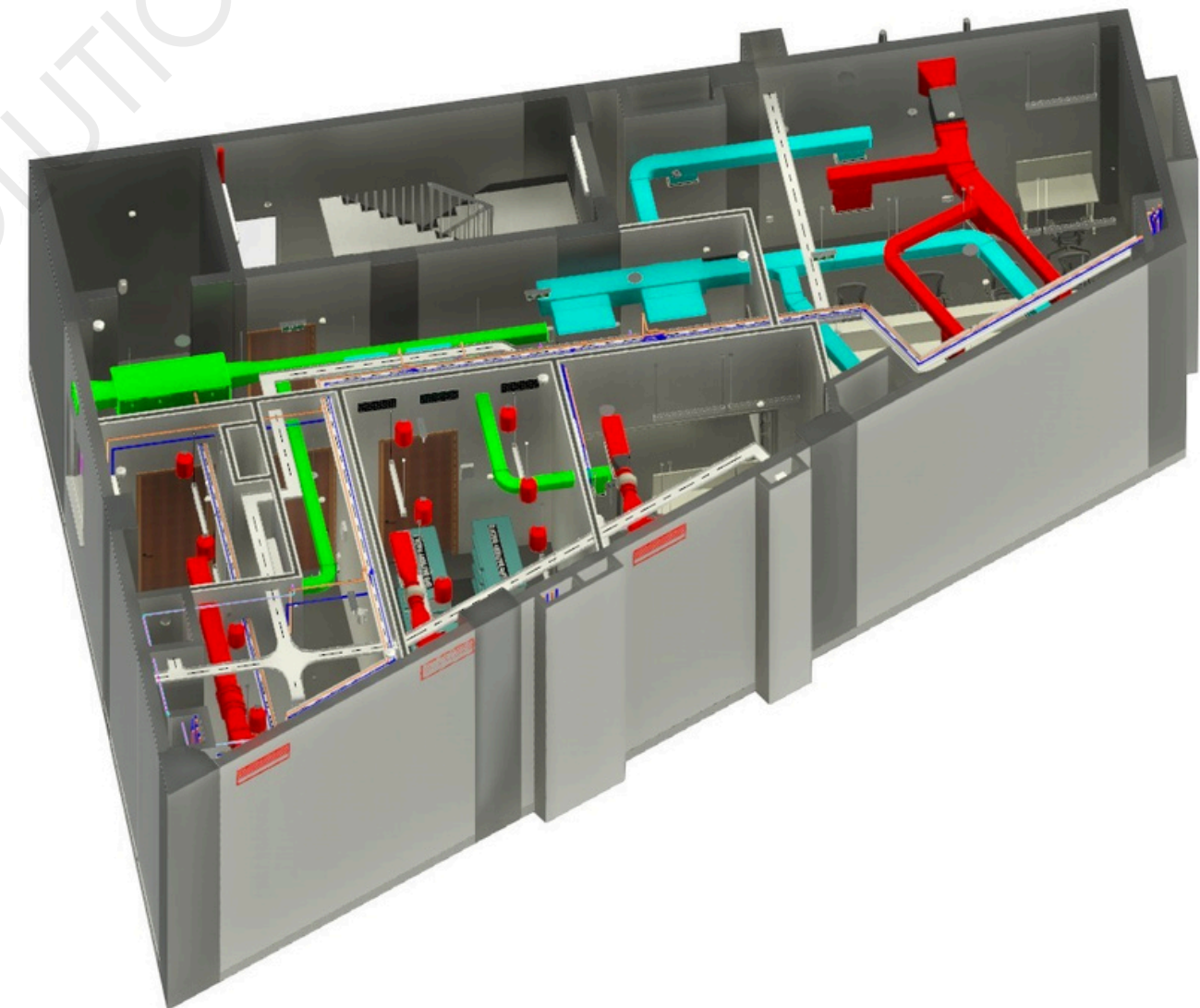
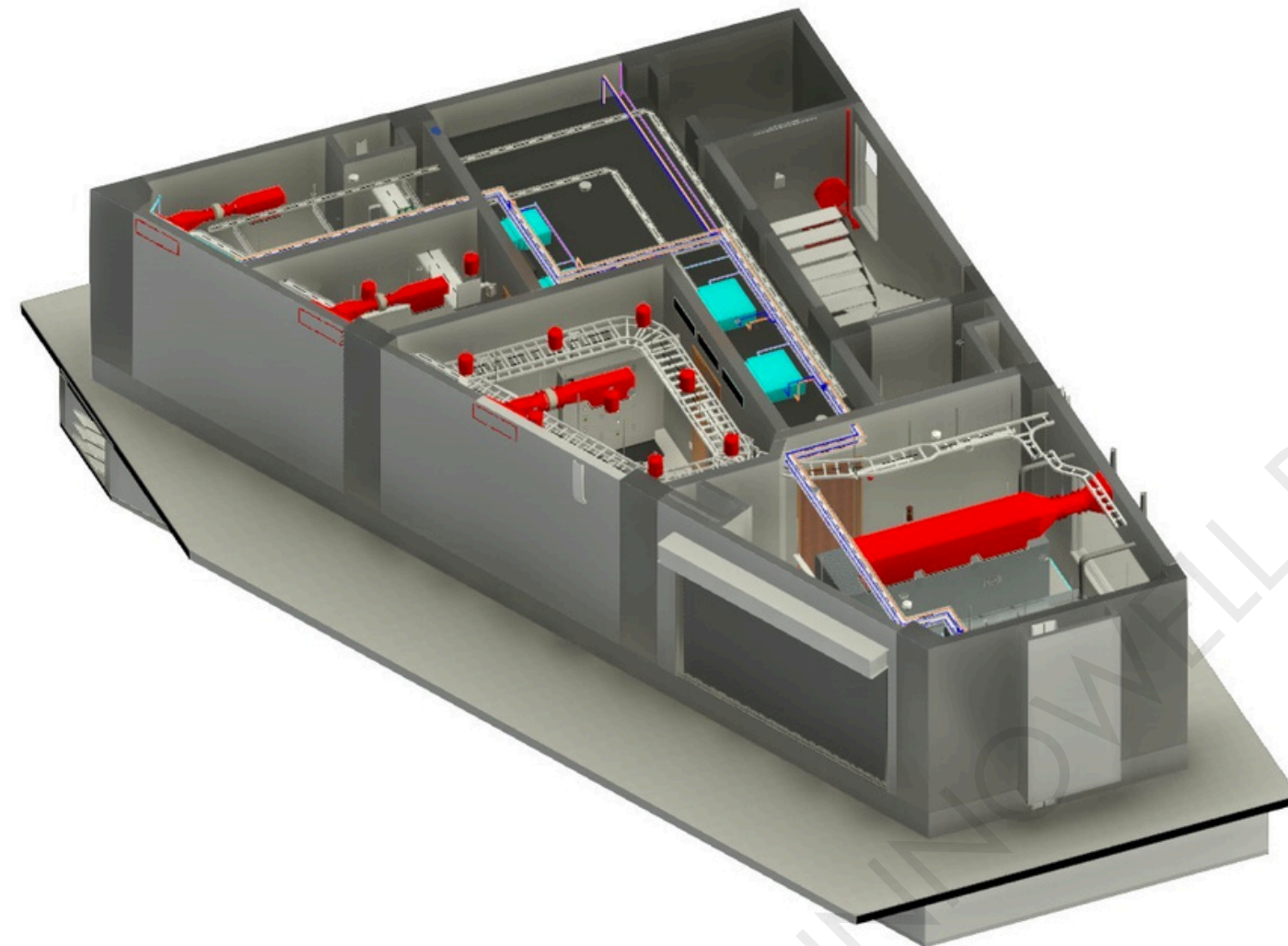
guna@innowellgroup.com; sengathir@innowellgroup.com

innowellgroup.com

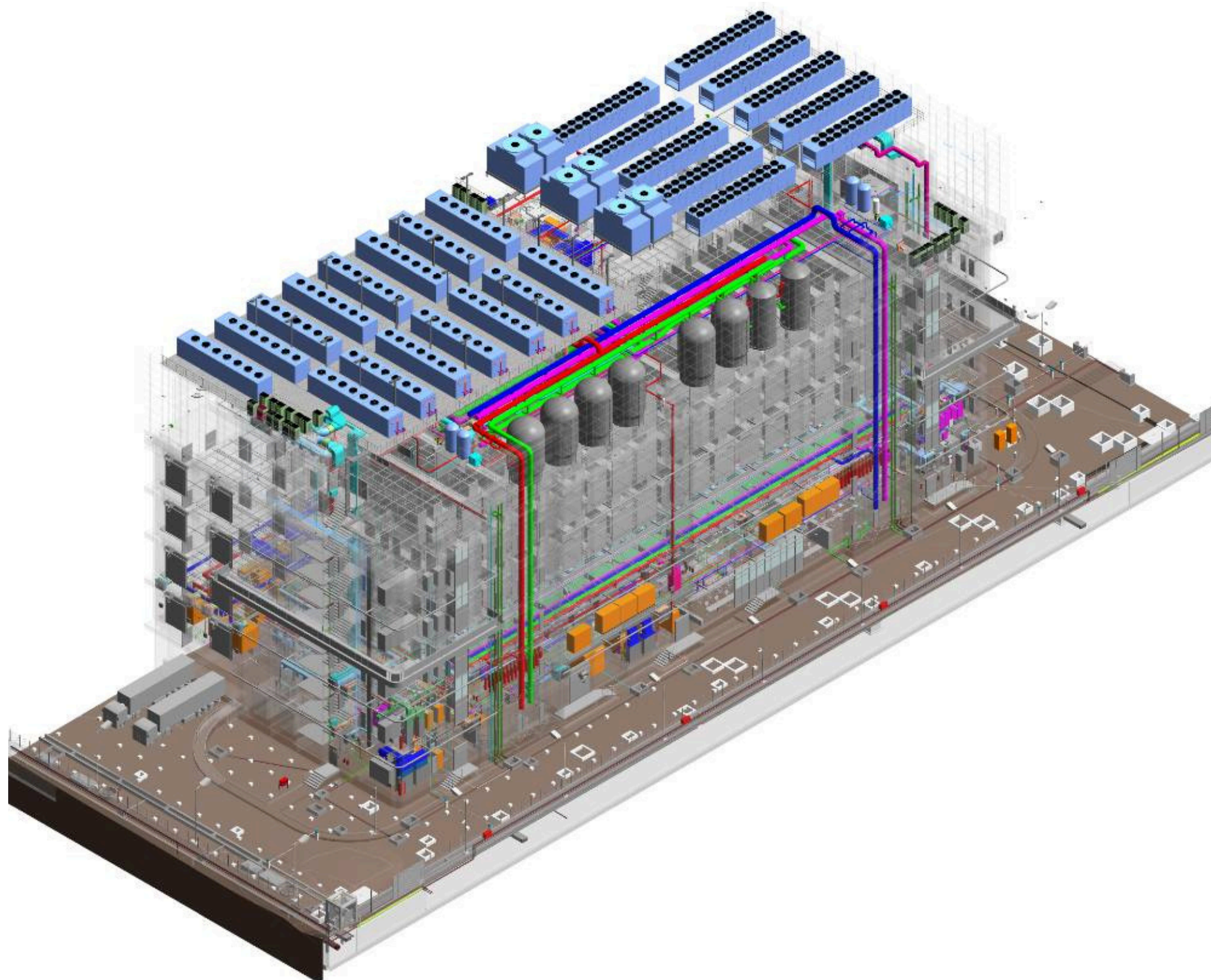


Project : DELL CD, INDIA | Scope : MEP Design, Model Coordination & Quantification | Area : 2,00,000 sq.ft





Project : NTT CLS, CHENNAI | Scope : MEP Design, Interior Design, Model Coordination & Quantification



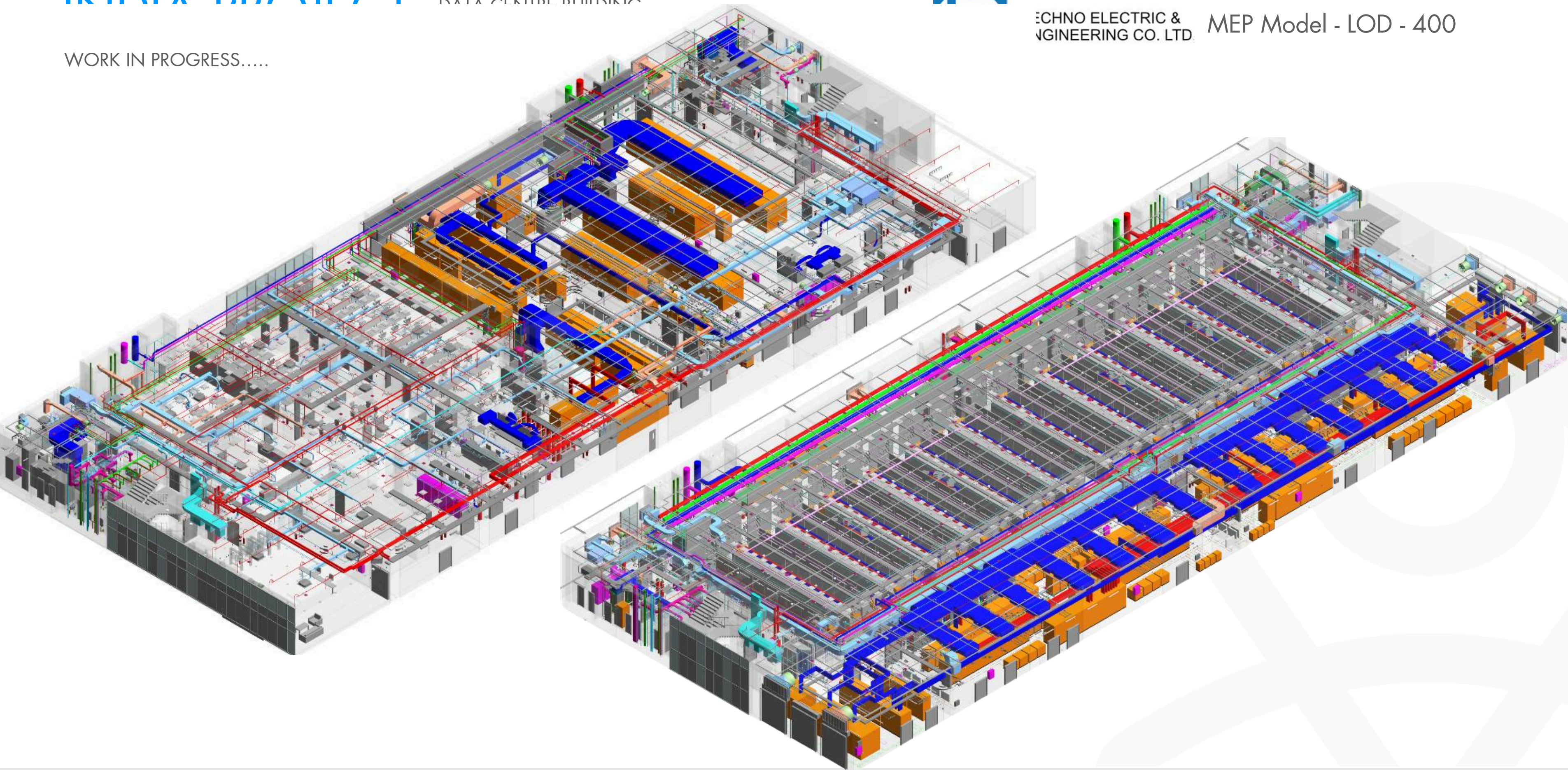
Project : Techno, CHENNAI

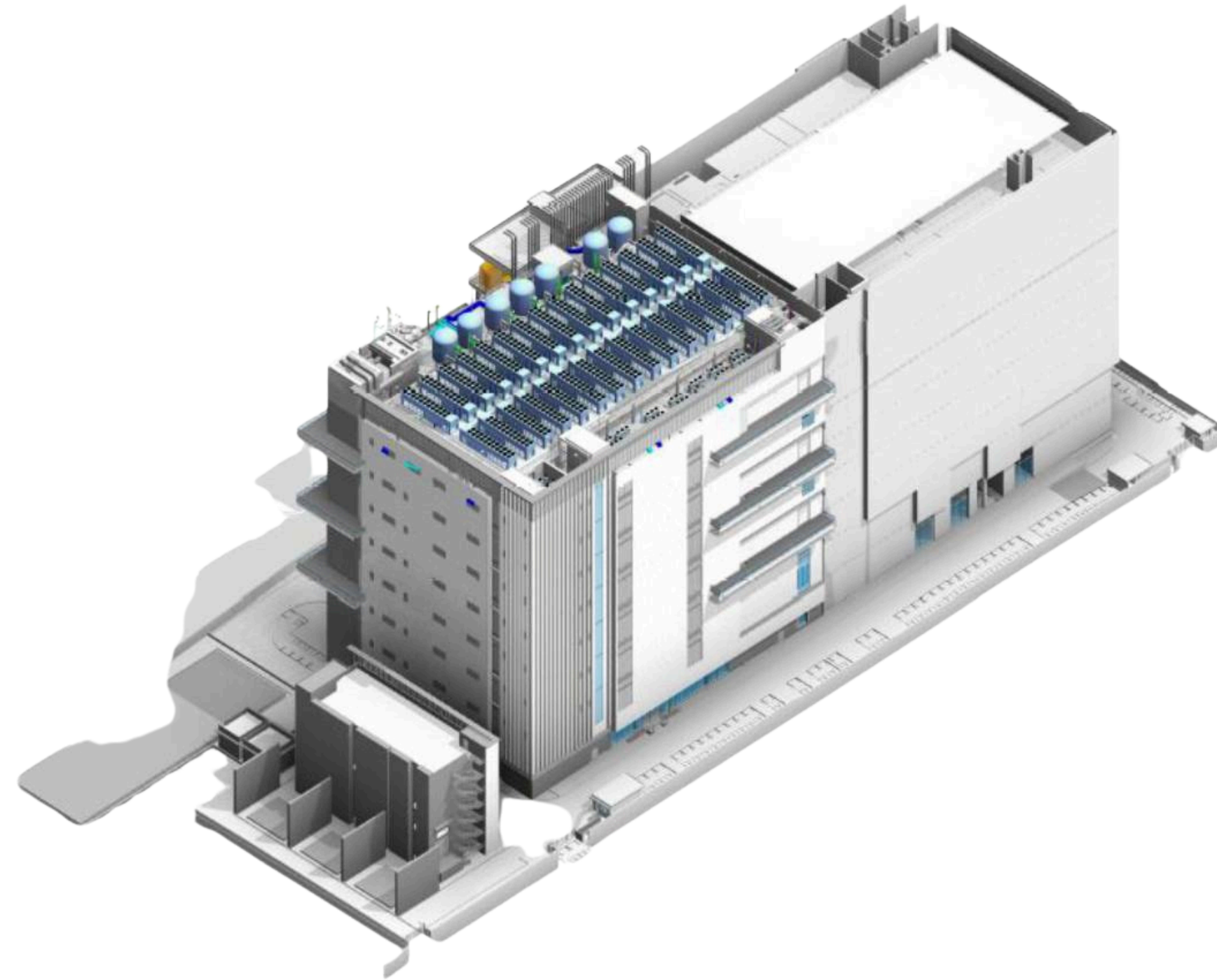
Scope :

MEP Model Coordination
Shop drawings
Quantification
As-built Modelling



WORK IN PROGRESS.....





Project : Veritas DC, Mumbai

Scope :

Detailed Engineering
MEP Model Coordination
Shop drawings

GREEN DATA CENTRES



CtrlSTM

4 MW
IT Server Load

Tier 4
Certification

1000
Racks

Chennai
Tamilnadu, INDIA

Key Scope:

- Green Building Consultancy

LEED Platinum (89 Points)

Certified
Obtained on 2017



GREEN DATA CENTRES



India's first Rated 4 Data Center



10 MW

IT Server Load

Tier 3

Certification

1400

Racks

2,42,122 Sq.ft

Built Up Area

Hyderabad

Telangana, INDIA

Key Scope:

- India's First Rated 4 Hyperscale Datacenter
- N+N Uninterruptible UPS, Utility Power Substation & Diesel Generator Redundancy For Continuous Support
- N+1 Cooling System Redundancy For Better Temperature Management
- Industry Best Uptime SLA (99.995%)

LEED Platinum (85 Points)

Certified

Obtained on 2019



GREEN DATA CENTRES

Achieved



LEED Service

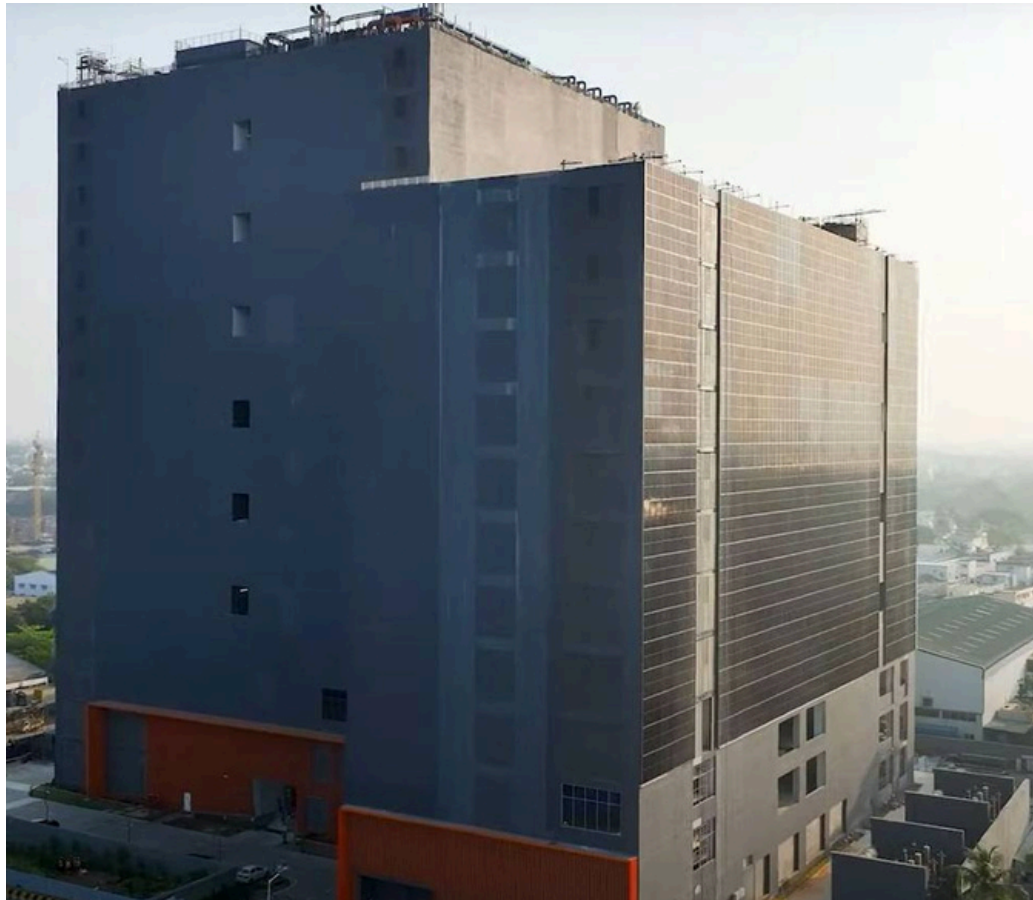
National Stock exchange India Ltd is one of the leading data centre in India This project achieved Platinum in 2016 Rating under LEED New construction rating system.

The project implemented Energy efficient lighting , and energy efficient HVAC systems.

1.25 MW Off - site renewable energy has been implemented



GREEN DATA CENTRES



World's second-highest point achieved under the LEED v4 BD+C: Data Center rating system.



CtrlSTM

Project : CtrlS DC, Chennai

Rated-4 Facility

Built Up Area: 1 Million Sq.Ft.

IT Load Capacity: 72 MW

Key Scope: Green Building Consultancy

LEED Platinum (99 Points)

Obtained on 2025



GREEN DATA CENTRES



CtrlS™

Project : CtrlS DC, Kolkata

Capacity: 16 MW IT Load

Key Scope: Green Building Consultancy (On-going)



GREEN DATA CENTRES



CtrlSTM

Project : CtrlS DC, Ahmedabad

Capacity: 16 MW IT Load

Key Scope: Green Building Consultancy (On-going)



GREEN DATA CENTRES



CtrlS[™]

Project : CtrlS DC, Patna

Capacity: 0.75 MW IT Load

Key Scope: Green Building Consultancy (On-going)



GREEN DATA CENTRES



CtrlSTM

Project : CtrlS DC 3, Mumbai

Capacity: 8 MW IT Load

Key Scope: Green Building Consultancy (On-going)



GREEN DATA CENTRES



CtrlS™

Project : CtrlS DC 6&7, Mumbai

Key Scope: Green Building Consultancy (On-going)



GREEN DATA CENTRES



CtrlSTM

Project : CtrlS DC 3, Hyderabad

Capacity: 13 MW IT Load

Key Scope: Green Building Consultancy (On-going)



VIKRAM SOLAR LTD

Chennai, Tamilnadu,
India

Project Size: 0.5 million sq ft

- Turnkey Design (Architecture & MEP)
- Solar Panel Manufacturing
- Fully Conditioned Space
- Design of Sub - Structure
- Design of Utility Buildings & Services





Electronic / Defense Factories

Projects	Type	Scope	Location	Area (Sq.ft)
Salcomp	Mobile phone accessories	MEP Design, BIM, Cleanroom Design	Chennai	7,00,000
Tata Advanced Systems Ltd	Defence	MEP Design, Cleanroom design	Bengaluru	2,00,000
Tata Electronics	Mobile Phone assembly	Architecture, MEP Design	Chennai	4,50,000
Vikram Solar	Solar Panel Manufacturing	Architecture, MEP Design	Chennai	5,00,000
Marian	Defence	Architecture, Structural Design, MEP Design, Cleanroom design	Bengaluru	1,25,000
Visteon	Car AV Components Assembly	MEP Design, Cleanroom design	Chennai	7,000
Dell Factory	Laptop assembly	MEP Design, Architectural Design	Chennai	2,50,000
Nokia Solutions & Network	Telecom equipment assembly	MEP Design	Chennai	1,20,000
Aptiv	Car AV components assembly	MEP Design, Cleanroom Design	Chennai	80,000

Experience our futuristic Design Process



Key Approach

ContentsElectrical

JLR-PH2-MEP- Due Diligence report-R0
Revision R0 (Sep 19, 2023)

Project Details

Client Name
JLR

Audit Date
Sep 9, 2023

Audited By
jayant Kumar

Recommendation

Information

Low Risk

Medium Risk

High Risk

Continues from Previous page

Checkpoints 4- 6 of 14

S.no	Checkpoint	Comments/Observation	Category	Yes/No
4	Check the body Earth Flat provision availability and its Rooting's.	As Confirmed by PMC, For fifth floor, new earth pit has to consider and instead of tapping from the Builder Body Earth Flat.	Information	Yes
5	check the No. of earth pit Available, If required check the space availability for Earth pit Provision.	As discussed with PMC, For Fifth floor, new Earth pit has to provide for dedicated & Body earthing. Distance Between the Electrical shaft to new earth pit provision is around 150 meter.	Information	Yes
6	Check whether the Common Area Power supply like Lift area, Toilet, Stair case, AHU panel Incoming power supply shall be Provided by Builder Or MEP Consultant ?	According to site observations and discussions with the PMC, the common area power supply is under the builder's scope. However, the tenant will also provide MEP services based on the tenant's requires. Additionally, it was suggested to demolish the lift lobby and design a new lift lobby in Compliance with JLR guidelines.	Information	Yes

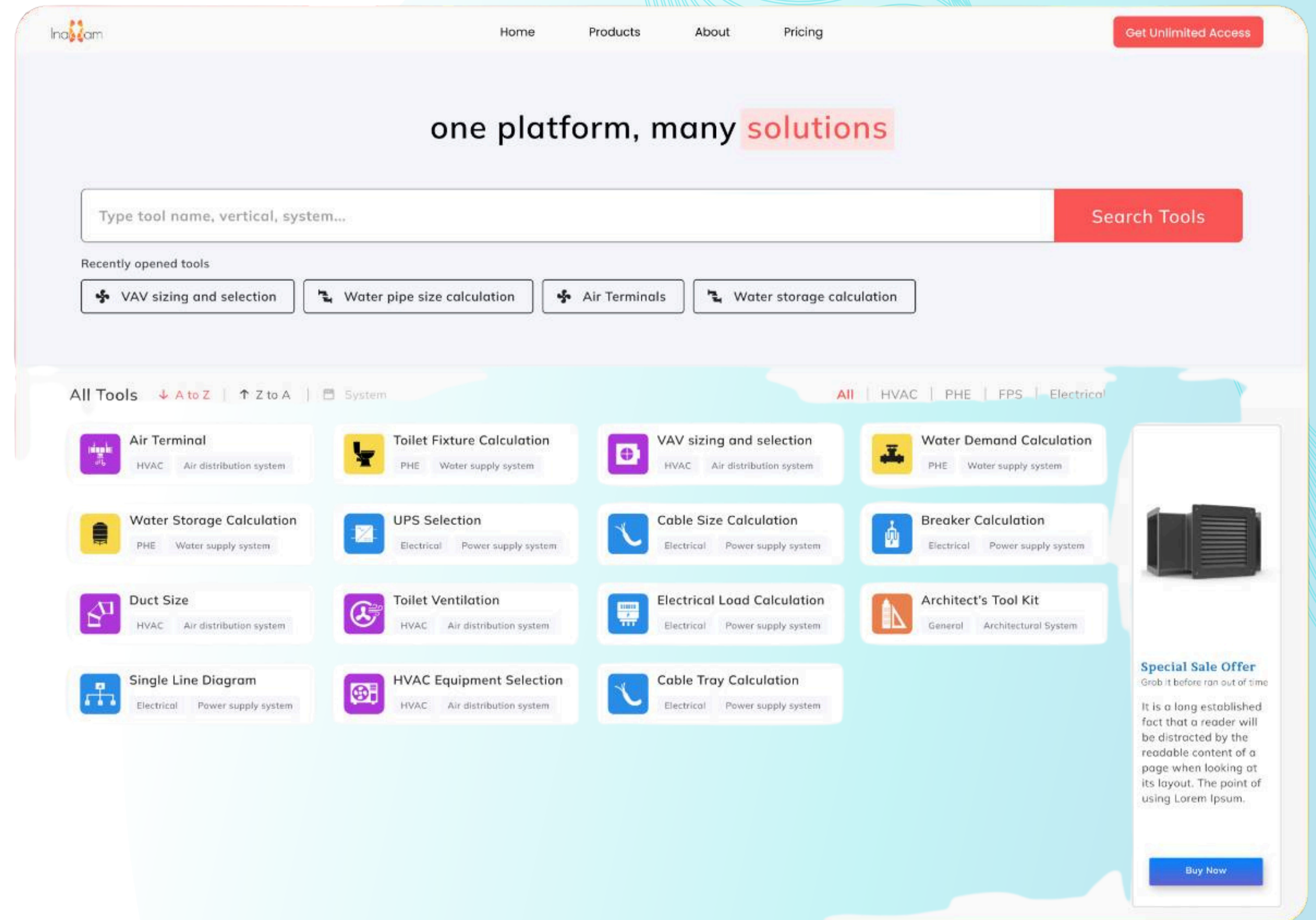
Informed, accurate and automated Technical due diligence report

Key Approach



INAKKAM

- 100% Design Accuracy
- Lightning-fast Deliverables
- Optional Analysis for optimal selection
- 1000s of product data base
- Integration of standards (NBC, LEED)
- AI based prediction



Our MEP designs are created using an automated design platform

Key Approach

INAKKAM



Due-diligence tool kit

Project Name : General

Project Id : Not Applicable

Building Classification

Business

Building Type

Office

Size of floor

Length

30

m

Width

40

m

Height

4

m

No of floors

13

Ground and above

4

Basement floors

Total Built-up Area

15600

Sq.m

Floor Built-up Area

1200

Sq.m

Total Occupancy

1560

Headcount Per Floor

120

Male - Female ratio

50

%

50

%

Codes & Standards

NBC

TSS

Sustainability Ratings

LEED

Architectural

Life safety

Toilet

Plinth Height

0.15

m

Fire Sprinkler

Yes

No

Number of Refuge terrace

2

Nos

Total Area of Refuge terrace

48.00

Sq.m

No. of Fire Compartments per floor

2

Nos

Ramp Dimension

W 1.20

m

L 1.80

m

Buy Team Pack And Get 25% Off

It is a long time established in fact that is a reader and now or never offer till established in fact that is a reader and now or never offer.

Automated Engineering Tools for using previous project experience, best accuracy, reliability and faster delivery.

INNOWELL

24

Key Approach



Air Terminals Selection | HPE - Metro

Room Dimension

Length

30

m

Width

15

m

Area

450.0

m²

Height of (BOS)

4

m

Height of (BOFC)

3.5

m

Supply Air Flow Rate

10701

CMH

Return Air Flow Rate

10701

CMH

Noise Level

35

NC

Air Terminal Options

All

Supply

Return

S.No	Manufacturer & Image	Type	Neck Velocity m/s	Quantity No(S)	Air Terminal Neck Size mm	Air Flow Rate / Terminal CMH	Noise Level NC	Total ADPI	Cost Indicator
1		Supply	4.4	8 5 @ Less	Neck Size Dia 290 Overall Size 600 x 600	1337	29 6 NC Less	-	1.00
		Return	3.2	11 3 @ Less	Neck Size Dia 290 Overall Size 600 x 600	972	18 17 NC Less	-	
					Neck Size Dia 250				

UPS e-select | HPE - Metro

IT/ITES

Data Centre

Manufacturing

Others

Output Power Load

300

KVA

Modular

Load Factor (%)

80 %

Future Expansion (%)

0 %

Redundancy

N

N+1

N+N

2N+1

Form Factor

Floor Mounted

Rack Mounted

Manufacturer

Floor Space

Cost

Relative Reliability Benchmark

200 KVA x 4
(25 x 8 Modules on Each)
[Show more](#)

248 Sqft
UPS Only

₹ 8,700,000

35% Space Saving

19% Cost Saving

100%

★★★★★

375 / 400 KVA x 2
(25 x 15 Modules on Each)
[Show more](#)

173 Sqft
UPS Only

₹ 9,200,000

55% Space Saving

15% Cost Saving

100%

★★★★★

Automated Engineering Tools for using previous project experience, best accuracy, reliability and faster delivery.

Key Approach

INNOWELL

Lessons

FileAutomationFormsConnections

Innowell - MEP Lesson Learnt

Share

Grid View

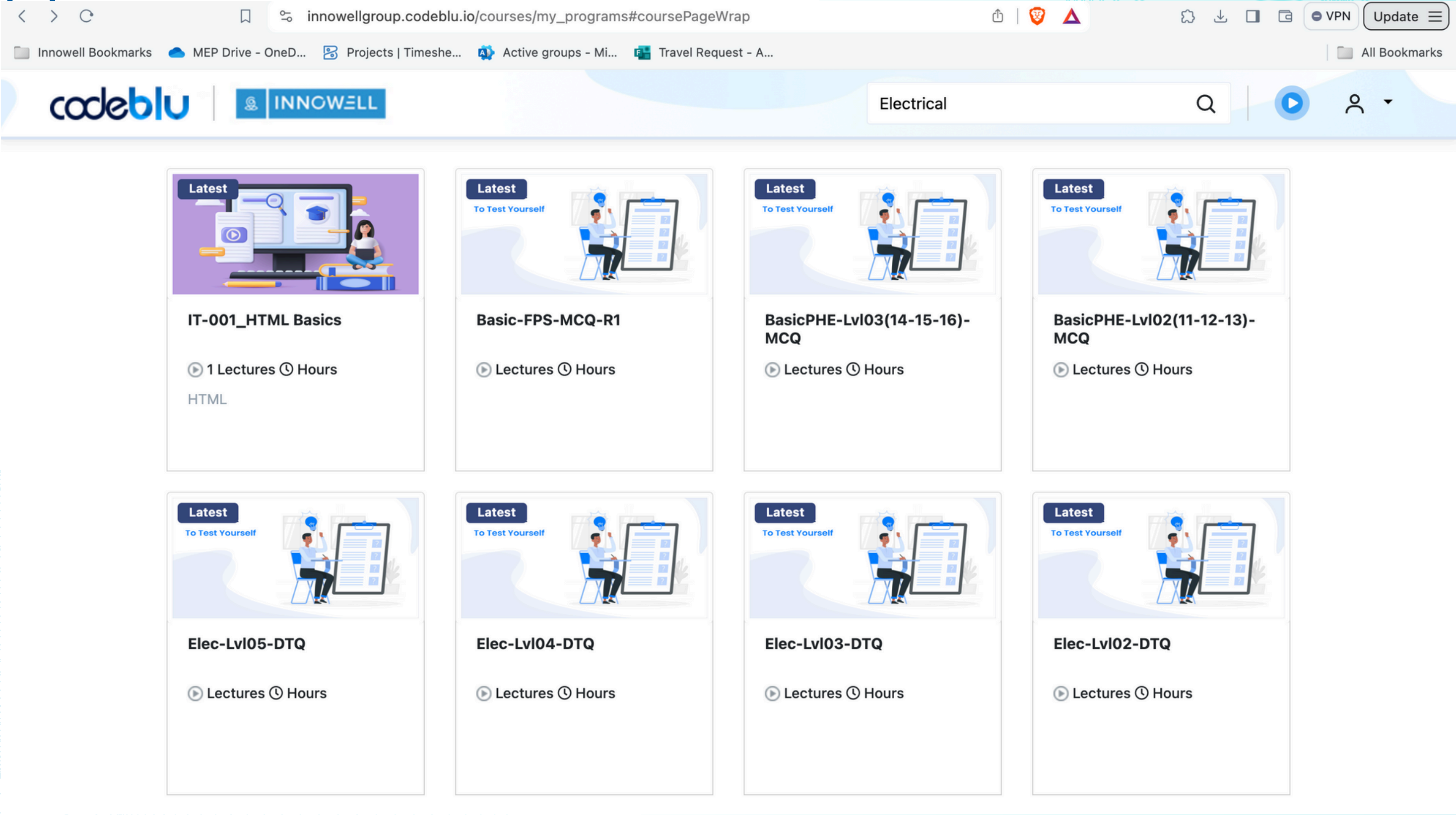
Unnamed Filter

Arial10B I U

NAME	Industry Type	NAME OF SERVICES	Deliverables	PROBLEM DESCRIPTION	LESSON LEARNT DESCRIPTION
120	Fit-out	CO-ORDINATION	Concept drawings	Initially, O/G room & Battery room space planning was given with getting partial confirmation from the Electrical team. Later, Electrical team gave proper space planning which affect the Workstation count and lab rack count.	Get space planning from the ind Consolidate and review the spar
121	Fit-out	CO-ORDINATION	GFC	During Co-ordination in the BIM to accommodate all the services in the given space without considering the support structure and the co-ordination is done. At the site, When we consider support for the service the height get varies.	While doing Co-ordination in the to be considered.
122	Fit-out	Access control	Tender drawings GFC	Raceway would be coming for Acees controller which is missed out in the Tender BOQ. Vendor have raised as NT item and it is taken from the Electrical BOQ and finalized in the variation.	Cable raceways to be included i
123	Fit-out	Aspiration Detection system	BOQ Tender drawings	For BMS Integration, Separate module to be considered for Aspiration detection system which would cost around 2.0L which brings major impact on the costing. On discussing with the OEM, We understood the requirement and included in the BOQ.	Modules to be considered for As system BMS integration.
124	Fit-out	ELV	Tender drawings	ACS & CCTV Cable tray input is not given to BIM team initially. After completion of co-ordination, the input is given. Because of that Project delivery from the BIM team got delayed.	While giving inputs to BIM team, information is given.
128	Fit-out	ELECTRICAL	BOQ Tender drawings GFC	We have not considered powder coated tray in open ceiling area.	We should provide the powder-e Open false ceiling area in Drawi considered-BOQ
129	Fit-out	ELECTRICAL	BOQ	In Noida project Rising main adopter box is not sufficient for cable termination.	We Should consider Tap-off box' description.
130	Fit-out	ELECTRICAL	BOQ DBR GFC	In CTS Ozone we have considered TP+2N as per CTS guidelines for UPS O/G panel, Later stage client suggest to us provide 4P breakers in UPS O/G panel feeders. Hence, the UPS O/G panels are coming under NT item.	For upcoming CTS projects we- Breakers in UPS O/G panel feet
131	Fit-out	ELECTRICAL	BOQ GFC	In CTS Ozone we considered TP+2N Manual change over in SLD	we shall consider either TP or 4I

Collation of Lessons Learnt and retaining Organizational assets

Key Approach



Online Learning Management System

Key Approach



ENTHIRAN

Project

Checkpoints: 51

Add Checkpoint

41. Check if the mechanical ventilation is provided for electrical room	<div><div>Y</div><div>N</div><div>n.a</div><div></div></div>	E.I Builder's Permission +1	<div><div></div><div></div><div></div><div></div></div>
42. Check if any drain pump is provided as an inbuilt part of DX/VRF/PAC indoor unit	<div><div></div><div>N</div><div>n.a</div><div></div></div>	E.I Basic Design issue	<div><div></div><div></div><div></div><div></div></div>
43. Check if the builder /Client has provided sufficient space for outdoor units in balcony / open terrace	<div><div>Y</div><div>N</div><div>n.a</div><div></div></div>	E.I Basic Design issue +1	<div><div></div><div></div><div></div><div></div></div>
44. Check if any additional drain pump with redundancy is provided as an inbuilt part of DX/VRF/PAC indoor unit	<div><div></div><div>N</div><div>n.a</div><div></div></div>	E.I Basic Design issue	<div><div></div><div></div><div></div><div></div></div>
45. Check if return air fans (EC fans with low noise level) are considered, incase of space constraints & inadequate return air path	<div><div></div><div>N</div><div>n.a</div><div></div></div>	E.I Basic Design issue	<div><div></div><div></div><div></div><div></div></div>
46. Check if Tuckshop area equipment load is considered as per Clients inputs, for heat load calculation.	<div><div></div><div>N</div><div>n.a</div><div></div></div>	E.I Basic Design issue	<div><div></div><div></div><div></div><div></div></div>
47. Check if critical room rack loads are considered as per client's requirement / design guidelines	<div><div></div><div>N</div><div>n.a</div><div></div></div>	E.I Basic Design issue	<div><div></div><div></div><div></div><div></div></div>
48. Check if hydrogen sensor is avoided for operation of Battery room Exhaust fan	<div><div>Y</div><div>N</div><div>n.a</div><div></div></div>	E.I Basic Design issue	<div><div></div><div></div><div></div><div></div></div>
49. Check if battery room exhaust fan panel starter panel is provided timer+relay provisions to run the fan at every 30 minutes interval.	<div><div>Y</div><div>N</div><div>n.a</div><div></div></div>	E.I Basic Design issue	<div><div></div><div></div><div></div><div></div></div>
50. Check if the supply airflow rate for lift lobby (incase builder has provided ducting & grilles) is added to tenant's total airflow rate requirement.	<div><div>Y</div><div>N</div><div>n.a</div><div></div></div>	E.I Basic Design issue	<div><div></div><div></div><div></div><div></div></div>

Online Quality Check platform

Doc type	Services	Doc Name	Actual Submission Date	Date of 1st review by Innowell	Status of 1st Review
Technical submittal	HVAC	Aluminum Linear 2, 3 & 4 Slot Diffuser	12/05/18	12/07/18	Approve
Technical submittal	HVAC	Aluminum Circular Type Diffuser	12/05/18		
Technical submittal	HVAC	Aluminum Supply & Return Air Diffuser	12/05/18		
Technical submittal	HVAC	Aluminum Horizontal Bar Grille	12/05/18		
Technical submittal	HVAC	Aluminum Circular Exhaust Duct Valve	12/05/18	12/07/18	Approve
Technical submittal	HVAC	Closed Cell Nitrile Rubber Thermal Insulation	12/05/18	12/07/18	Approve
Technical submittal	HVAC	Open Cell Nitrile Rubber Acoustic Insulation	12/05/18		
Technical submittal	HVAC	CPVC Drain Pipe	12/05/18	12/07/18	Revise
Technical submittal	HVAC	Drain Pump	12/05/18	12/07/18	Approve
Shop drawings	HVAC	Second Floor HVAC Shop Drawing	12/05/18	12/06/18	Approve
Shop drawings	HVAC	Ground Floor HVAC Shop Drawing	12/05/18		Approve
Shop drawings	Electrical	07GA_POU Panel-GF (W-6)-R2	12/31/18	01/02/19	Approve
Shop drawings	Electrical	10GA_HVAC Panel-BF-R2	12/31/18	01/02/19	
Shop drawings	Electrical	11GA_HVAC Panel-TF (outdoor)-R2	12/31/18	01/02/19	
Shop drawings	Electrical	12GA_SMSB PANEL-1F2-R2			

Empowering at Cloud Intuitive Collaborate'r

Cloud based “Intuitive Collaborate'r” ensures live engagement of all Project Stakeholder and empowers seamless delivery of Designs and Documents.

Print Options

☐ Include Hidden Columns

☒ Include Comments

Actual Date of 3rd Submission

Date of 3rd review by Innowell

Status of 3rd Review

Date of Final approval by Innowell

Remarks

LOI Ref

PO Ref

Comments

[lokesh@innowellgroup.com](#) | December 7, 2018 7:48 PM
Status:
Revise and resubmit.
1. Submitted make is not as per Approved list of make.

[santhoshrao@vayucon.in](#) | December 13, 2018 1:23 PM
Prince Make is a part of tender makes

Key Approach

EFFECTIVE PROJECT CONTROL PLAN

INNOWELL

Arth

FileAutomationFormsConnections

Wework Galaxy - Design Schedule - Arth

Share

Grid ViewFilter

Arial10B I U

	Quick Status	Task Name	Duration	Start Date	End Date	Predecesso...	Actual Start	Actual End
31		Hands off - Second stage	6d	03/04/24	03/11/24			
32		Clients input	4d	03/04/24	03/07/24			
33		100% of Approved interior layout in model	1d	03/07/24	03/07/24			
34		Submission of ICT drawings	2d	03/04/24	03/05/24			
35		1st floor ICT drawing	1d	03/04/24	03/04/24			
36		2nd floor ICT drawing	1d	03/05/24	03/05/24			
37		Submission of EC Model drawings including's (Beam,Capital & Services drawings)	1d	03/07/24	03/07/24			
38		Pantry & Chai bar appliance data base	1d	03/07/24	03/07/24			
39		Architect input	2d	03/08/24	03/11/24			
40		Finished floor plan	2d	03/08/24	03/11/24	32		
41		Grommet layout	2d	03/08/24	03/11/24	32		
42		Lighting layout (including wattage of light)	2d	03/08/24	03/11/24	32		
43		Due Diligence Stage	7d	02/29/24	03/07/24			
44		Submission of Fire Compartmentation layout	1d	02/29/24	02/29/24		02/29/24	
45		Submission of Staircase adequacy calculations	1d	02/29/24	02/29/24		02/29/24	
46		Submission of PHE fixture adequacy calculations	1d	02/29/24	02/29/24		02/29/24	
47		Due Diligence Site Visit MEP	1d	03/05/24	03/05/24			
48		Due Diligence Report Submission (MEP)	2d	03/06/24	03/07/24	47		
49		Critical set	22d	02/28/24	03/26/24			
50		Electrical Deliverables	21d	02/28/24	03/25/24			
51		DBR	11d	02/28/24	03/12/24			
52		Preparation	6d	02/28/24	03/05/24			

Online Design Scheduler



Apollo Tyres Global R&D, Chennai
(MEP and IGBC)



Salcomp, Chennai
(7,00,000 Sq.ft, MEP + BIM, Cleanrooms)



Zoho Tenkasi
(2.0 lacs sq.ft.)



HPE, Chennai
(1.8 Lacs sq.ft, MEP + BIM)



TPI Composites, Chennai
(5,00,000 sqft, HVAC + BMS)



Mondelez International, Sricity, Tada,
(60,000 sq.ft, MEP + BIM)



STTG Data Centre, Chennai & Pune



Dell Campus, Hyderabad
(5.0 Lacs sq.ft, MEP + IGBC + WELL)



Ralson Tyres, Indore
(8,00,000 sq.ft, HVAC, BMS, Fire)



ESR Warehouses (for Amazon & Reliance)
(1.4 mil sq.ft, MEP + BIM)



DELL Crystal Down, Bengaluru
(2.5 lacs sq.ft, MEP + BIM + IGBC)



Sunriver, EGL Bengaluru
(3,0 lacs sq.ft MEP Refurbishment)

A photograph of modern skyscrapers at dusk, with a semi-transparent dark blue overlay in the center. The buildings have glass facades reflecting the sky. The title 'Building Information Modelling' is centered in white text. There are yellow and orange decorative bars on the left and right sides of the image.

Building Information Modelling



BIM Services

BIM TRANSFORMATION / CONSULTANCY

ARCHITECTURE MODELLING, DRAFTING & DETAILING LOD 100-400

STRUCTURE MODELLING, DRAFTING & DETAILING LOD 100-400

INTERIOR DESIGN SERVICE MODELLING, DRAFTING & DETAILING LOD 100-400

MODEL BASED QUANTITY / MATERIAL TAKE-OFF

CAD / PDF TO BIM CONVERSION

SCAN TO BIM (POINT CLOUD MODELLING SERVICES)

ARCHITECTURE - AS-BUILD AS PER SITE UPDATE

BIM CONTENT (REVIT FAMILY) CREATION

CONCEPT MODELLING + WALK THROUGH VIDEO CREATION

INTERIOR / EXTERIOR MODELLING & RENDERING

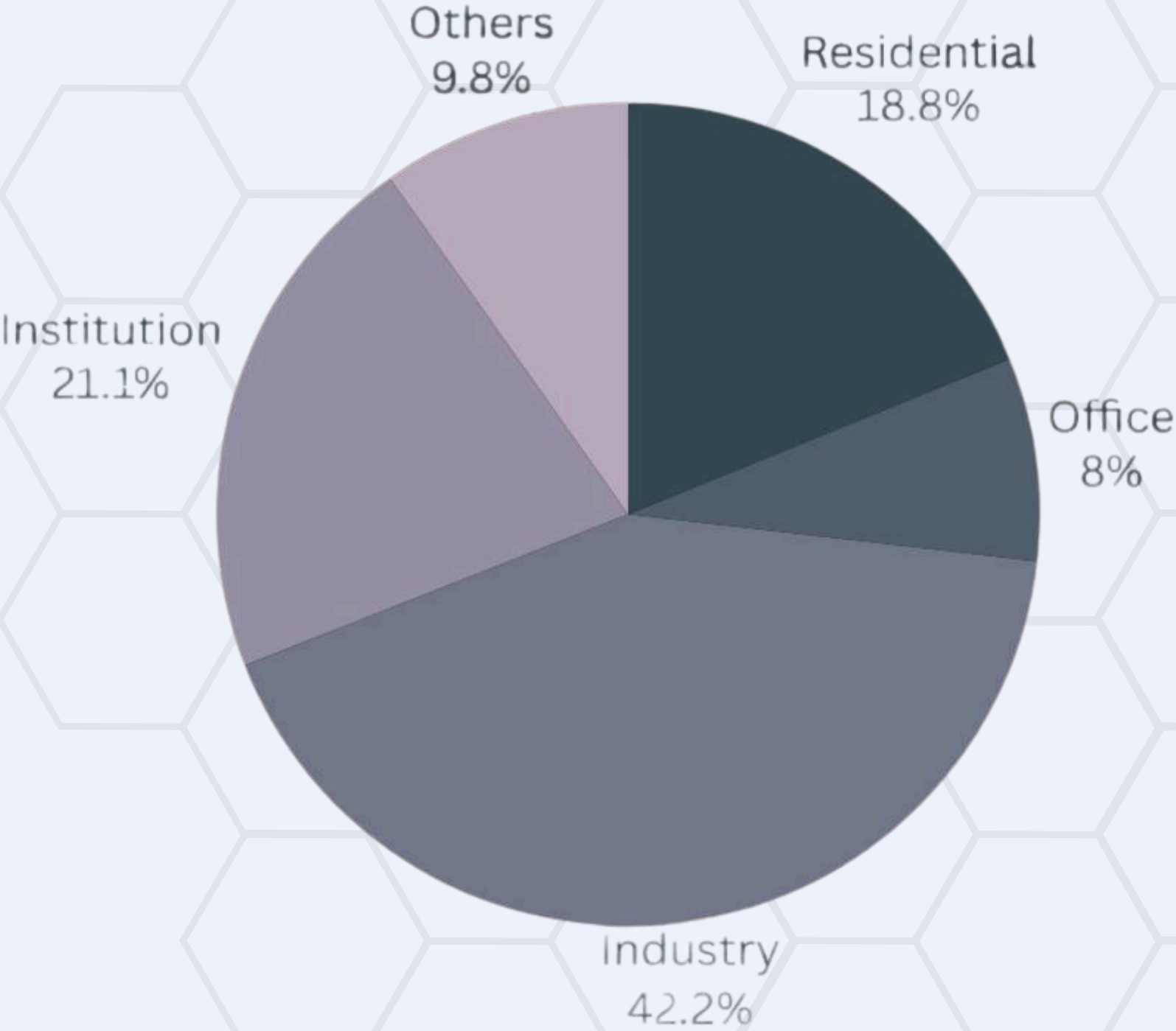
VR (VIRTUAL REALITY) EMBEDDED BIM MODEL VISUALIZATION

ON-SITE / OFFSITE BIM STAFFING SERVICE

BIM TRAINING

Project Accomplishment

Project Size
in Mn SFT





DELL Crystal Down

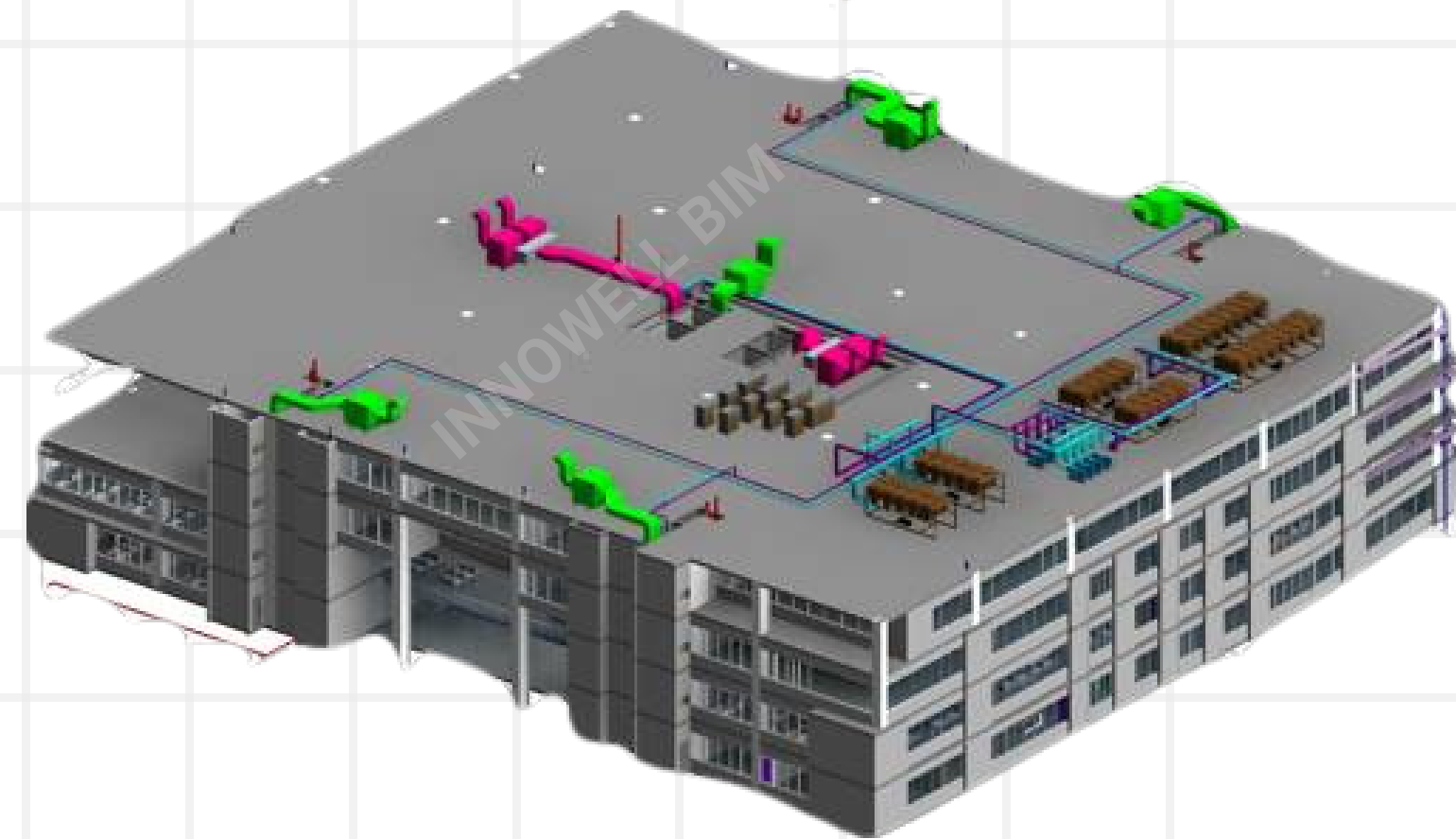
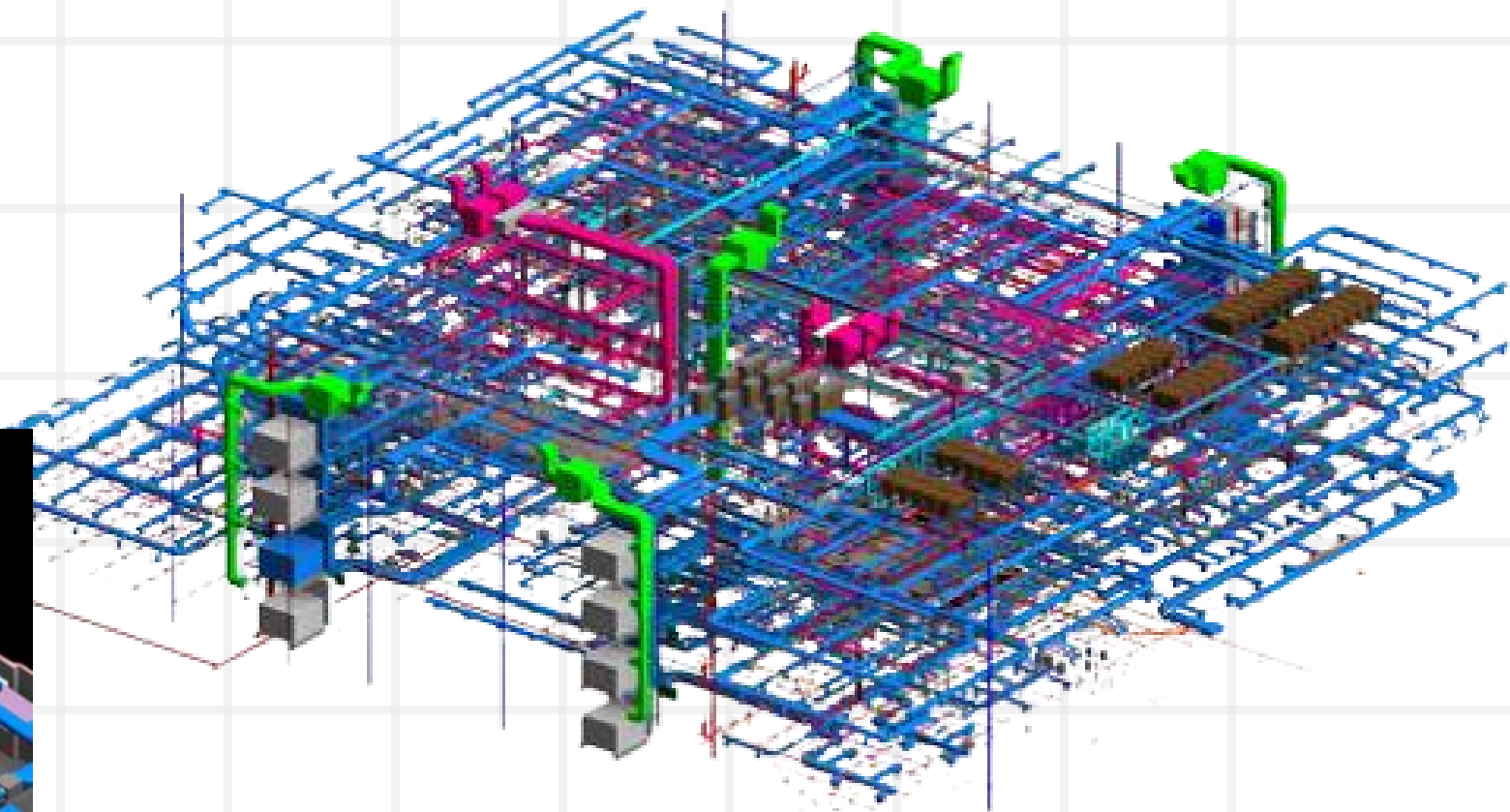
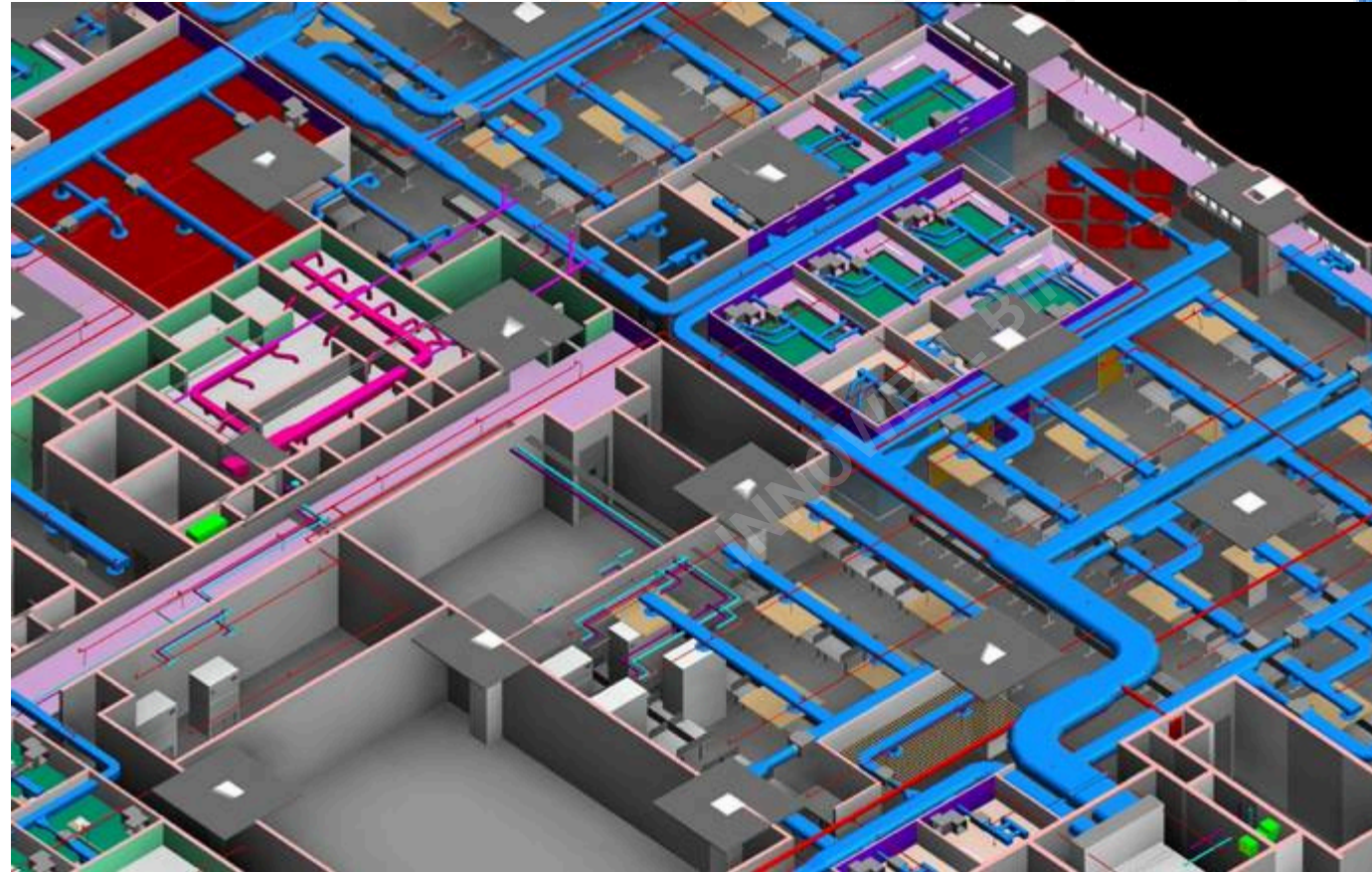
Bangalore, Karnataka

Project Type:
Office Building

Scope of work:

BIM + Engineering

Size: 200,000 SFT



MEP Coordination

East Co Development

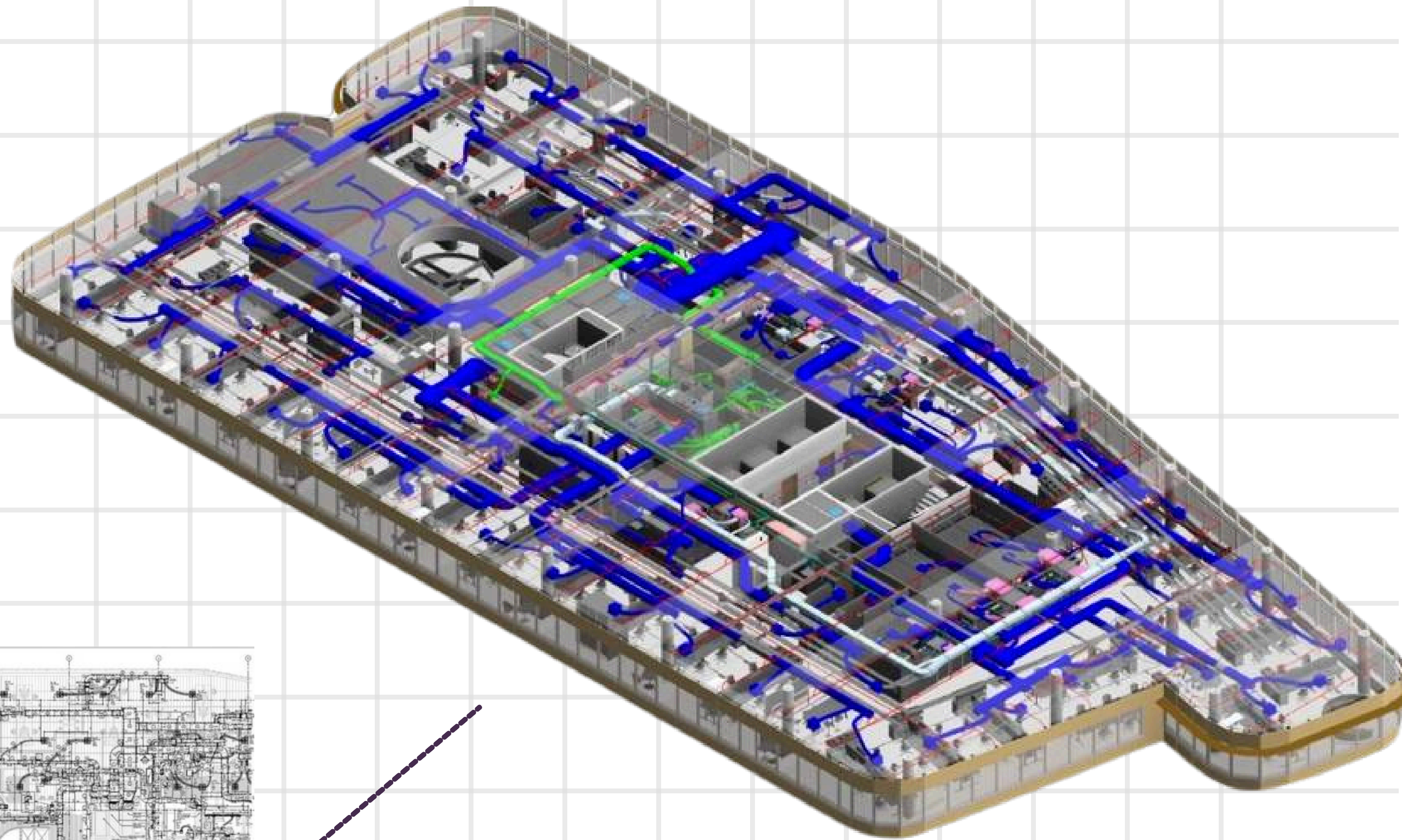
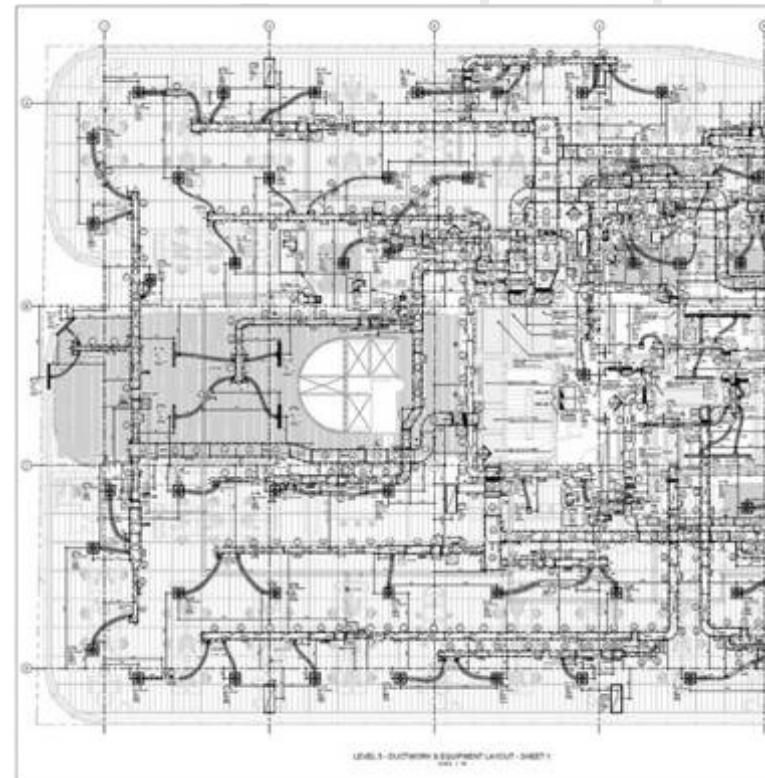
Australia

Size: 500,000 SFT

Project Type:
Office Building

Scope of work:

DUCT WORK-LOD400
(FABRICATION)



Duct work sample



HP Enterprise

India

Project Type:
Office Building

Scope of work:

MEP Design,
Model Coordination
& Quantification

Size: 170,000 SFT



Arch Model - LOD - 200



HP Enterprise

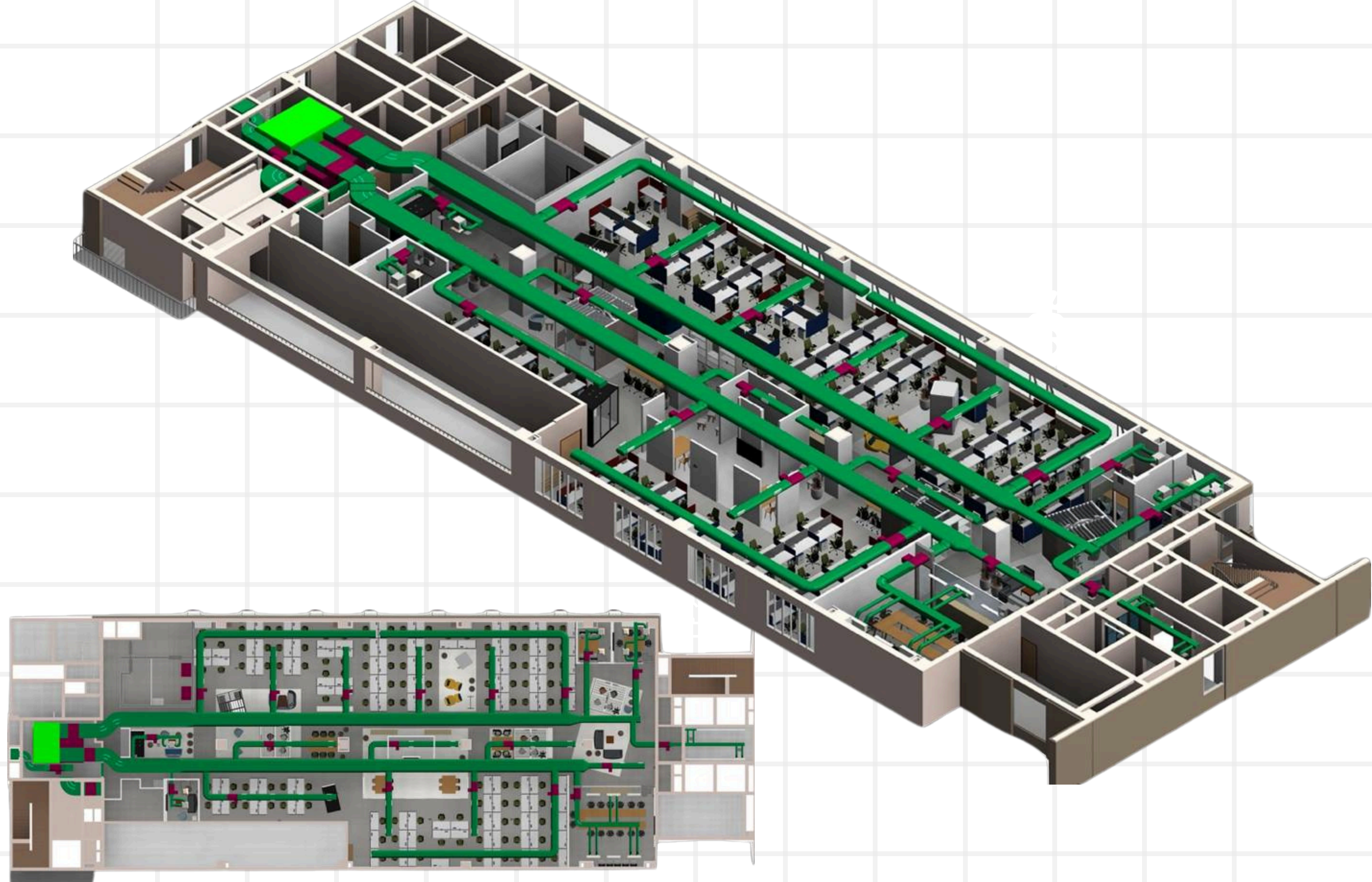
India

Project Type:
Office Building

Scope of work:

MEP Design,
Model Coordination
& Quantification

Size: 170,000 SFT



MEP Model - LOD - 300

wework

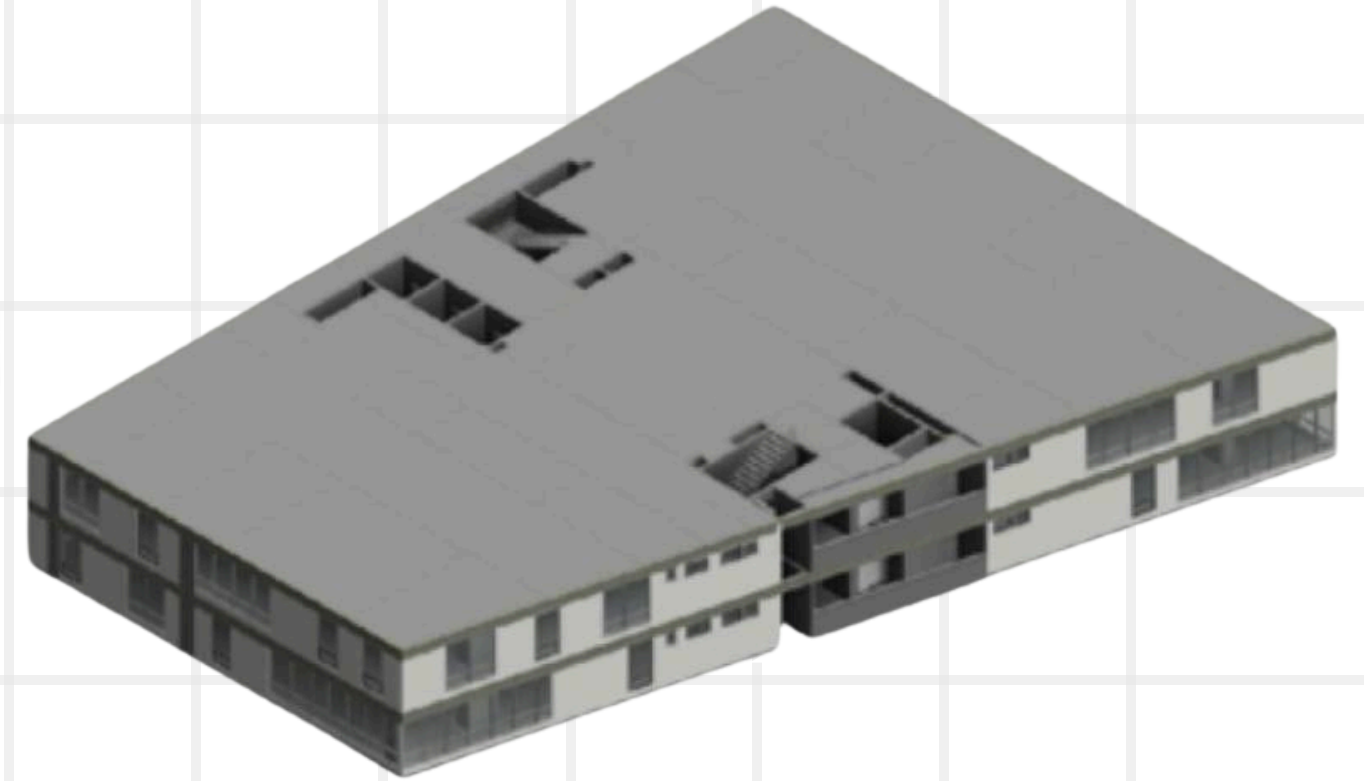
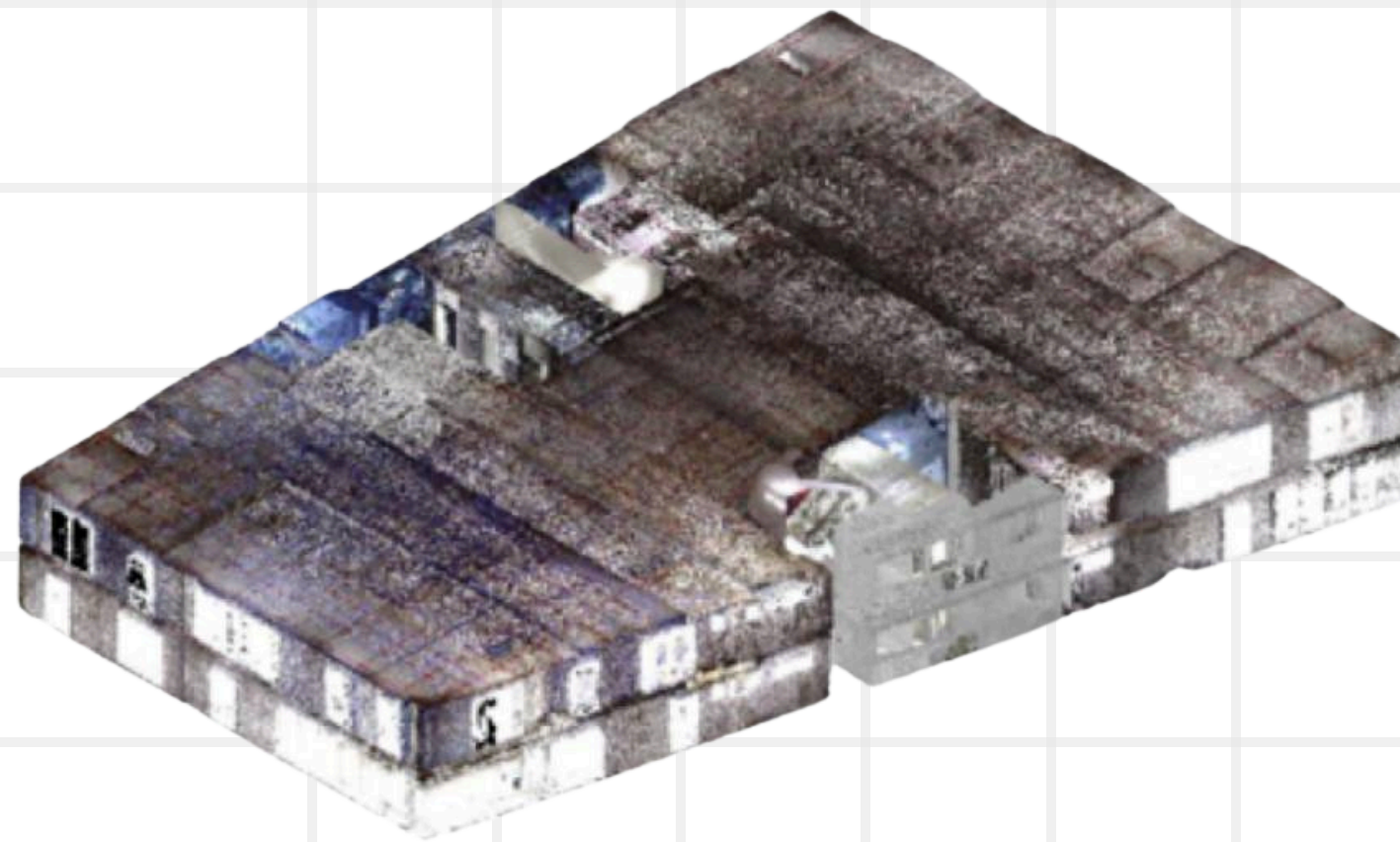
India

Project Type:
Office Building

Scope of work:

Scan2BIM

10 Projects



wework

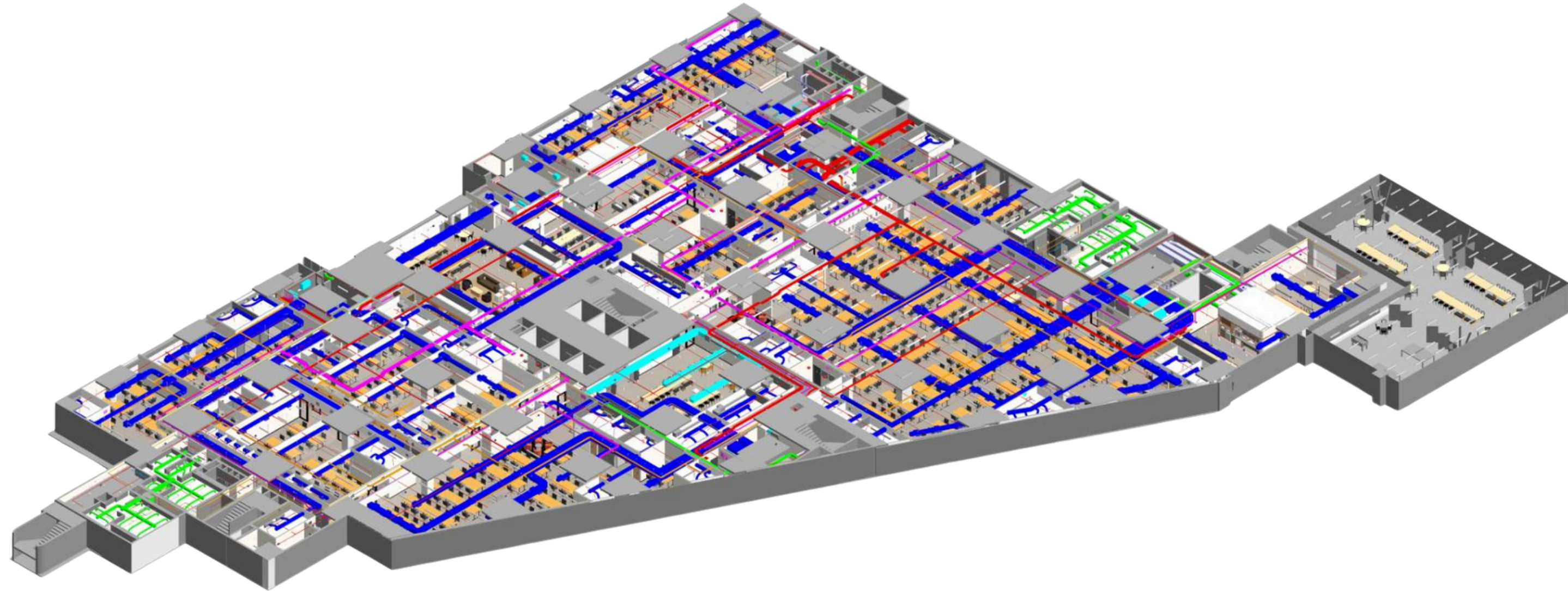
India

Project Type:
Office Building

Scope of work:

MEP Design
BIM for MEP
LOD 350

4 Projects





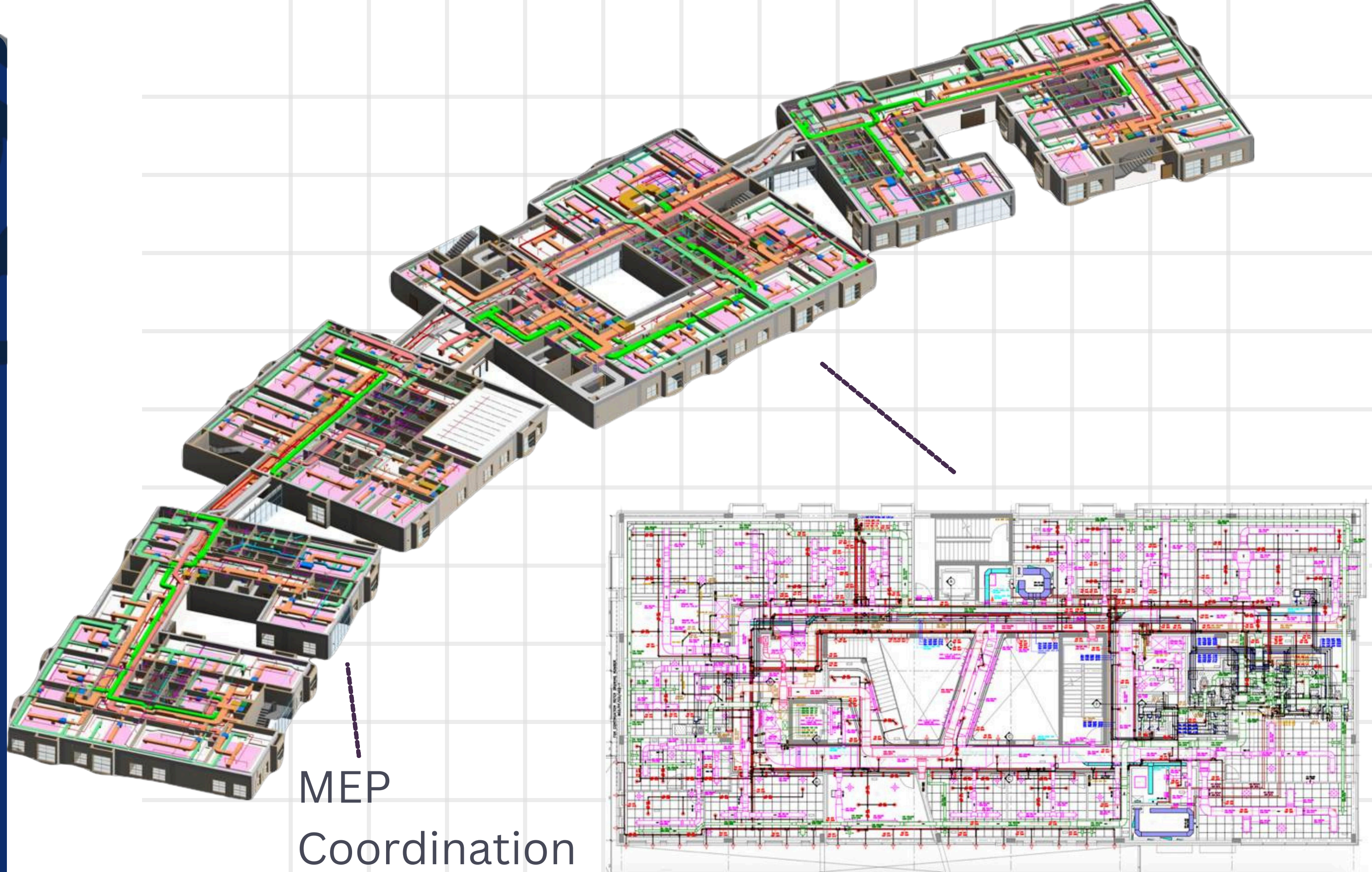
Al-Wafa School
Sharjah, UAE

Size: 900,000 SFT

Project Type:
Educational Building

Scope of work:

MEP Model Coordination &
Quantification



MEP
Coordination
Work



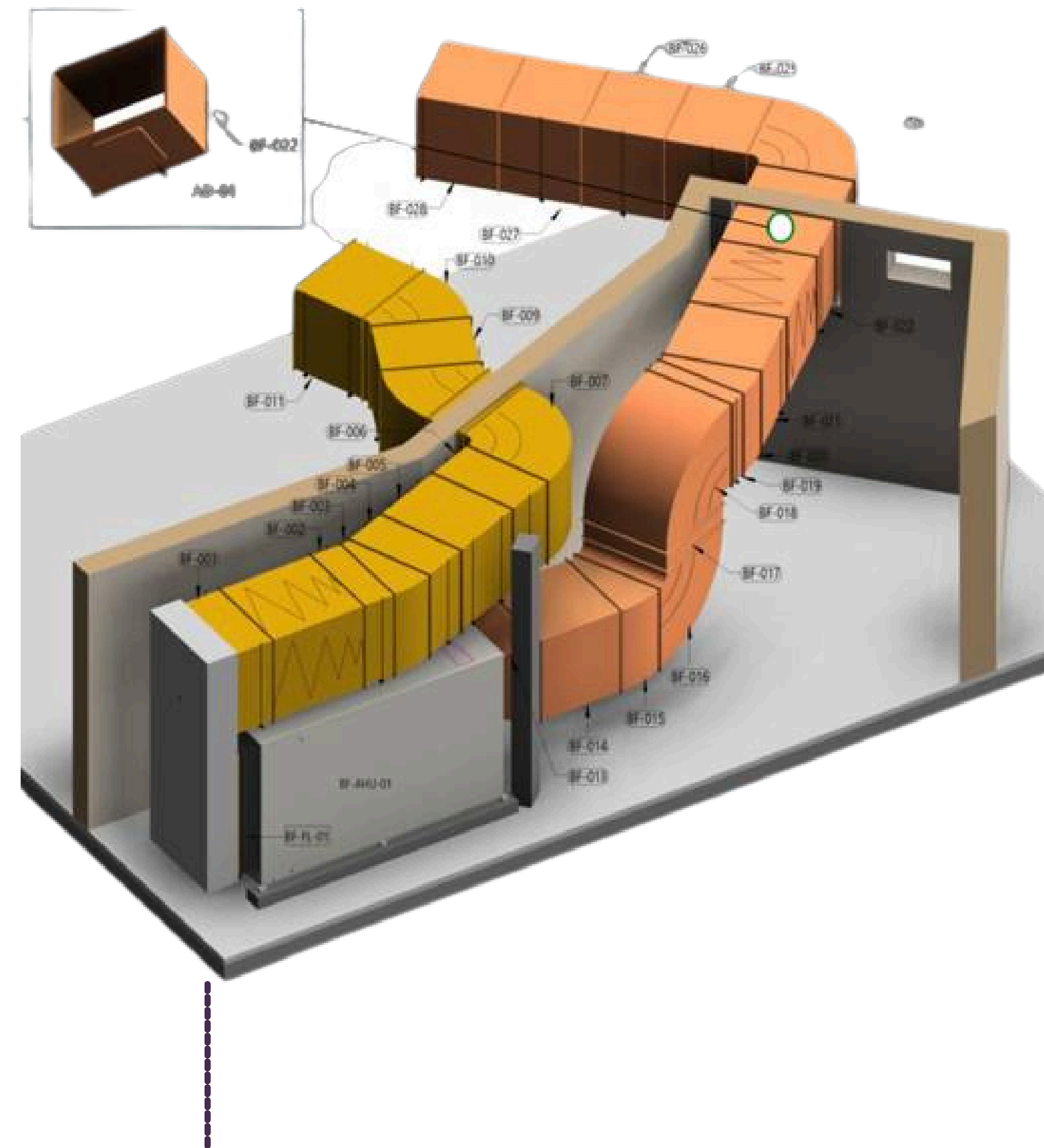
Al-Wafa School Sharjah, UAE

Size: 900,000 SFT

Project Type:
Educational Building

Scope of work:

MEP Model Coordination &
Quantification



Duct work model

Salcomp

Salcomp -
Mobile Assembly /
Manufacturing Plan

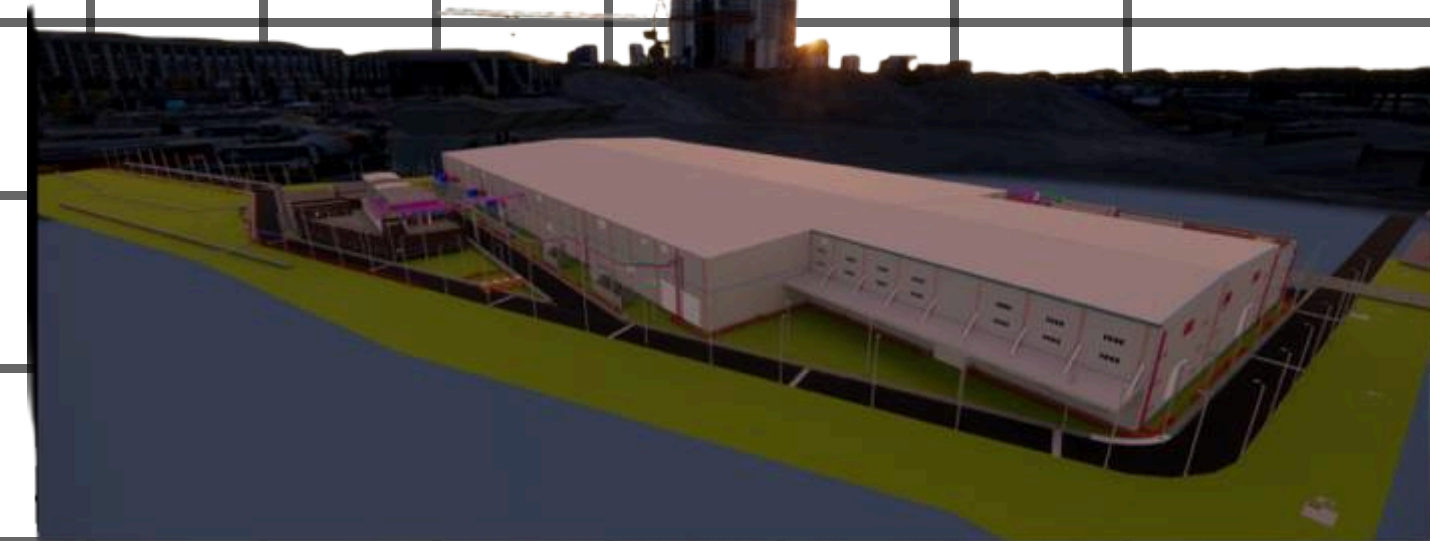
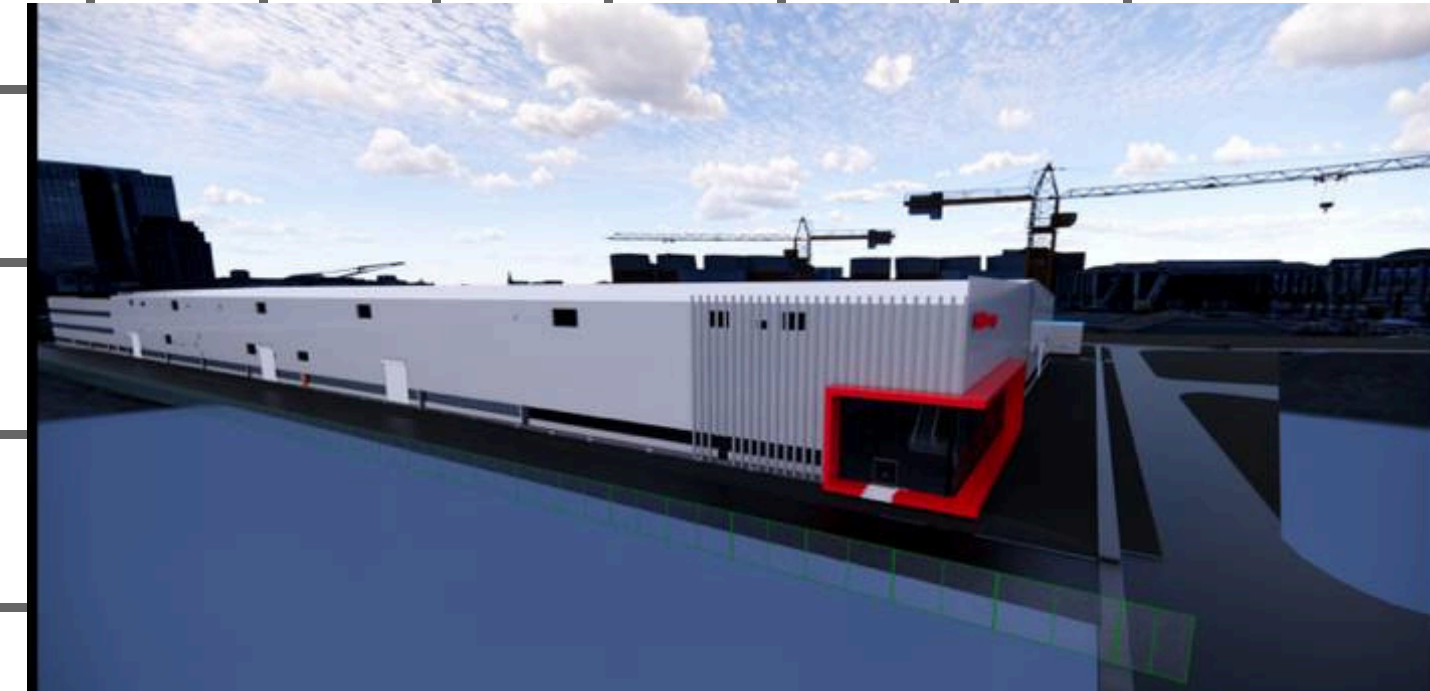
Chennai, India

Size: 700,000 SFT

Project Type:
Industry

Scope of work:

PEB Modelling + Civil Drawing
Extraction + MEP Modelling



UHD Rendered Images

Sustainability



Innowell received LEED Proven Provider recognition from GBCI
for continuously delivering excellent and efficient Sustainable Design Practices



PROVEN
PROVIDER™

Project Abstract



LEED

Number of Projects	: 169
Certified Projects	: 121
Ongoing Projects	: 48



IGBC

Number of Projects	: 8
Certified Projects	: 4
Ongoing Projects	: 4



GRIHA

Number of Projects	: 13
Certified Projects	: 5
Ongoing Projects	: 8



WELL

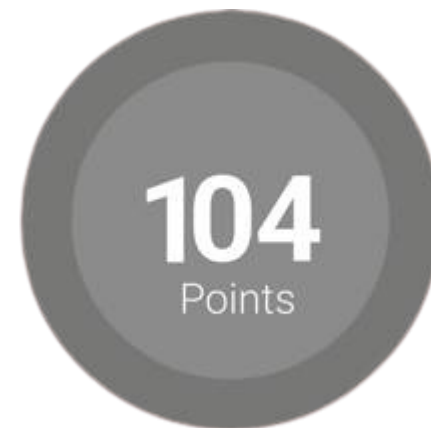
Number of Projects	: 6
Certified Projects	: 3
Ongoing Projects	: 3



GREEN TEXTILE LTD

Kadda Bazar, Gazipur Sadar,
Bangladesh.

Project size: 75,000 sq ft



The world's highest scored factory
under LEED v4 as of now: 2023



COGNIZANT ILP 2

Coimbatore, Tamilnadu,
India

Project Size: 173,480 sq ft



➤ Points Achieved

74/110

➤ Certified on

March, 2022

➤ Version

LEED v4

➤ Category

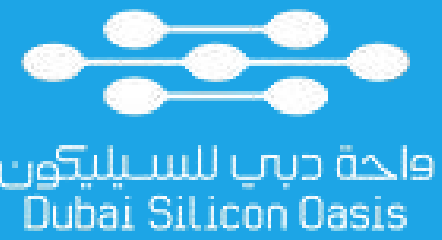
ID+C: Commercial Interiors



Energy Improvement



Water Efficiency



DUBAI SILICON OASIS AUTHORITY HIGH BAY BUILDING

49MQ+466 - Dubai Silicon Oasis - Industrial Area
- Dubai - United Arab Emirates



The first LEED v4.1 O+M factory to achieve LEED Earth in UAE.



CTRLS DATACENTER AT PIONEER TOWERS

[HITEC City, Hyderabad, India.](#)

Project size: 160,230 sq ft



The first LEED v4 O+M Platinum certified Datacenter in the world



REMI HOLDINGS LIMITED

[Narayankanj, Gazipur, Bangladesh.](#)

Project size: 245,947 sq ft



97

Points



World's highest scored RMG Factory



GREATWEST GLOBAL BUSINESS

Deevaraabeesanahalli village, Varthur Hobl,
Bengaluru

Project size: 1,13,596 sq ft



81

Points



Our Prestigious Clients in India



Our Prestigious Clients in Abroad



سلطة واحة دبي للسيليكون
Dubai Silicon Oasis Authority



Innowell Engineering International Pvt Ltd



www.innowellgroup.com

SIVAKASI

2/44, 2/45 Maraneri,
Sivakasi,
Virudhunagar – 626124,
Tamil Nadu, India.

✉ info@innowellgroup.com
☎ +91 91509 12319

CHENNAI

269/3B, 1st & 2nd Floor,
First Cross Street , Vimalraj
Salai , Netaji Nagar,
Alapakkam main Road ,
Maduravayal, Chennai,
Tamil Nadu-600095

✉ info@innowellgroup.com
☎ +91 98846 59976

BANGALORE

319 First floor, Third Cross,
NGEF Layout Kasturi Nagar,
Ramamurthy Nagar,
Bengaluru-560016,
Karnataka, India

✉ sengathir@innowellgroup.com
☎ +91 95000 56868

HYDERABAD

Plot no - 111,
KPHB Colony,
Behind Nexus Mall,
Hyderabad,
Telangana-500072.

✉ syed@innowellgroup.com
☎ +91 62815 97156

For detailed information, contact concerned account manager.



<https://www.linkedin.com/company/innowell-engineering-international-pvt-ltd/>