

INNOWELL ENGINEERING INTERNATIONAL PVT LTD

• BENGALURU • CHENNAI • SIVAKASI • HYDERABAD • DHAKA



INNOWELL

An ISO 9001: 2015, 14001:2015, 27001:2022, and 50001:2018 Certified Company

Warehouse Works Profile

Inspired by Commitment. Powered by Passion.

OUR VISION

Innowell aspires to be a global leader for innovative solutions to its customers through passionate professionals

Core Values:

Integrity | Customer Excellence | People |
Learning | Innovative

MISSION



Develop

Nurture young talents



Empower

Empower talents with innovative process and standards



Care

Provide Challenging and joyful working Environment



Serve

Continuously explore client's needs and serve better



22
Members



44
Members



200+
Members

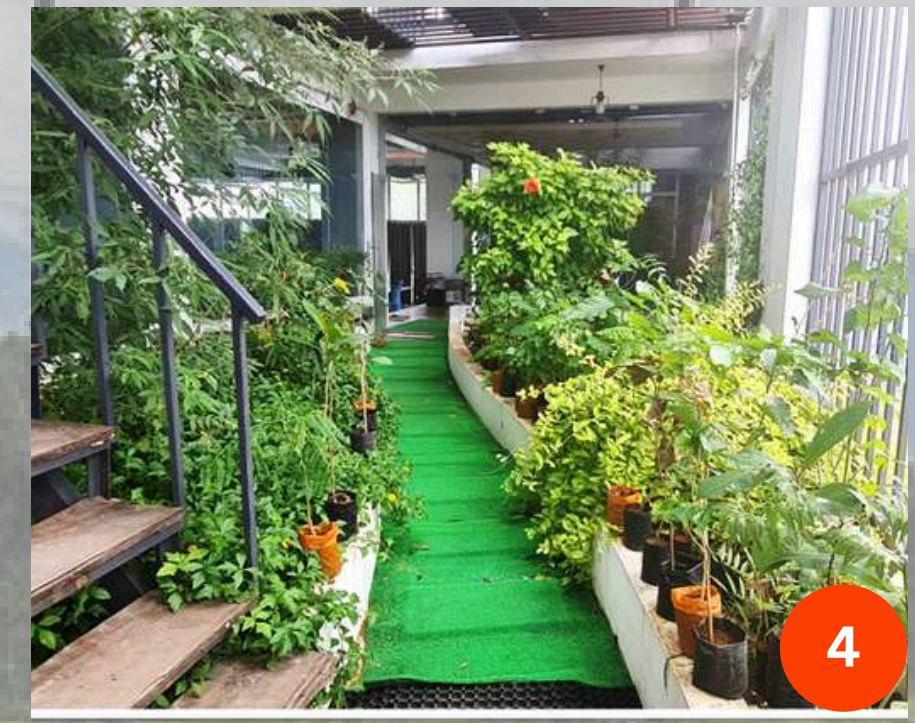
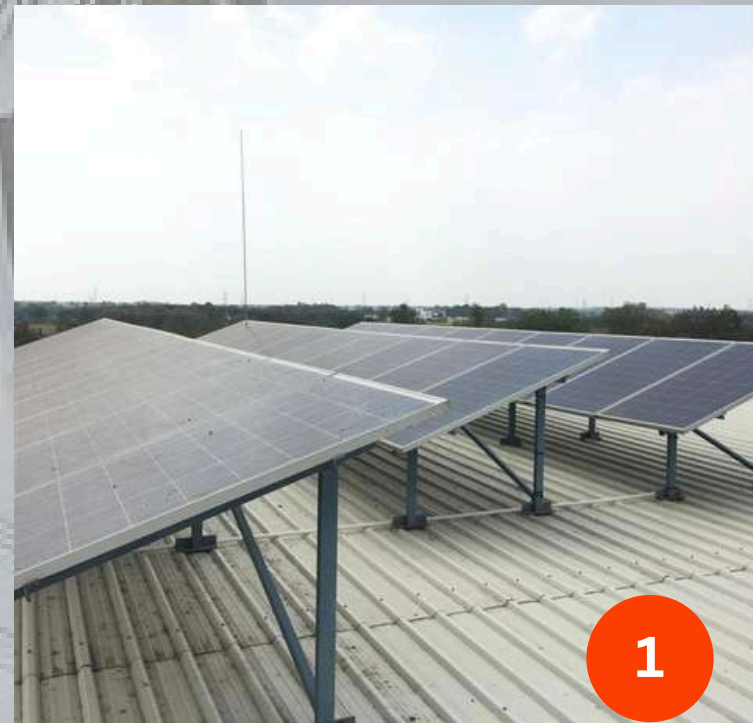
Innowell received LEED Proven Provider recognition from GBCI for continuously delivering excellent and efficient Sustainable Design Practices



Our Village office

in Maraneri, Sivakasi,
Tamilnadu, India

- 300% Efficient HVAC
- 200% Solar-Powered
- 100% Day-lighted
- 100% Views
- 55% Water Reuse
- 30% Roof Garden
- 39% Material Reuse

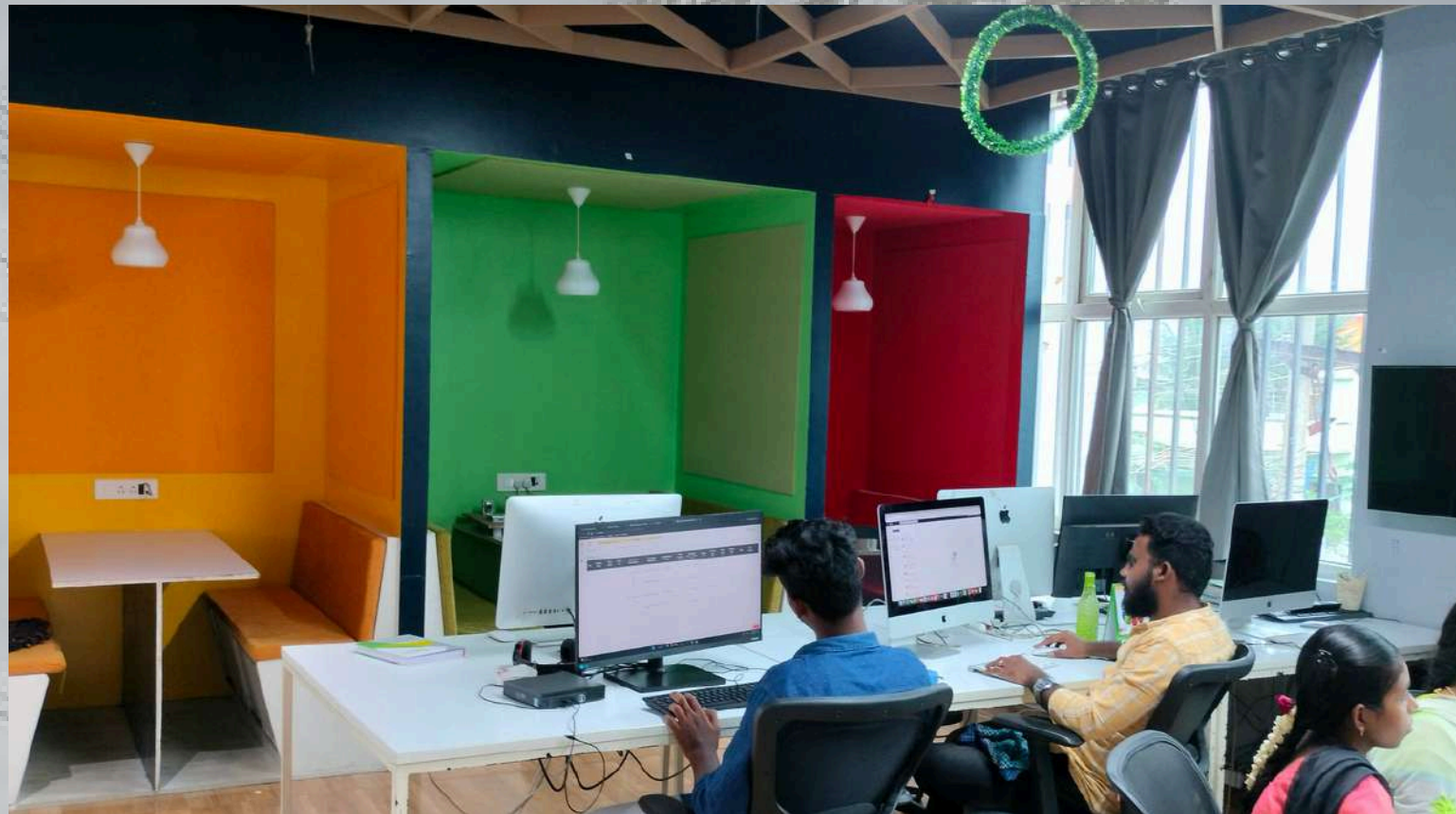


1. Solar Panel

2. Reused materials, proper lighting,
ergonomic workstation.

3. Daylight design, hydration plants, aesthetic wall arts

4. Nature incorporated roof garden



Acoustical Quiet Zone



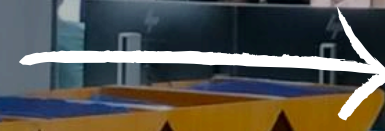
Aesthetic Stair



Evaporative Cooling System



Stage for Celebration



Recycled wood furniture

Certified on



**Achieved certification under the ISO 9001:2015, 14001:2015,
27001:2022, 45001:2018, 50001:2018 standard for
Integrated Quality Management**

For our dedication to the
**Planet, People, and
Environment**



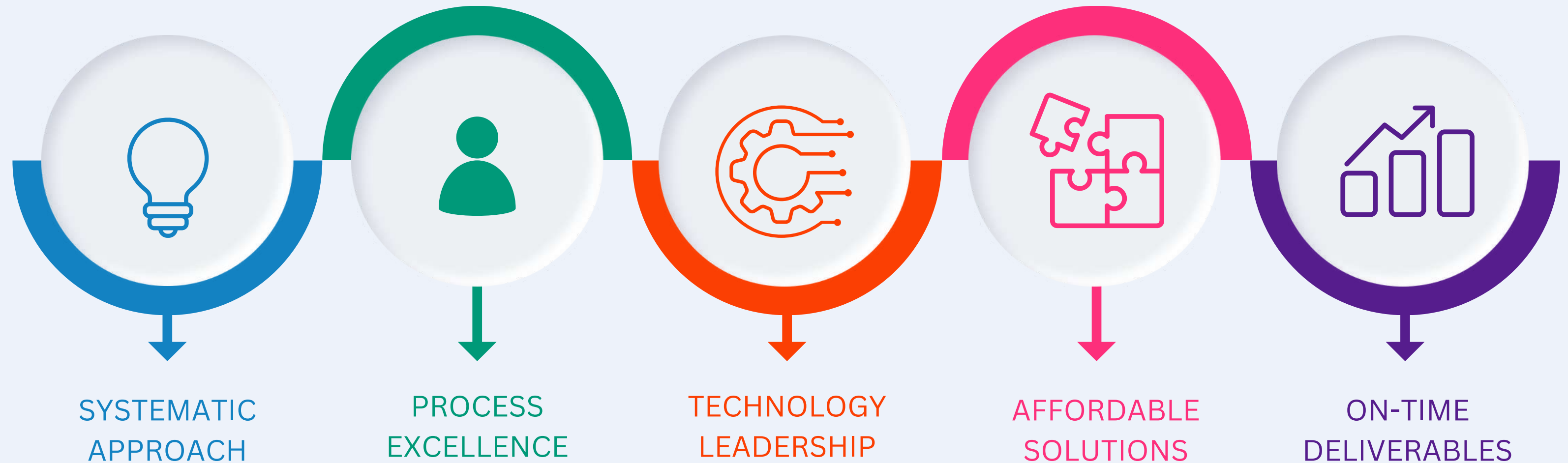
INNOWELL

THE WORLD'S HIGHEST LEED CERTIFIED

under v4.1 EB O&M Category



Why Innowell



What we do



MEP

- HVAC
- Electrical
- Plumbing & Utility Design
- Fire Protection System



BIM

- BIM – MEP & Industrial Piping
- BIM – C&ID
- BIM – Consultancy



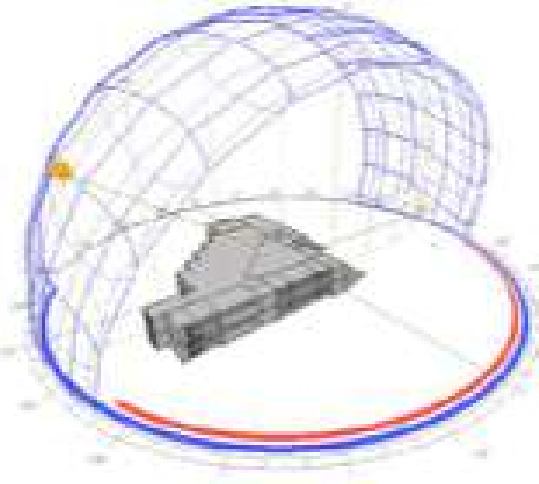
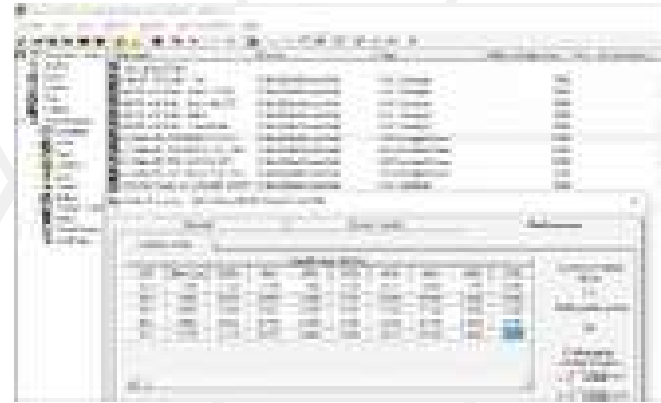
Sustainability

- LEED
- IGBC
- GRIHA
- WELL
- Carbon Reduction Programme
- Energy Audit

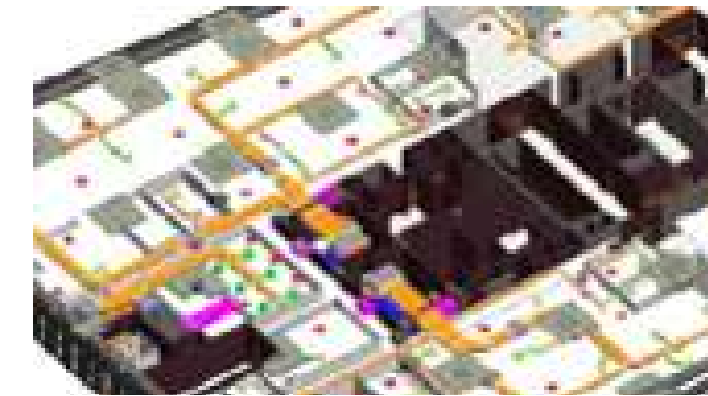
How we do



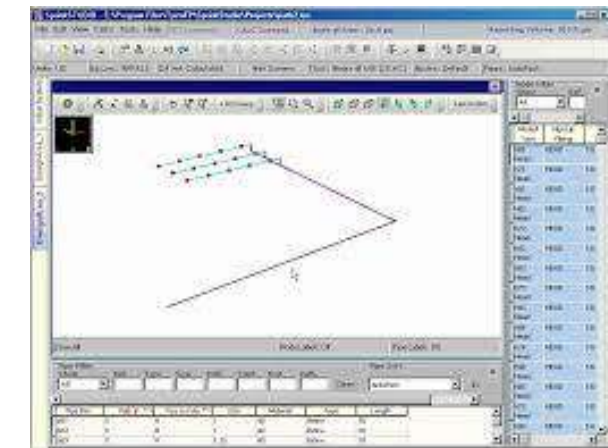
Our design evolved to **3D BIM** for precise coordination on services.



Ever wondered a virtual experience of the project. we do **CFD**.



Our detailed **energy analysis** decides the most suitable system for our clients.



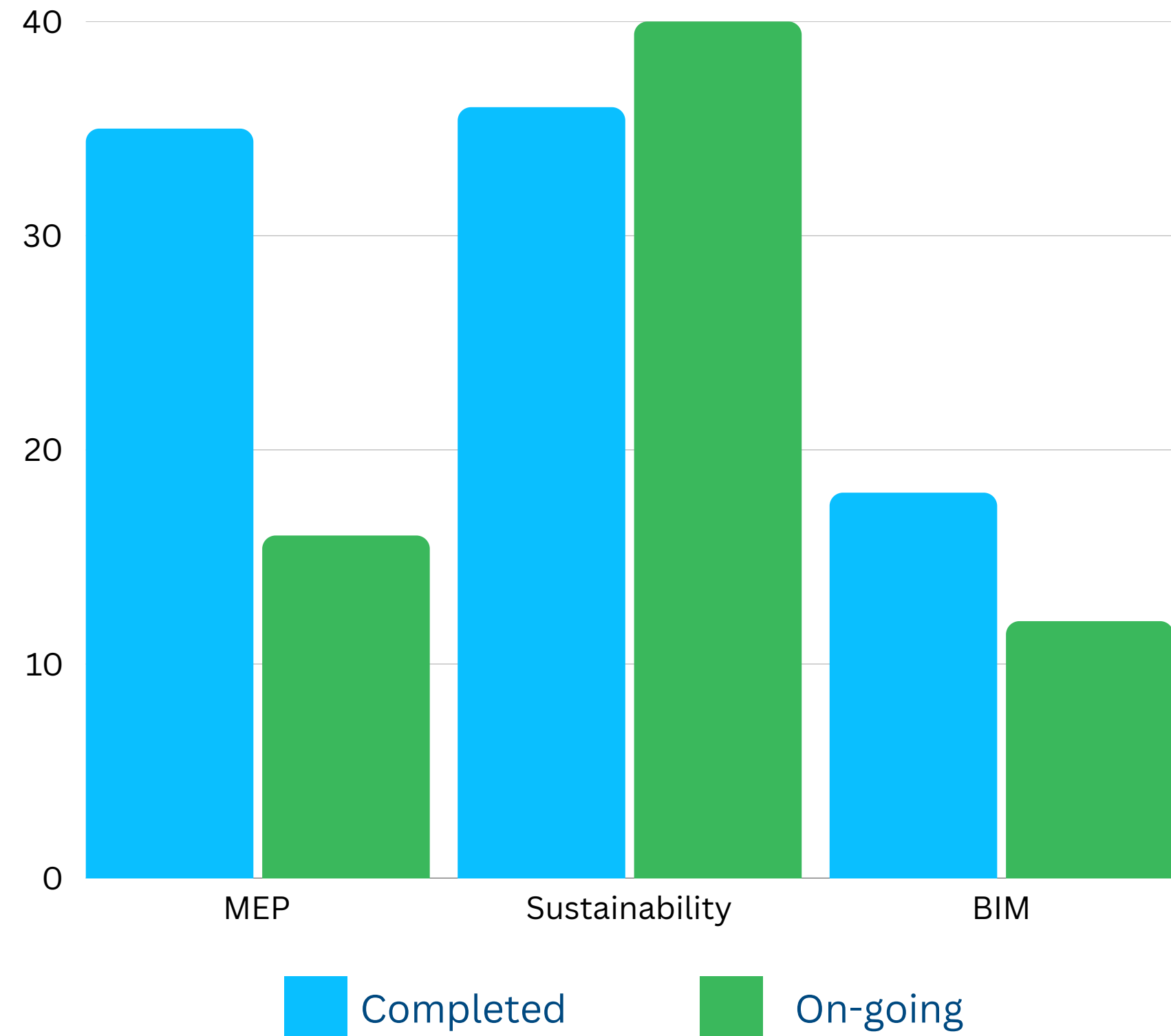


Our Market Segments

- Commercial Buildings
- Office Fit-outs
- Data centres and Labs
- Hospitals
- Industries
 - Electronic Industries
 - Tyre Factories
 - Bottling Factories
 - Chocolate Factories
 - Textile and Garment Factories
- Clean room Applications

Project Accomplishment

Project Size
in Mn SFT



Leadership Profile



Gunasekaran

Director

LEED AP, WELL AP, WELL PTA



Sengathir Selvan

Director

Certified Data Centre Specialist
Certified Cleanroom professional



Sankareswari

Director



Samuel

Associate Director



Regobert

Associate Director

IGBC AP



Pandidurai

Manager,
BIM

IGBC AP



Thalaiselvam

Manager,
Corporate Sustainability

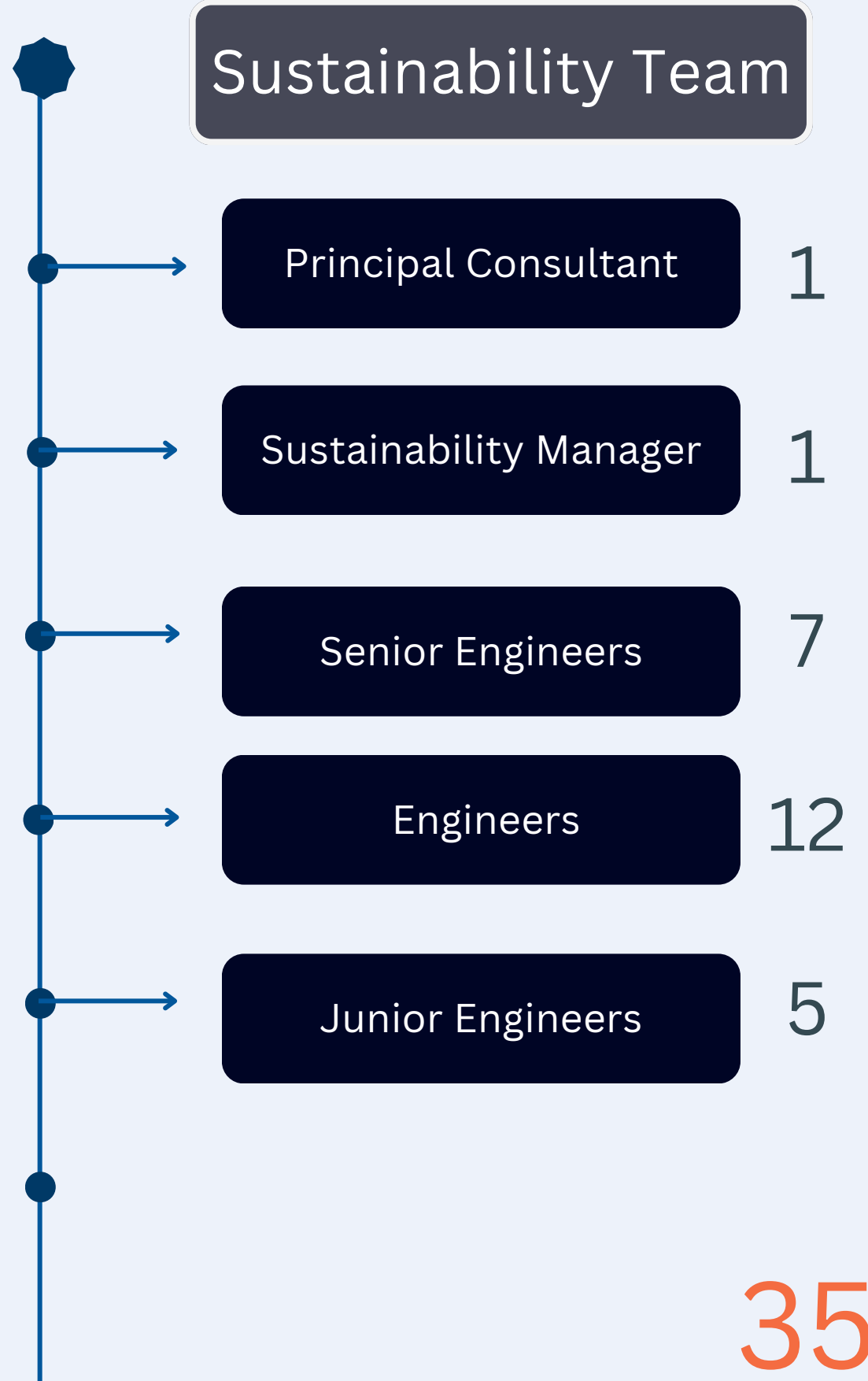
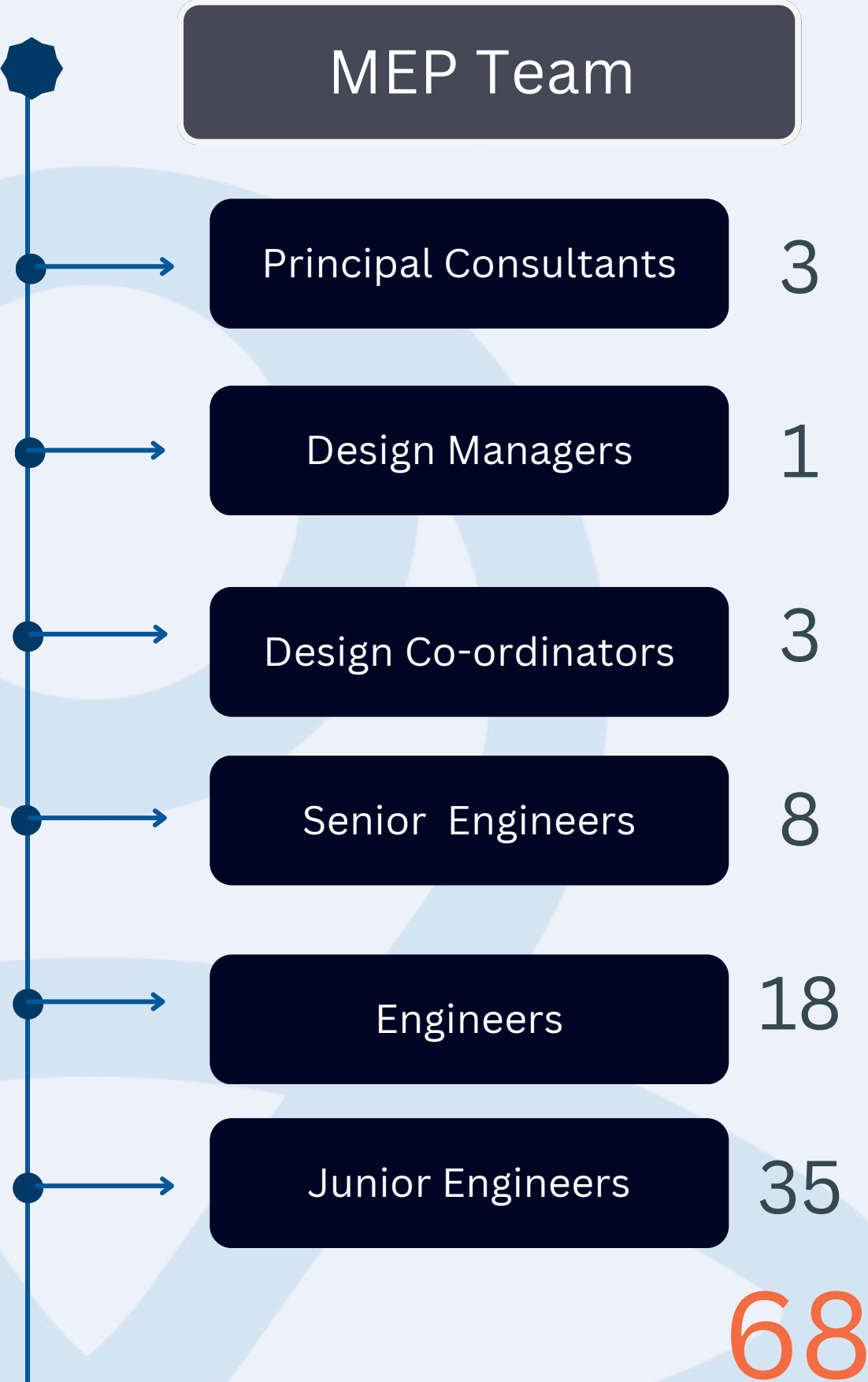
LEED AP, WELL AP,
IGBC AP, EDGE Expert,
TRUE Advisor,
GRIHA CP, LCA Specialist



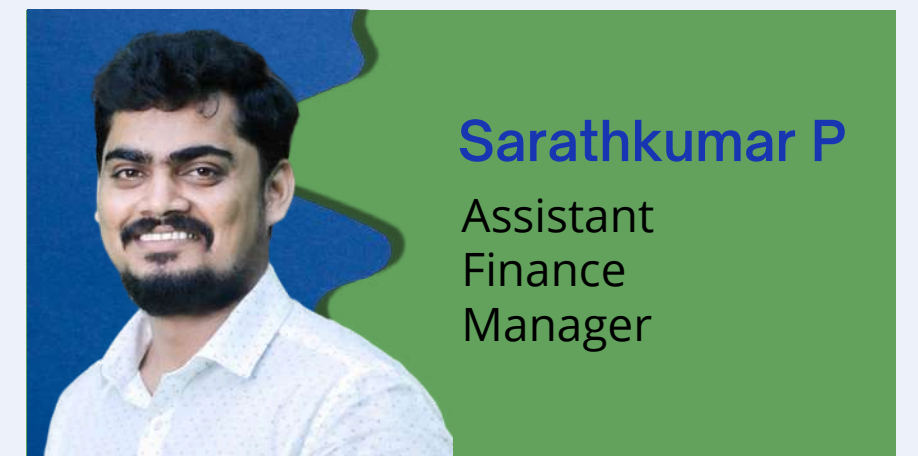
K.Kalliani

Principal Engineer -
Electrical

Our Team Strength



Rising Leaders



The background is a dark blue gradient. In the center, there are three concentric circles. Overlaid on these circles are stylized circuit lines that extend towards the left and right edges of the frame. These lines consist of horizontal and vertical segments connected by small circular nodes, resembling a network or data flow diagram.

MEP WAREHOUSE PROJECTS

MECHANICAL | ELECTRICAL | PLUMBING

ESR GMR LOGISTIC PARK

Hyderabad, Telangana
India

Nature of Building: Warehouse



Scope of Work:

- Campus level MEPF system design.
- Five potential design option in each services with cost & energy efficiency.
- 30% cost efficient in FPS design with 100% compliance of FM Global guidelines.
- 20x faster design completion with 95% Quality control through AI Expert.
- Reduces Project Turnaround time with smart design decision.

Project Size

2.8 Mn Sq ft

HOSKOTE LOGISTIC PARK

Bengaluru, Karnataka
India

Nature of Building: Warehouse



Scope of Work:

- Campus level MEPF system design.
- 100% Transport Asset Protection Association Certified Security design.
- Effective utilization of Machine Learning & Automation for Security and Safety design.
- MEPF system design focused on balancing Up-Front cost of the system with the long term operational saving.
- 20% Lesser Utility space consumption.

Project Size

0.5 Mn Sq ft

LODHA ASODE INDUSTRIAL WAREHOUSE AND LOGISTIC PARK

Mumbai, Maharashtra
India

Nature of Building: Warehouse



Scope of Work:

- Campus level MEPF system design.
- 20x faster design completion with 95% Quality control through AI Expert.
- Reduces Project Turnaround time with smart design decision.
- Effective Utilization of Machine Learning & Automation for Security and Safety design.
- MEPF system design focused on balancing Up-Front cost of the system with the long term operational saving.

Project Size

1.2 Mn Sq ft



Apollo Tyres, Chennai



Salcomp, Chennai



Zoho Tenkasi



Cognizant - Ozone Techno Park, Chennai



TPI Composites, Chennai



Mondelez Internal, Sricity



STTG Data Centre, Chennai & Pune



DELL, Hyderabad



Saint Gobin India Pvt Ltd



ITC - Paperboards and
Specialty Papers Division,
Telungana.



DELL Crystal Down, Bangalore



Tata Communications, Bangalore

Our Prestigious Clients in India

Industrial / Warehouse



IT Office / Commercial / Labs/Hospitals



Our Prestigious Clients in Abroad



Vertex



Innowell Engineering International Pvt Ltd

SIVAKASI

2/44, 2/45 Maraneri,
Sivakasi,
Virudhunagar – 626124,
Tamil Nadu, India.

✉ info@innowellgroup.com
☎ +91 91509 12319

CHENNAI

269/3B, 1st & 2nd Floor,
First Cross Street , Vimalraj
Salai , Netaji Nagar,
Alapakkam main Road ,
Maduravayal, Chennai,
Tamil Nadu-600095

✉ info@innowellgroup.com
☎ +91 98846 59976

BANGALORE

319 First floor, Third Cross,
NGEF Layout Kasturi Nagar,
Ramamurthy Nagar,
Bengaluru-560016,
Karnataka, India

✉ samuel@innowellgroup.com
☎ +91 99723 00436

HYDERABAD

Plot no - 111,
KPHB Colony,
Behind Nexus Mall,
Hyderabad,
Telangana-500072.

✉ syed@innowellgroup.com
☎ +91 62815 97156



INNOWELL

www.innowellgroup.com

For detailed information, contact concerned account manager.



<https://www.linkedin.com/company/innowell-engineering-international-pvt-ltd/>