

# INNOWELL ENGINEERING INTERNATIONAL PVT LTD

• BENGALURU • CHENNAI • SIVAKASI • HYDERABAD • BANGLADESH



INNOWELL

An ISO 9001: 2015, 14001:2015, 27001:2022, and 50001:2018 Certified Company

## Workplace Projects Capability

Inspired by Commitment. Powered by Passion.



# OUR VISION

Innowell aspires to be a global leader for innovative solutions to its customers through passionate professionals

## **Core Values:**

Integrity | Customer Excellence | People |  
Learning | Innovative



# MISSION



## Develop

Nurture young talents



## Empower

Empower talents with innovative process and standards



## Care

Provide Challenging and joyful working Environment



## Serve

Continuously explore client's needs and serve better





2013

22

Members



2018

44

Members



2025

200+

Members



Innowell received LEED Proven Provider recognition from GBCI for continuously delivering excellent and efficient Sustainable Design Practices



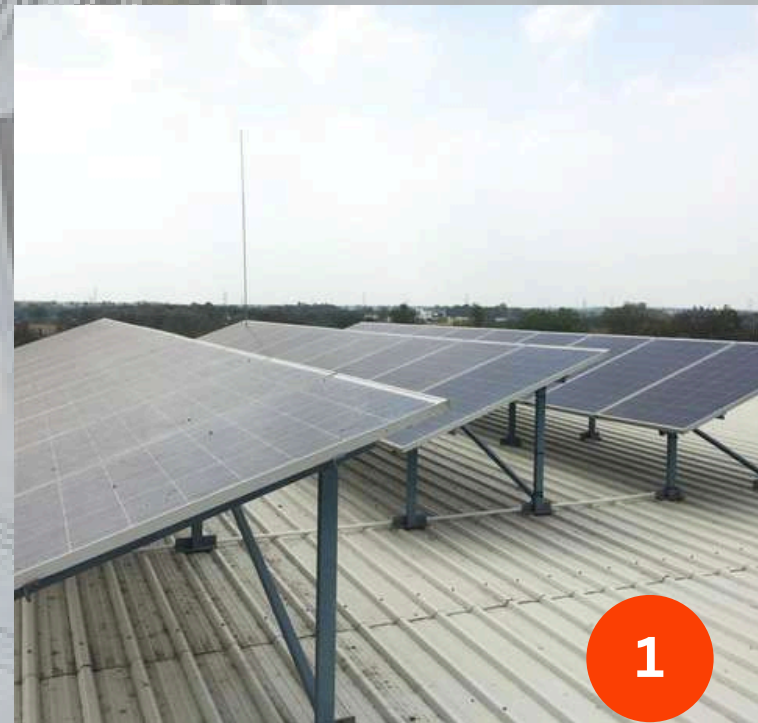
**PROVEN**  
**PROVIDER™**



# Our Ever Green village office

in Maraneri, Sivakasi,  
Tamilnadu, India

- 300% Efficient HVAC
- 200% Solar-Powered
- 100% Day-lighted
- 100% Views
- 55% Water Reuse
- 30% Roof Garden
- 39% Material Reuse



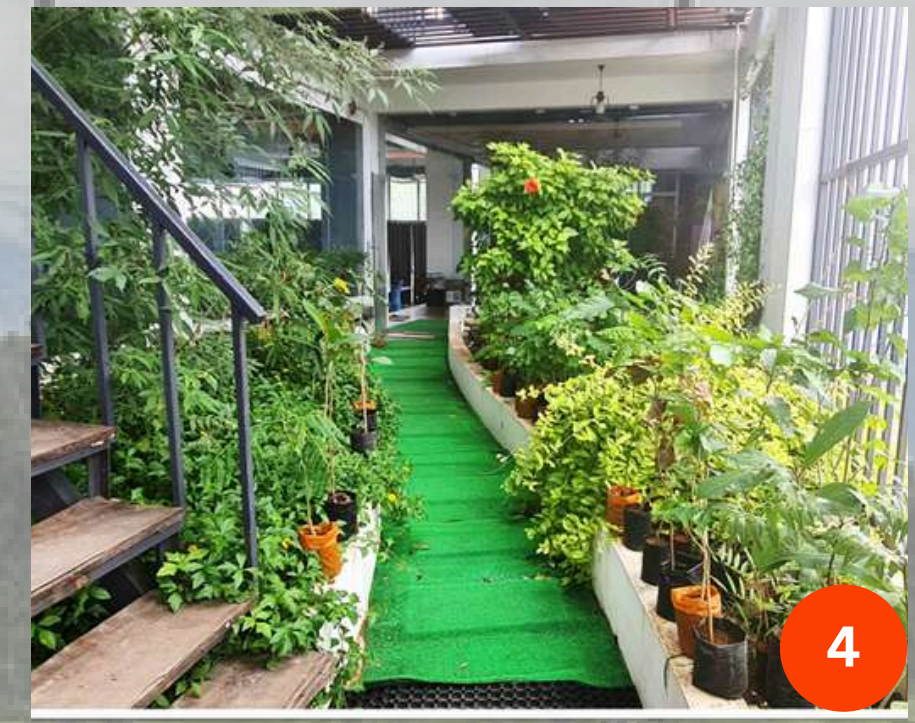
1. Solar Panel



3. Daylight design, hydration plants, aesthetic wall arts



2. Reused materials, ergonomic workstation.



4. Nature incorporated roof garden





Acoustical Quiet Zone



Aesthetic Stair



Proper Lightings



Stage for Celebration





**Green Studio Set**



**Virtual Output Delivers**



**Insulated Duct Network**



**Evaporative Cooling System**



Certified on



**Achieved certification under the ISO 9001:2015, 14001:2015,  
27001:2022, 45001:2018, 50001:2018 standard for  
Integrated Quality Management**



For our dedication to the  
**Planet, People, and  
Environment**



**INNOWELL**

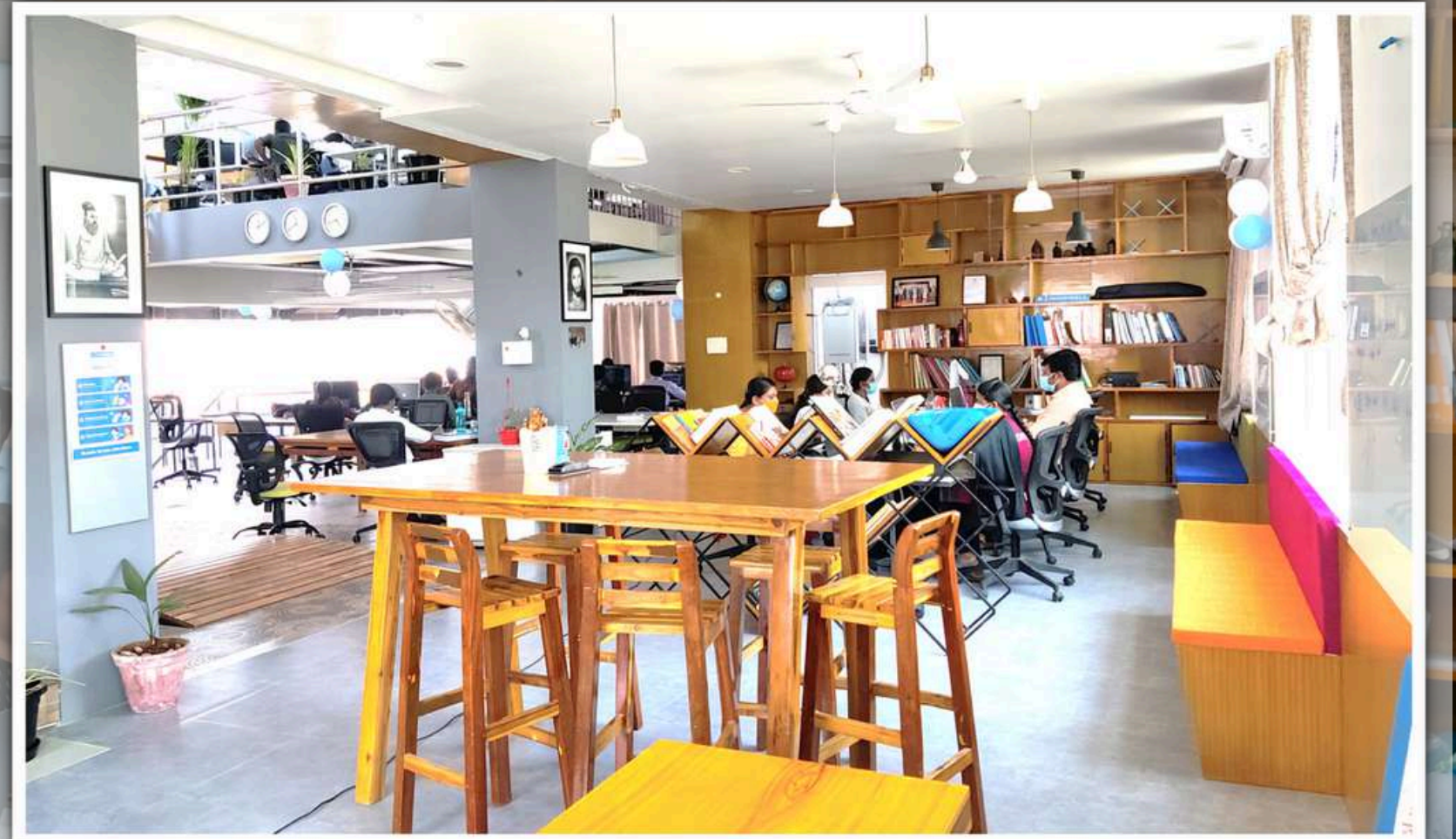
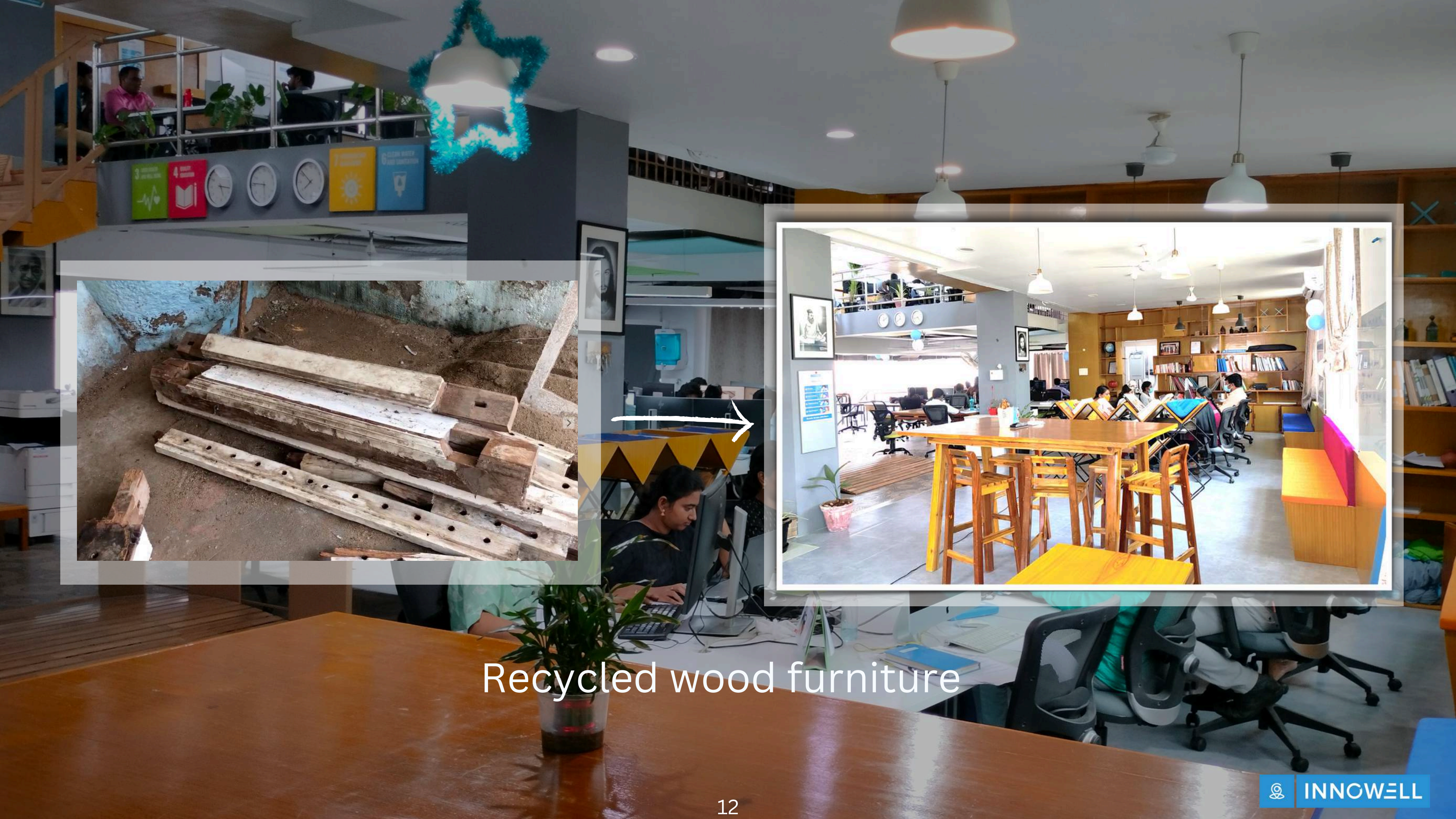


# THE WORLD'S HIGHEST LEED CERTIFIED

under v4.1 EB O&M Category



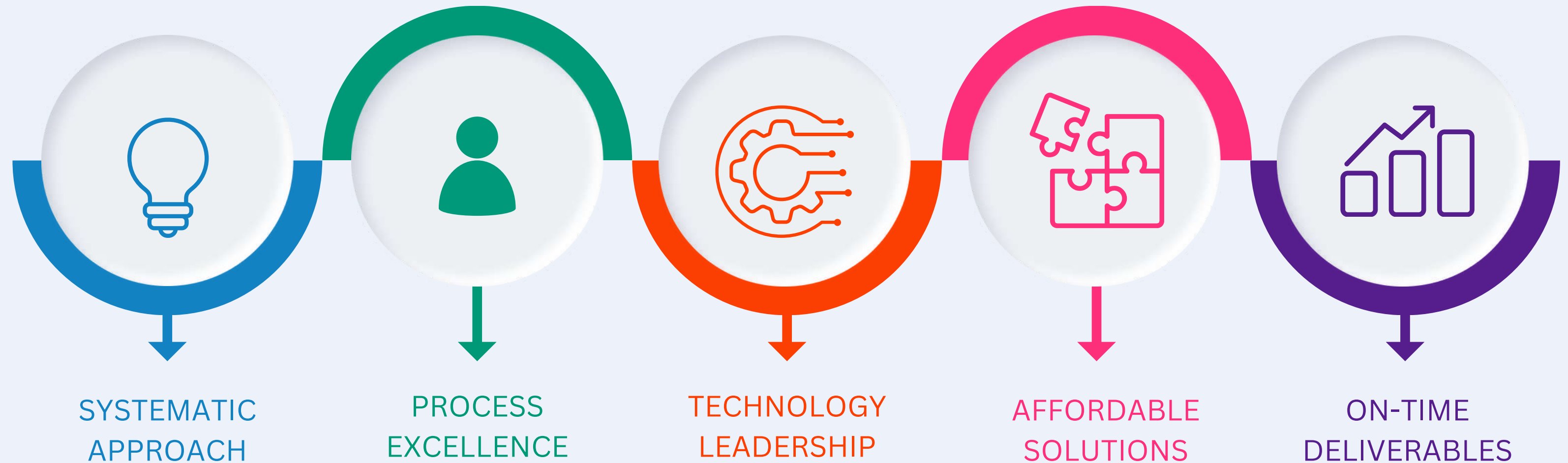




Recycled wood furniture



# Why Innowell





# What we do



## MEP

- HVAC
- Electrical
- Plumbing & Utility Design
- Fire Protection System



## BIM

- BIM – MEP & Industrial Piping
- BIM – C&ID
- BIM – Consultancy

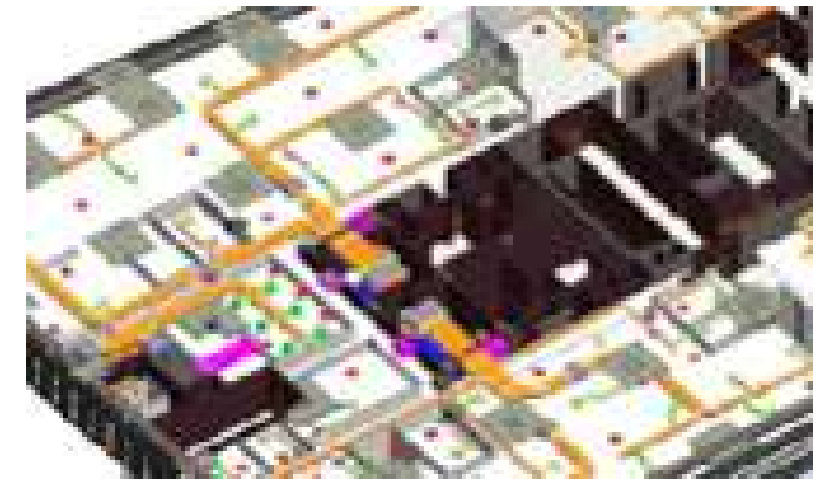
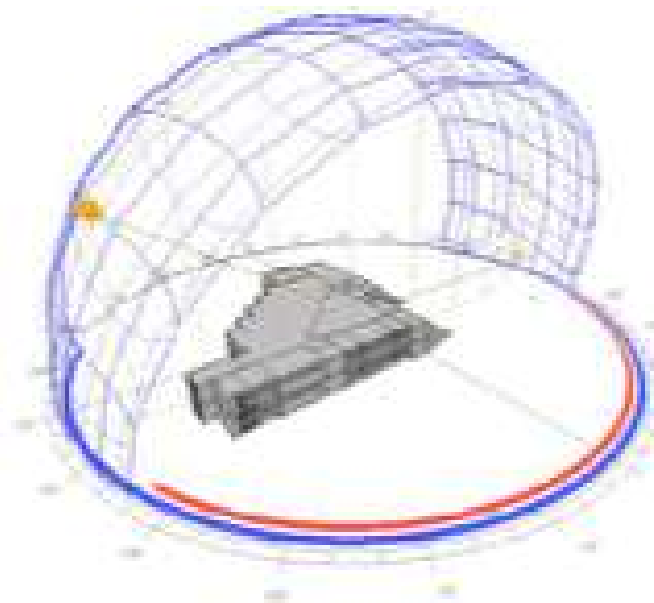


## Sustainability

- LEED
- IGBC
- GRIHA
- WELL
- Carbon Reduction Programme
- Energy Audit



# How we do





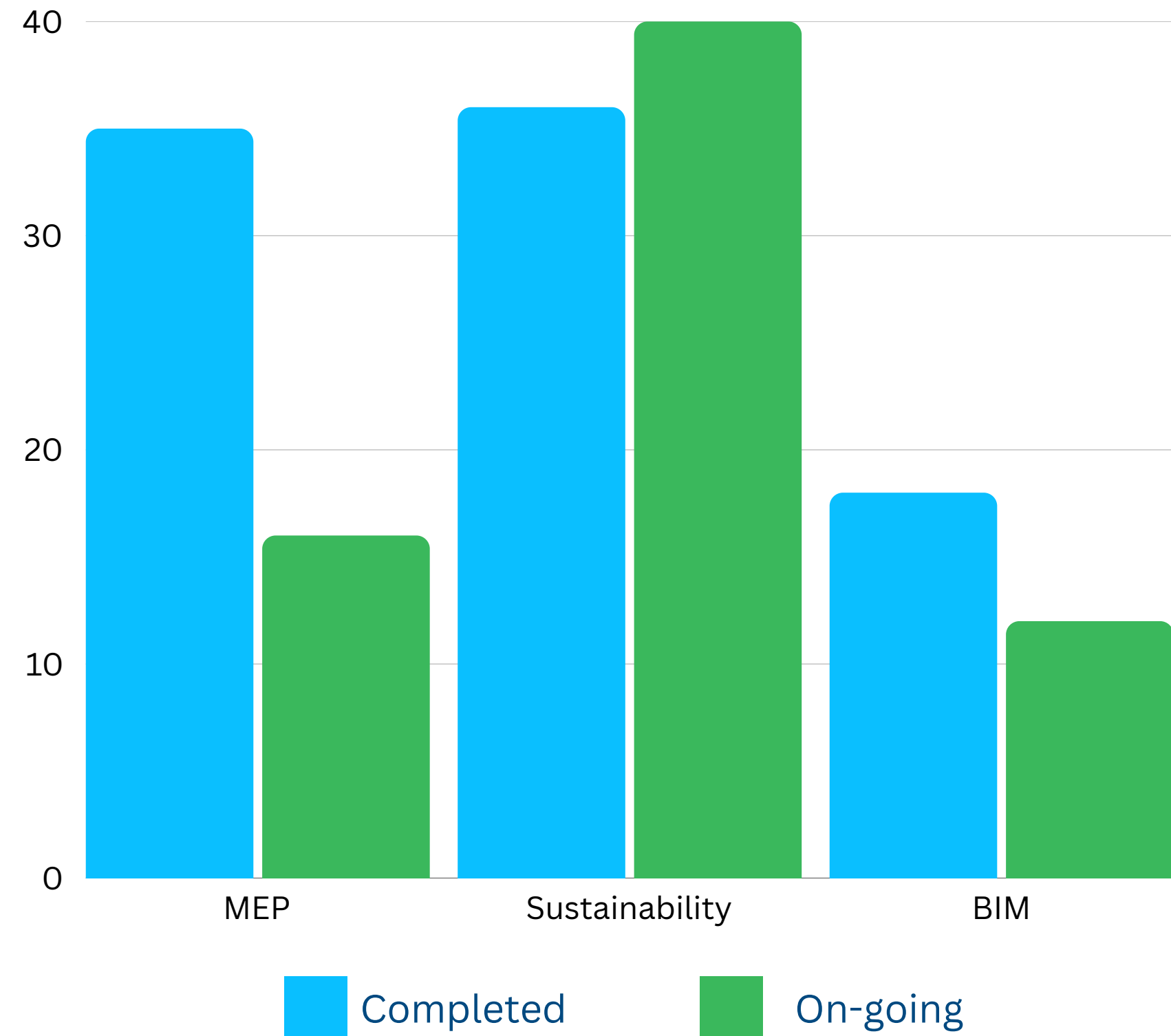


## Our Market Segments

- Commercial Buildings
- Office Fit-outs
- Data centres and Labs
- Hospitals
- Industries
  - Electronic Industries
  - Tyre Factories
  - Bottling Factories
  - Chocolate Factories
  - Textile and Garment Factories
- Clean room Applications

# Project Accomplishment

Project Size  
in Mn SFT





# Leadership Profile



**Gunasekaran**

Director

LEED AP, WELL AP, WELL PTA



**Sengathir Selvan**

Director

Certified Data Centre Specialist  
Certified Cleanroom professional



**Sankareswari**

Director



**Samuel**

Associate Director



**Regobert**

Associate Director

IGBC AP



**Pandidurai**

Manager,  
BIM

IGBC AP



**Thalaiselvam**

Manager,  
Corporate Sustainability

LEED AP, WELL AP,  
IGBC AP, EDGE Expert,  
TRUE Advisor,  
GRIHA CP, LCA Specialist



**K.Kalliani**

Principal Engineer -  
Electrical

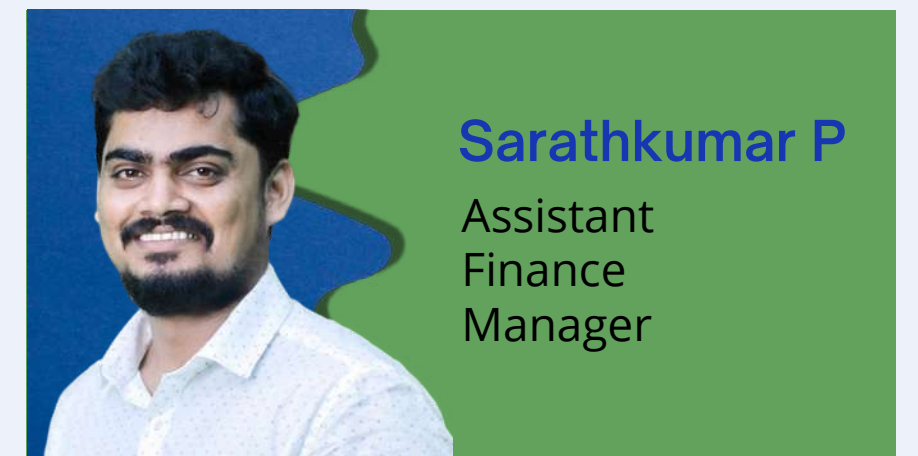


# Our Team Strength





# Rising Leaders





## Accredited Professionals



WELL AP



LEED AP



IGBC AP



GRIHA CP



Sustain



LCA Specialist



Edge Expert



Active Score  
AP



INNOWELL



# Our Milestone

THE BUSINESS STANDARD

Monday April 17, 2023

Home Economy Stocks Analysis World+Biz Sports Features

Find your thing

Connect and share with people you know. See the latest from your community. Facebook®

Visit Site

RMG

TBS Report

25 February, 2023, 09:55 pm

Last modified: 26 February, 2023, 03:34 pm

f

wa

tw

wh

pr

+

RELATED NEWS


Transition challenges for greening the fashion industry

Another RMG factory in Bangladesh recognised as green with platinum rating

Bangladesh hosts half the top 100 LEED certified green factories across globe

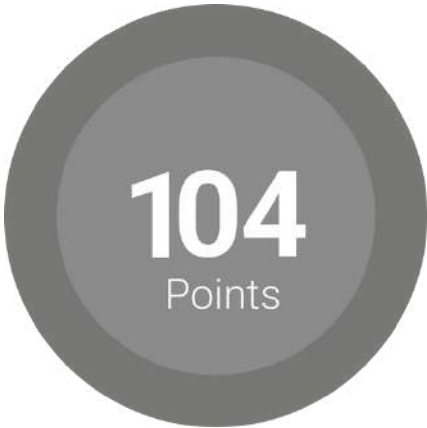
2 more factories recognised 'green' with platinum rating

Bangladeshi garment factory becomes global leader among LEED certified factories





The world's highest scored factory under LEED v4 as of now: 2023





# Experience our futuristic Design Process



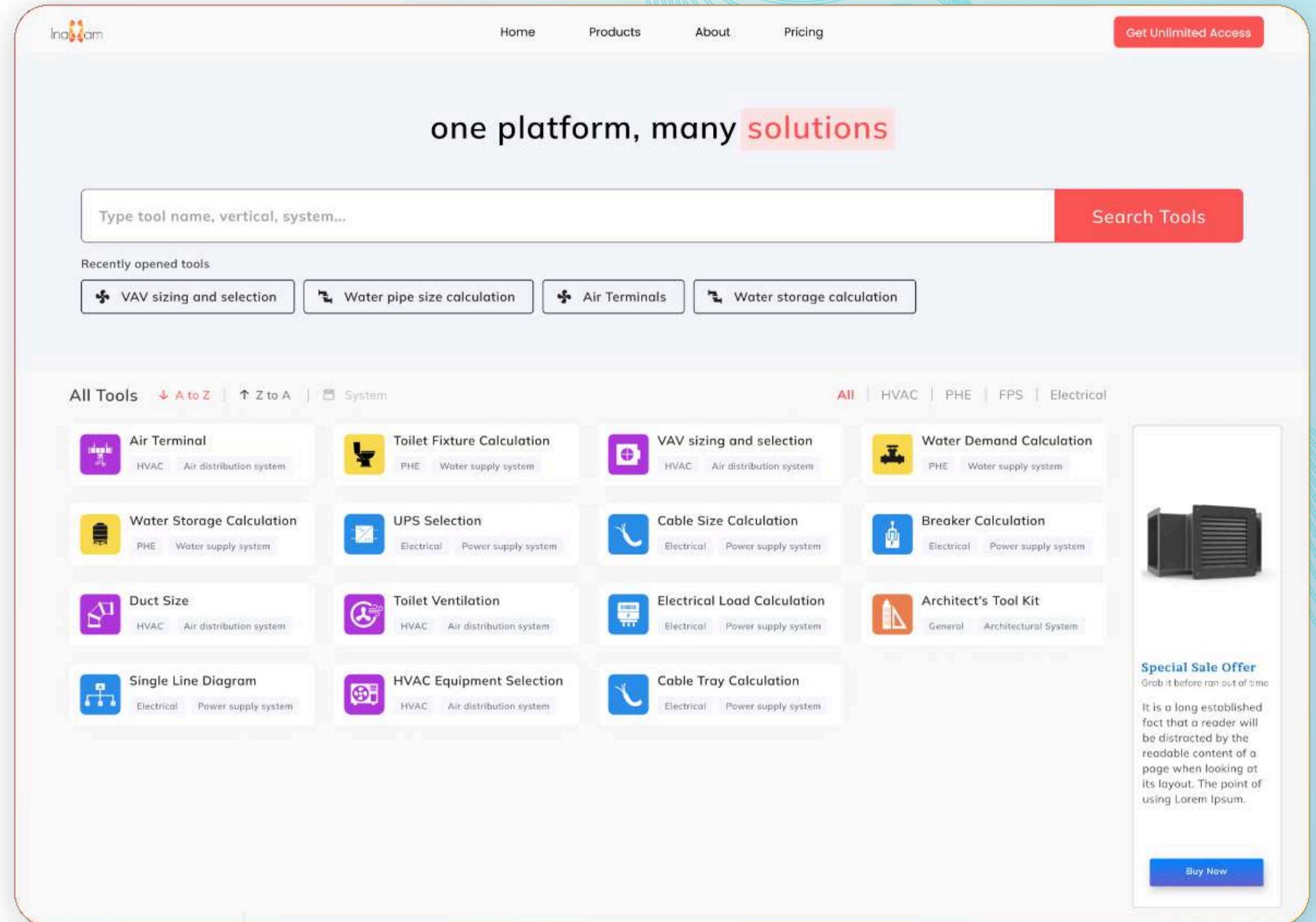


# Key Approach



INAKKAM

- 100% Design Accuracy
- Lightning-fast Deliverables
- Optional Analysis for optimal selection
- 1000s of product data base
- Integration of standards (NBC, LEED)
- AI based prediction



Our MEP designs are created using an automation platform



# Key Approach

Air Terminals SelectionHPE - Metro

Room Dimension

Length

30

m

Width

15

m

Area

450.0

m<sup>2</sup>

Height of (BOS)

4

m

Height of (BOFC)

3.5

m

Supply Air Flow Rate

10701

CMH

Return Air Flow Rate

10701

CMH

Noise Level

35

NC

Air Terminal Options

AllSupplyReturn

S.No	Manufacturer & Image	Type	Neck Velocity m/s	Quantity No(S)	Air Terminal Neck Size mm	Air Flow Rate / Terminal CMH	Noise Level NC	Total ADPI	Cost Indicator
1		Supply	4.4	8 5 # Less	Neck Size Dia 290 Overall Size 600 x 600	1337	29 6 NC Less	-	1.00
		Return	3.2	11 3 # Less	Neck Size Dia 290 Overall Size 600 x 600	972	18 17 NC Less	-	
		Plaque			Neck Size Dia 250				

UPS e-selectHPE - Metro

IT/ITES

Data Centre

Manufacturing

Others

Output Power Load

300

kVA

Modular

Load Factor (%)

80

%

Future Expansion (%)

0

%

Redundancy

N

N+1

N+N

2N+1

Form Factor

Floor Mounted

Rack Mounted

Manufacturer

Floor Space

Cost

Relative Reliability Benchmark

socomec

200 KVA x 4  
(25 x 8 Modules on Each)

248 Sqft  
UPS Only

₹ 8,700,000

35% Space Saving

19% Cost Saving

100%

socomec

375 / 400 KVA x 2  
(25 x 15 Modules on Each)

173 Sqft  
UPS Only

₹ 9,200,000

55% Space Saving

15% Cost Saving

100%

Automated Engineering Tools for best accuracy, reliability and faster delivery.



INAKKAM



# Key Approach



ENTHIRAN

enthiran.jupiterbrothers.com/project/NjNkZjhlYzJiMDFKYTE3M2Q0Mjg3NTlm/Nj...

Project

Sengathir Selvan Karunanithi :

Cognizant MEP Chiller replacement → Chiller Plant revamp - DBR → Checkpoints info

Self QC Marks 0 Peer QC Marks 0

0% Completed - 0 Errors

Yet to be Submitted / Yet to be Reviewed / Yet to be Approved

Checkpoints

Check if the parapet wall around the air-cooled chillers does not block ambient airflow	<input type="checkbox"/> Y <input type="checkbox"/> N <input type="checkbox"/> n.a	<input type="radio"/> Yellow	E.I   Basic Design issue	<input type="button" value="i"/> <input type="button" value="v"/>
Check if the space for active harmonic filters are available, near the chillers	<input type="checkbox"/> Y <input type="checkbox"/> N <input type="checkbox"/> n.a	<input type="radio"/> Yellow	E.I   Basic Design issue	<input type="button" value="i"/> <input type="button" value="v"/>
Check if the distance between existing structural members are suitable to accommodate new chillers' approximate width / length	<input type="checkbox"/> Y <input type="checkbox"/> N <input type="checkbox"/> n.a	<input type="radio"/> Yellow	E.I   Basic Design issue	<input type="button" value="i"/> <input type="button" value="v"/>
Check if the distance between air-cooled chillers are as per OEM recommendations	<input type="checkbox"/> Y <input type="checkbox"/> N <input type="checkbox"/> n.a	<input type="radio"/> Yellow	E.I   Basic Design issue	<input type="button" value="i"/> <input type="button" value="v"/>
Check if the distance between air-cooled chiller and nearest walls / solid structure are as per OEM recommendations	<input type="checkbox"/> Y <input type="checkbox"/> N <input type="checkbox"/> n.a	<input type="radio"/> Yellow	E.I   Basic Design issue	<input type="button" value="i"/> <input type="button" value="v"/>
Check if the existing chillers can be removed / lifted directly without disturbing existing other services	<input type="checkbox"/> Y <input type="checkbox"/> N <input type="checkbox"/> n.a	<input type="radio"/> Yellow	E.I   Basic Design issue	<input type="button" value="i"/> <input type="button" value="v"/>
Check if the nearby roads are available to park the lifting cranes for Chiller removal	<input type="checkbox"/> Y <input type="checkbox"/> N <input type="checkbox"/> n.a	<input type="radio"/> Yellow	E.I   Basic Design issue	<input type="button" value="i"/> <input type="button" value="v"/>

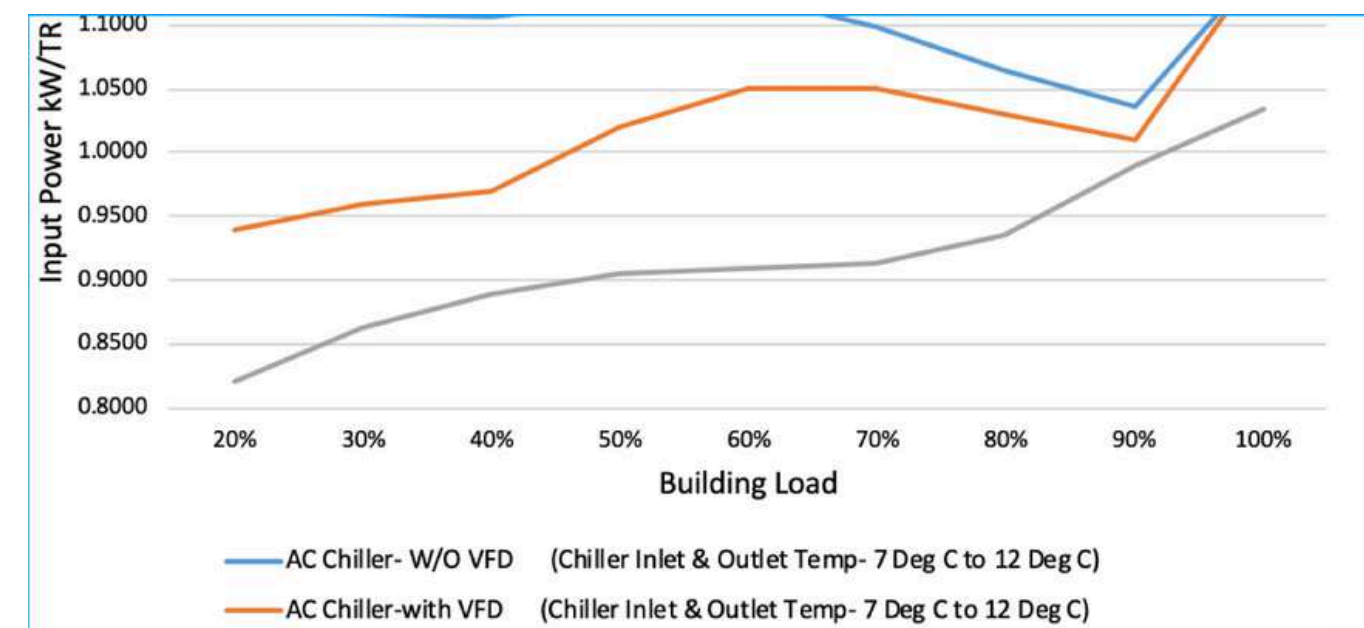
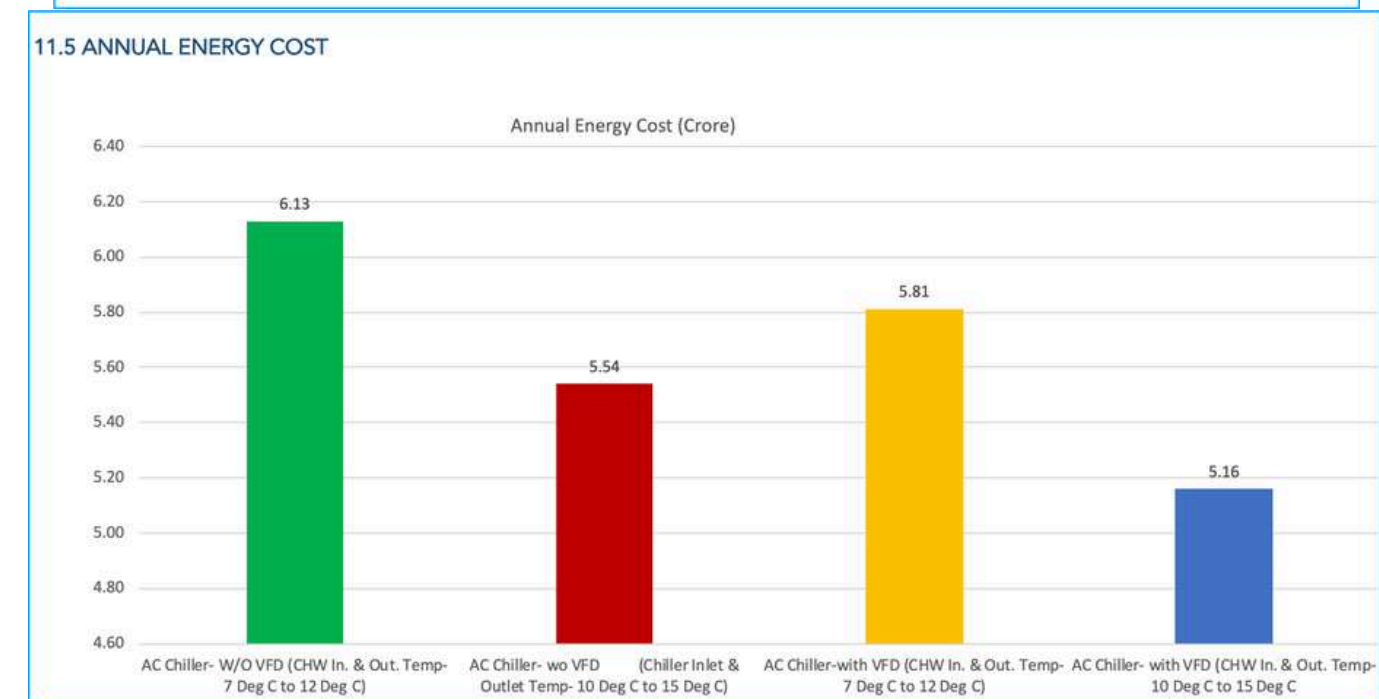
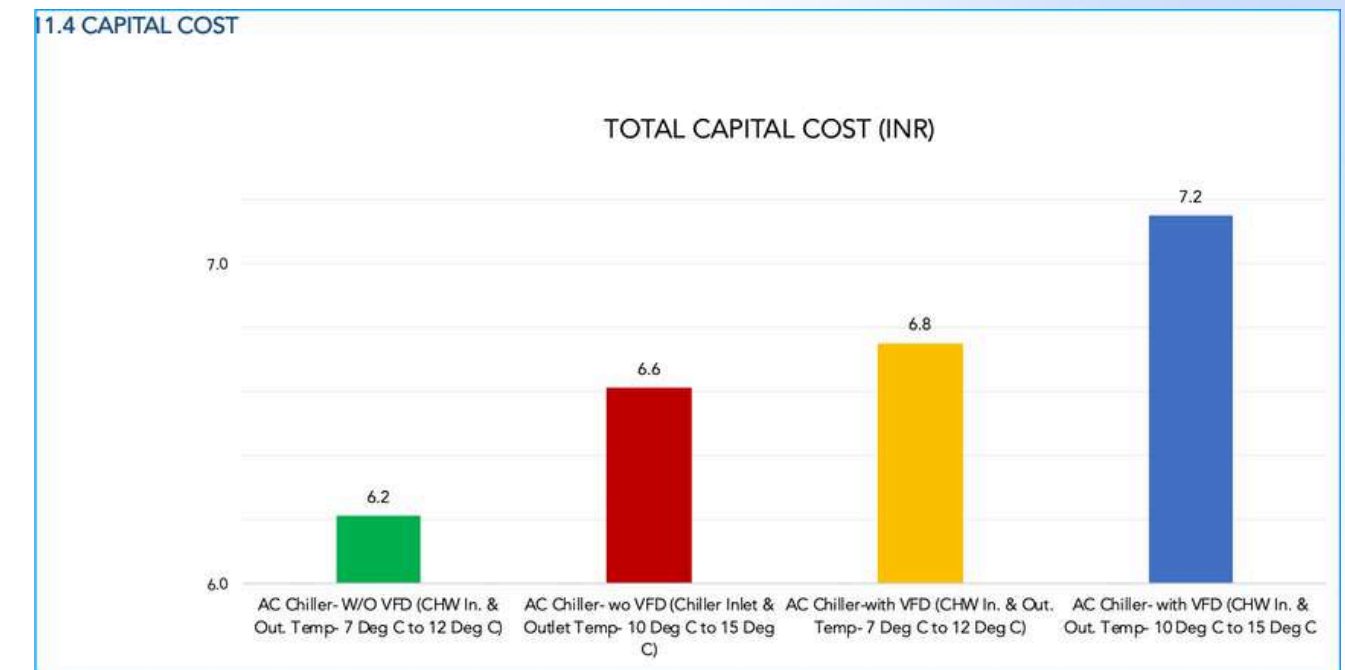
Online Quality Check platform





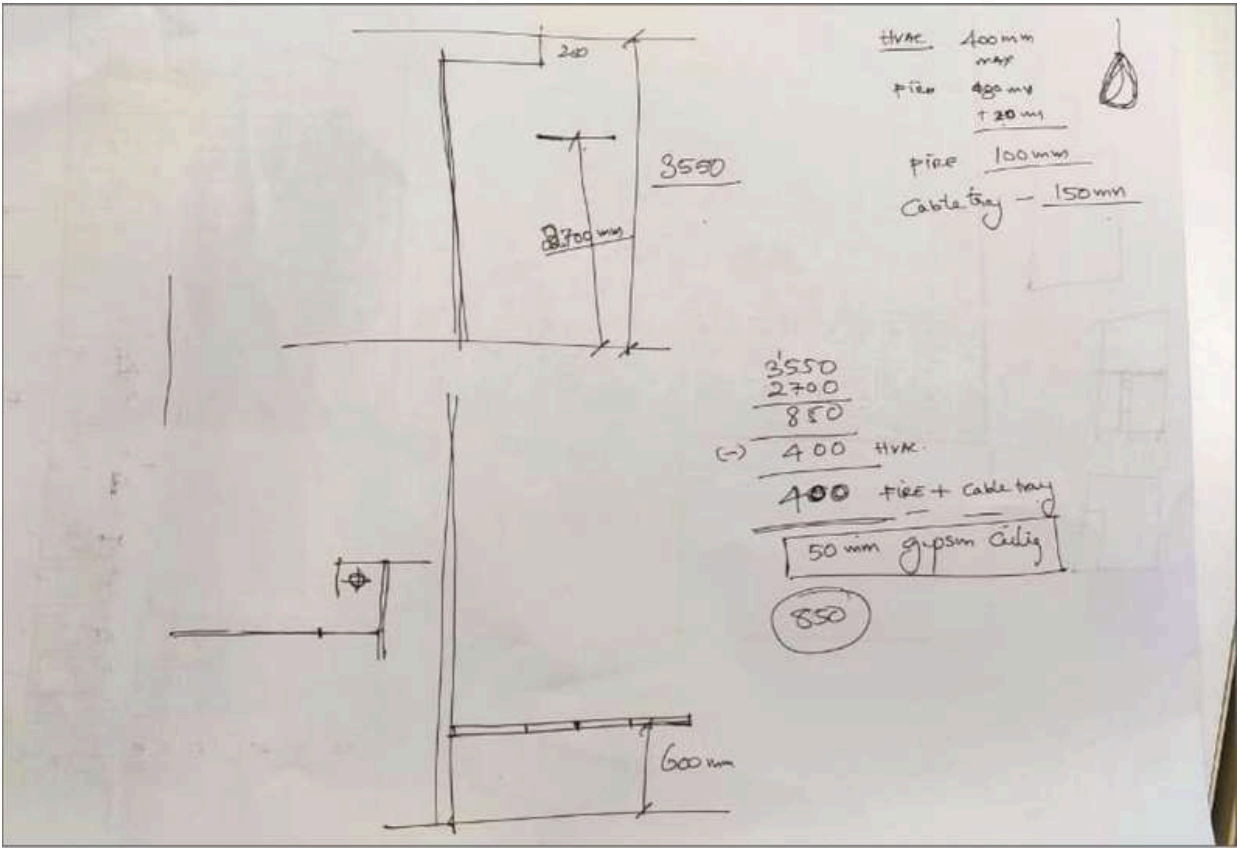
## Smart Design Documents Helps to Make Decision Faster

Optimum Capex, Opex, and ROI decisions can be faster through Visually engaging Charts & Graphics.

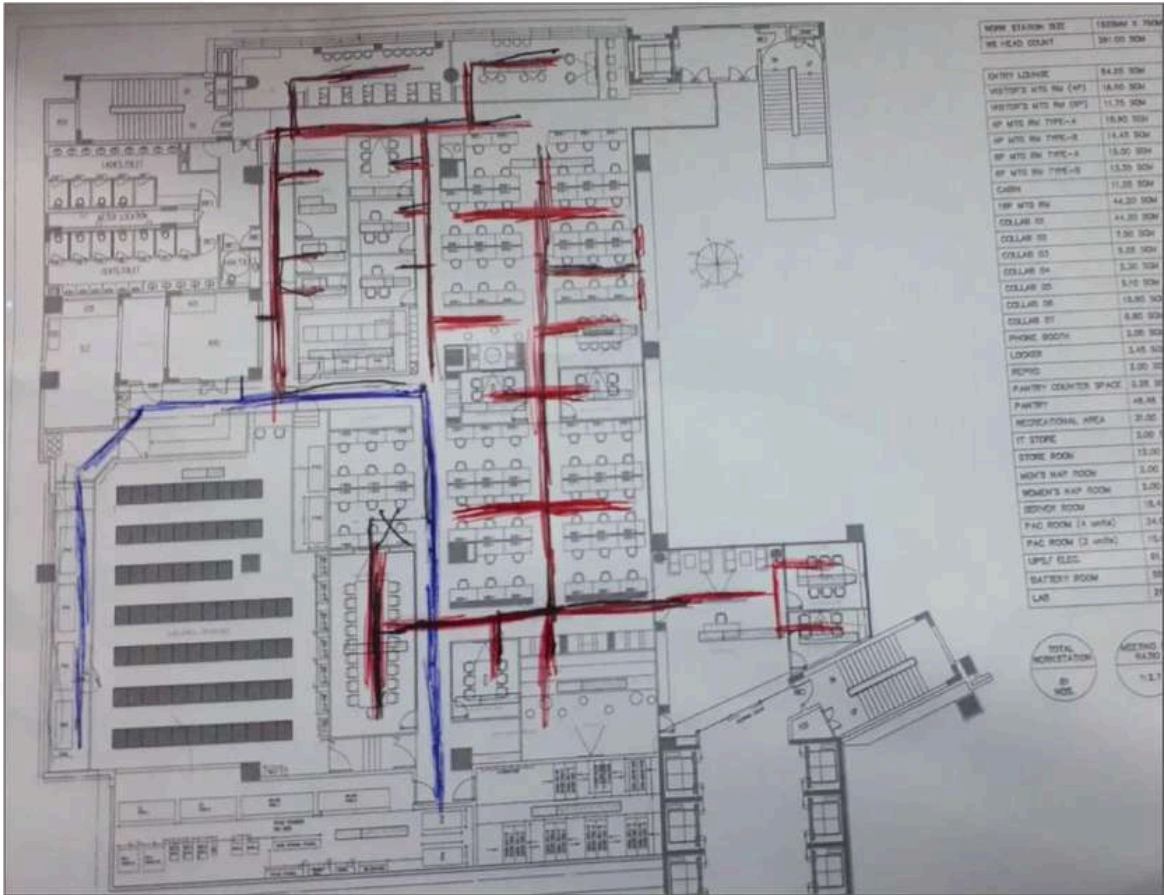
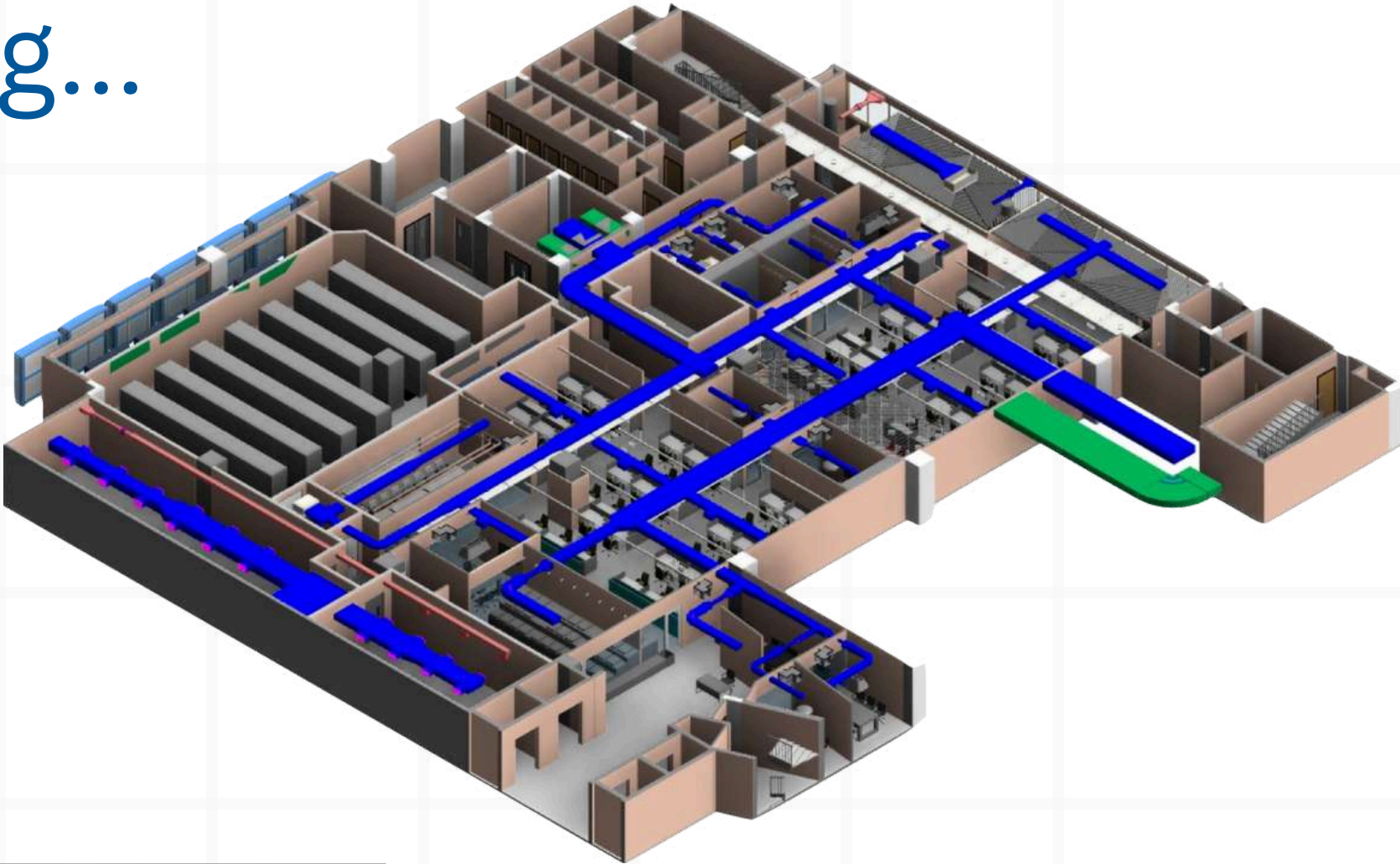




# Design Concept to BIM Modelling...

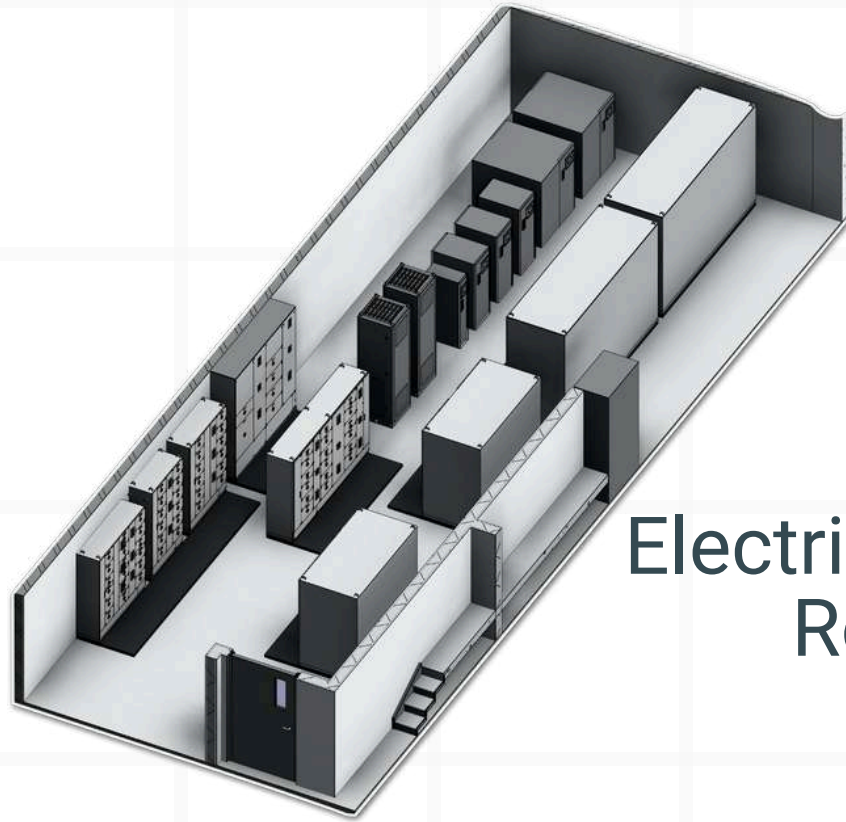


Hand Sketch Plan

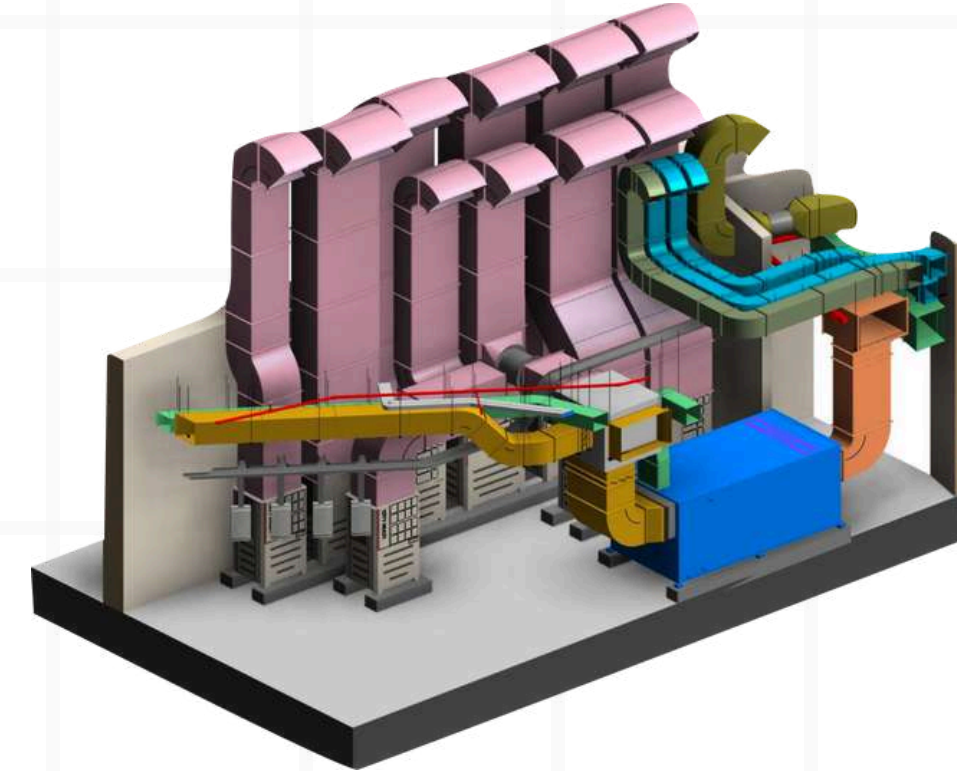




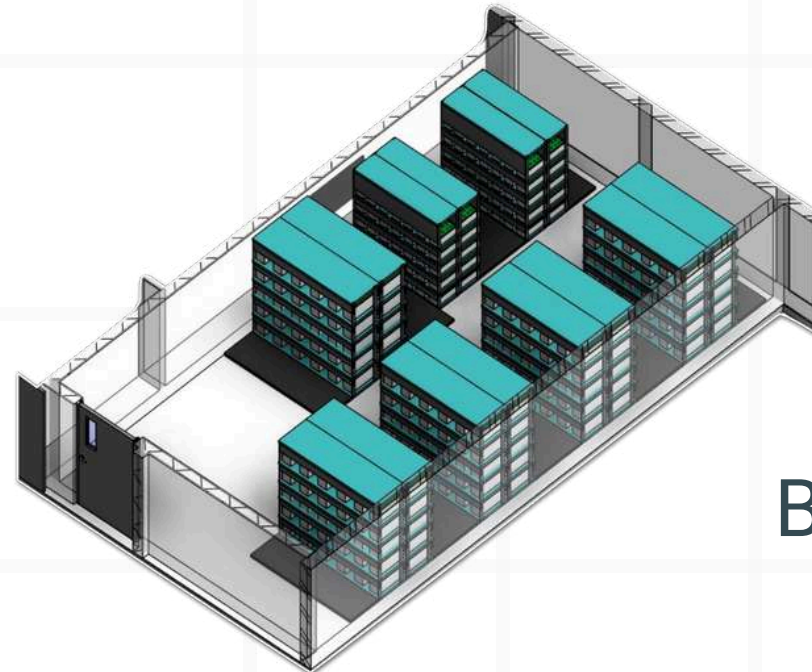
# Critical Room Space Planning.. Through BIM



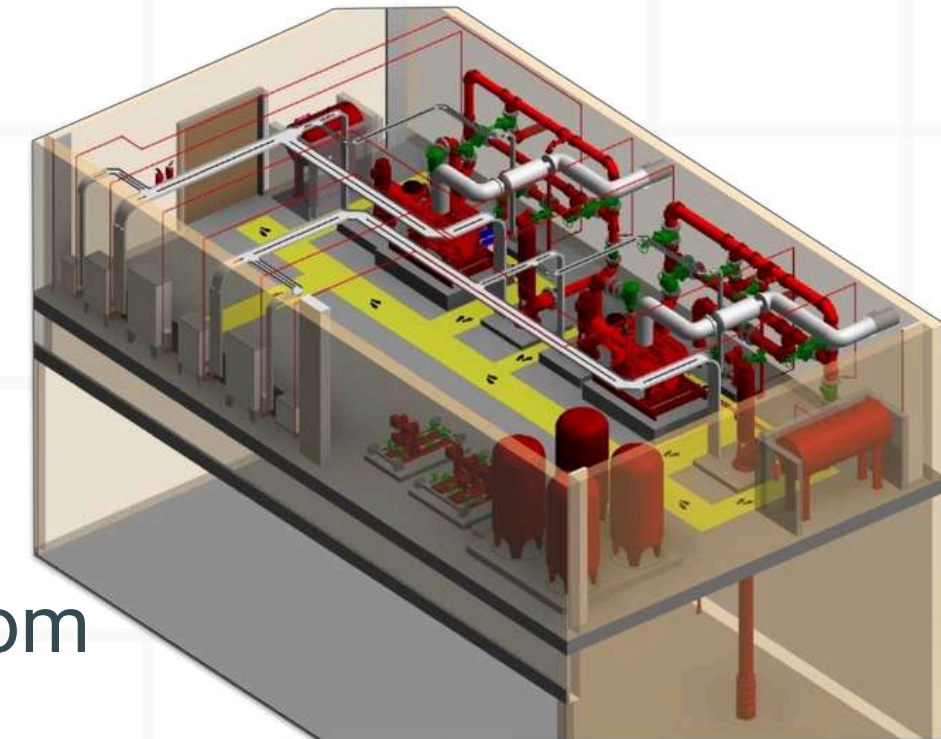
Electrical Panel Room



AHU Room



Battery Room



Fire Pump Room



# BIM Model Based Automated Quantification (BOQ)

1. Fabrication Duct schedule							
Tag	Size	Gauge	Thickness	Length	Duct Area (Sq.m)	Count	Unit Reference
Return Air Duct							
BF-001	1.4x1.4	20 G	1.00 mm	0.60	3.35	1	AHU-1
BF-002	1.4x1.4	20 G	1.00 mm	0.49	2.73	1	AHU-1
BF-004	1.4x1.4	20 G	1.00 mm	0.73	4.10	1	AHU-1
BF-005	1.4x1.4	20 G	1.00 mm	1.20	6.72	1	AHU-1
BF-006	1.4x1.4	20 G	1.00 mm	0.80	4.50	1	AHU-1
BF-009	1.4x1.4	20 G	1.00 mm	1.05	5.89	1	AHU-1
BF-011	1.4x1.4	20 G	1.00 mm	1.20	6.72	1	AHU-1
					34.01	7	
Supply Air Duct							
BF-014	1.4x1.4	20 G	1.00 mm	1.20	6.72	1	AHU-1
BF-017	1.4x1.4	20 G	1.00 mm	0.31	1.71	1	AHU-1
BF-019	1.4x1.4	20 G	1.00 mm	0.28	1.58	1	AHU-1
BF-021	1.4x1.4	20 G	1.00 mm	1.28	7.19	1	AHU-1
BF-022	1.4x1.4	20 G	1.00 mm	0.89	5.00	1	AHU-1
BF-023	1.4x1.4	20 G	1.00 mm	0.55	3.09	1	AHU-1
BF-025	1.4x1.4	20 G	1.00 mm	1.20	6.72	1	AHU-1
BF-026	1.4x1.4	20 G	1.00 mm	1.20	6.72	1	AHU-1
BF-027	1.4x1.4	20 G	1.00 mm	1.20	6.72	1	AHU-1
BF-028	1.4x1.4	20 G	1.00 mm	1.20	6.72	1	AHU-1
					52.17	10	
					86.18	17	

FPS PIPE FITTING SCHEDULE				
DESCRIPTION	SIZE (DIA)	UNIT COST (NOS)	QTY	TOTAL COST
END CAP				
END CAP	40ø	400	1	400
GROOVED COUPLING				
GROOVED COUPLING	100ø-100ø	100	21	2100
GROOVED ELBOW				
GROOVED ELBOW	100ø-100ø	150	7	1050
GROOVED REDUCING TEE				
GROOVED REDUCING TEE	100ø-100ø-20ø	200	2	400
GROOVED REDUCING TEE	100ø-100ø-40ø	250	1	250
THREADED REDUCER				
THREADED REDUCER	40ø-20ø	400	1	400
THREADED TEE				
THREADED TEE	40ø-40ø-20ø	400	5	2000
THREADED TEE	40ø-40ø-40ø	400	1	400
THREAED ELBOW				
THREAED ELBOW	20ø-20ø	350	11	3850
THREAED ELBOW	40ø-40ø	400	4	1600

1. Fabrication Duct schedule							
Tag	Size	Gauge	Thickness	Length	Duct Area (Sq.m)	Count	Unit Reference
Return Air Duct							
BF-001	1.4x1.4	20 G	1.00 mm	0.60	3.35	1	AHU-1
BF-002	1.4x1.4	20 G	1.00 mm	0.49	2.73	1	AHU-1
BF-004	1.4x1.4	20 G	1.00 mm	0.73	4.10	1	AHU-1
BF-005	1.4x1.4	20 G	1.00 mm	1.20	6.72	1	AHU-1
BF-006	1.4x1.4	20 G	1.00 mm	0.80	4.50	1	AHU-1
BF-009	1.4x1.4	20 G	1.00 mm	1.05	5.89	1	AHU-1
BF-011	1.4x1.4	20 G	1.00 mm	1.20	6.72	1	AHU-1
					34.01	7	
Supply Air Duct							
BF-014	1.4x1.4	20 G	1.00 mm	1.20	6.72	1	AHU-1
BF-017	1.4x1.4	20 G	1.00 mm	0.31	1.71	1	AHU-1
BF-019	1.4x1.4	20 G	1.00 mm	0.28	1.58	1	AHU-1
BF-021	1.4x1.4	20 G	1.00 mm	1.28	7.19	1	AHU-1
BF-022	1.4x1.4	20 G	1.00 mm	0.89	5.00	1	AHU-1
BF-023	1.4x1.4	20 G	1.00 mm	0.55	3.09	1	AHU-1
BF-025	1.4x1.4	20 G	1.00 mm	1.20	6.72	1	AHU-1
BF-026	1.4x1.4	20 G	1.00 mm	1.20	6.72	1	AHU-1
BF-027	1.4x1.4	20 G	1.00 mm	1.20	6.72	1	AHU-1
BF-028	1.4x1.4	20 G	1.00 mm	1.20	6.72	1	AHU-1
					52.17	10	
					86.18	17	

1. Sound Attenuator Schedule				
System	Tag	Size (WxHxL)	Count	Floor Reference
Fresh Air Duct				
Fresh Air Duct	ATT-05	0.5x0.4x0.5	1	Basement
Return Air Duct				
Return Air Duct	ATT-02	1.0x0.6x1.0	1	Basement
Return Air Duct	ATT-04	0.4x0.4x1.0	1	Basement
Return Air Duct	ATT-01	1.4x1.4x1.5	1	Basement
Supply Air Duct				
Supply Air Duct	ATT-03	1.4x1.4x1.5	1	Basement

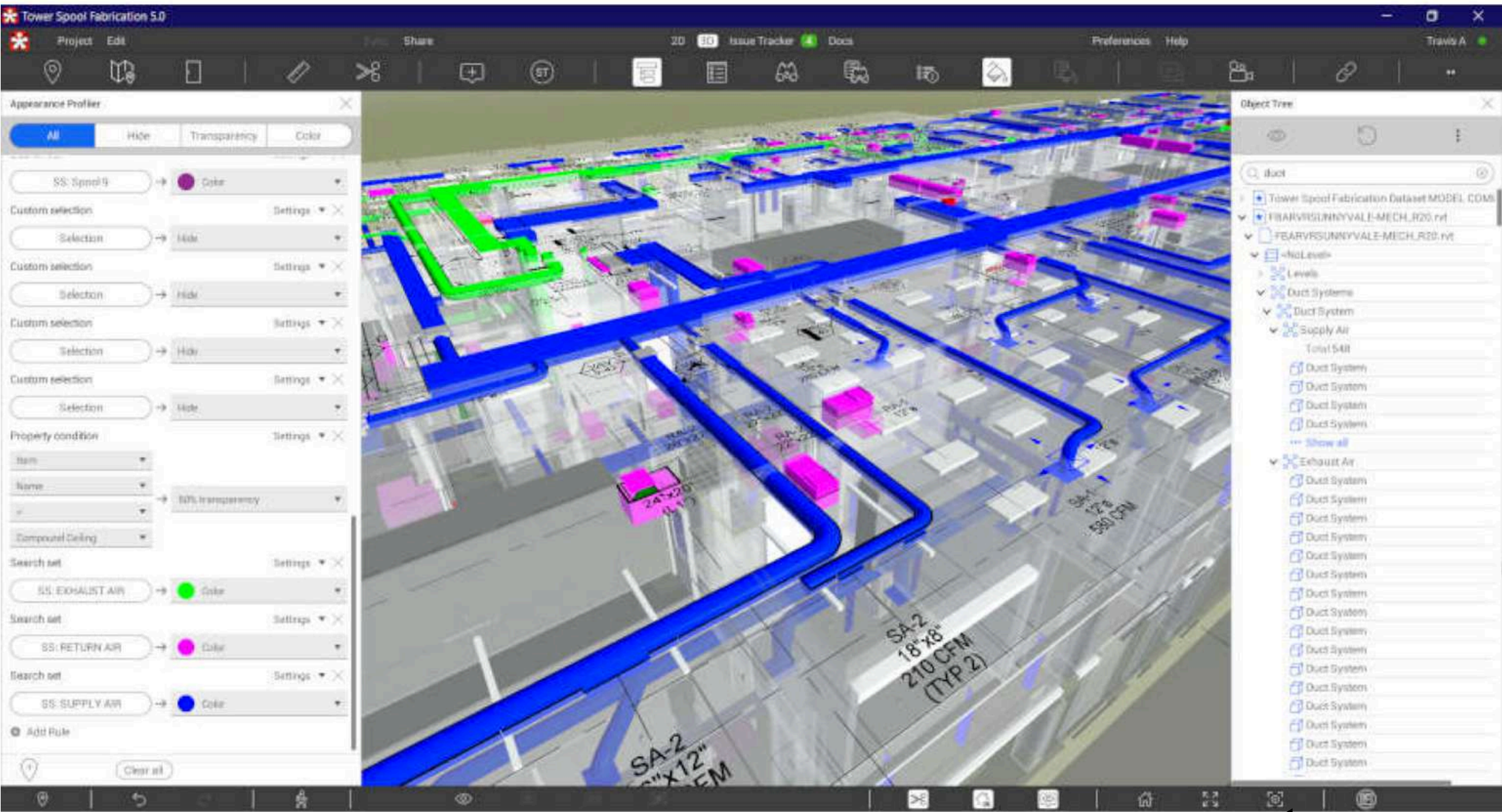
FPS PIPE SCHEDULE				
MATERIAL	SIZE	LENGTH (m)	UNIT COST (RMT)	TOTAL COST
CAST IRON	20ø	12.4	150	1,854
CAST IRON	40ø	14.3	400	5,715
CAST IRON	100ø	16.4	550	8,999

WATER SUPPLY PIPE SCHEDULE				
PIPE MATERIAL	SIZE	LENGTH (m)	UNIT COST (RMT)	TOTAL COST
PPR	25ø	62.1	150	9,312
PPR	40ø	25.3	200	5,053
PPR	50ø	25.0	250	6,250
PPR	80ø	0.7	300	217

WATER SUPPLY PIPE FITTINGS SCHEDULE					
MATERIAL	SIZE (DIA)	ANGLE	UNIT COST (NOS)	QTY	TOTAL COST
ELBOW					
PPR	25ø-25ø	24°	200	2	400
PPR	25ø-25ø	34°	250	2	500
PPR	25ø-25ø	45°	250	2	500
PPR	25ø-25ø	76°	300	2	600
PPR	25ø-25ø	90°	400	16	6400
PPR	40ø-40ø	23°	450	1	450
PPR	40ø-40ø	43°	450	1	450
PPR	40ø-40ø	90°	450	11	4950
PPR	50ø-50ø	24°	500	1	500
PPR	50ø-50ø	34°	500	1	500
PPR	50ø-50ø	42°	500	2	1000
PPR	50ø-50ø	45°	500	1	500
PPR	50ø-50ø	90°	500	8	4000
END CAP					
PPR	50ø		250	2	500
PPR	80ø		800	1	800
REDUCER					
PPR	40ø-25ø		400	2	800
PPR	50ø-40ø		350	4	1400
PPR	80ø-40ø		400	1	400
PPR	80ø-50ø		350	1	350
TEE					
PPR	25ø-25ø-25ø		250	2	500
PPR	40ø-40ø-40ø		400	2	800
PPR	50ø-50ø-40ø		450	4	1800
PPR	50ø-50ø-50ø		500	1	500
PPR	80ø-80ø-50ø		500	4	2000



# Project Short Chats! Whats App Discords



We are using improved version of Collaboration softwares for Review / RFI / Issue Communication etc.,

Short level clarification / Information will be communicated through Whatsapp. So the client team will gets day to day update



Make	Quick status	Doc type	Services	Doc Name	Actual Submission Date	Date of 1st review by Innowell	Status of 1st Review
14	✓	Technical submittal	HVAC	Aluminum Linear 2, 3 & 4 Slot Diffuser	12/05/18	12/07/18	Approve
15	✓	Technical submittal	HVAC	Aluminum Circular Type Diffuser	12/05/18		
16	✓	Technical submittal	HVAC	Aluminum Supply & Return Air Diffuser	12/05/18		
17	✓	Technical submittal	HVAC	Aluminum Horizontal Bar Grille	12/05/18		
18	✓	Technical submittal	HVAC	Aluminum Circular Exhaust Duct Valve	12/05/18	12/07/18	Approve
19	✓	Technical submittal	HVAC	Closed Cell Nitrile Rubber Thermal Insulation	12/05/18	12/07/18	Approve
20	✓	Technical submittal	HVAC	Open Cell Nitrile Rubber Acoustic Insulation	12/05/18		
21	✓	Technical submittal	HVAC	CPVC Drain Pipe	12/05/18	12/07/18	Revise
22	✓	Technical submittal	HVAC	Drain Pump	12/05/18	12/07/18	Approve
23	✓	Shop drawings	HVAC	Second Floor HVAC Shop Drawing	12/05/18	12/06/18	Approve
24	✓	Shop drawings	HVAC	Ground Floor HVAC Shop Drawing	12/05/18		Approve
25	✓	Shop drawings	Electrical	07GA_PDU Panel-GF (W-S)-R2	12/31/18	01/02/19	Approve
26	✓	Shop drawings	Electrical	10GA_HVAC Panel-BF-R2	12/31/18	01/02/19	
27	✓	Shop drawings	Electrical	11GA_HVAC Panel-TF (outdoor)-R2	12/31/18	01/02/19	
28	✓	Shop drawings	Electrical	12GA_SMSB PANEL-1F2-R2			

# Empowering at Cloud Intuitive Collaborate'r

**Print Options**

☐ Include Hidden Columns

☒ Include Comments

**Close** **Print**

**Actual Date of 3rd Submission**

**Date of 3rd review by Innowell**

**Status of 3rd Review**

**Date of Final approval by Innowell**

**Remarks**

**LOI Ref**

**PO Ref**

**Comments**

[lakesh@innowellgroup.com](#) | December 7, 2018 7:48 PM  
Status:  
Revise and resubmit.  
1. Submitted make is not as per Approved list of make.

[santhoshrao@vayucon.in](#) | December 13, 2018 1:23 PM  
Prince Make is a part of tender makes.

Cloud based “Intuitive Collaborate'r” ensures live engagement of all Project Stakeholder and empowers seamless delivery of Designs and Documents.



We are familiar with

The software we utilising for our projects

Design Tools



Presentation Tools



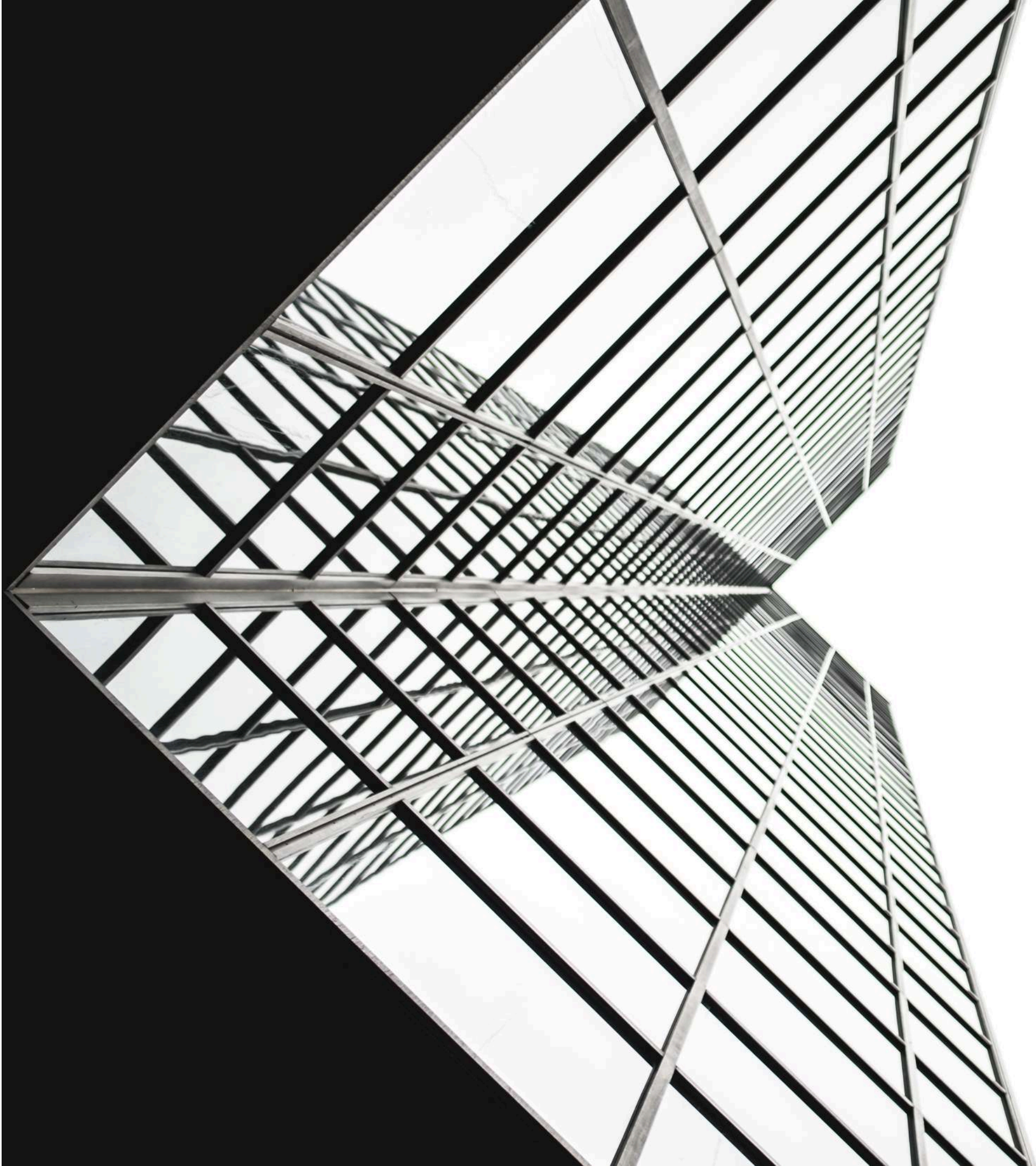
Collaboration Tool



Documentation Management Platform







# **BIM Project Highlights**





# DELL Crystal Down

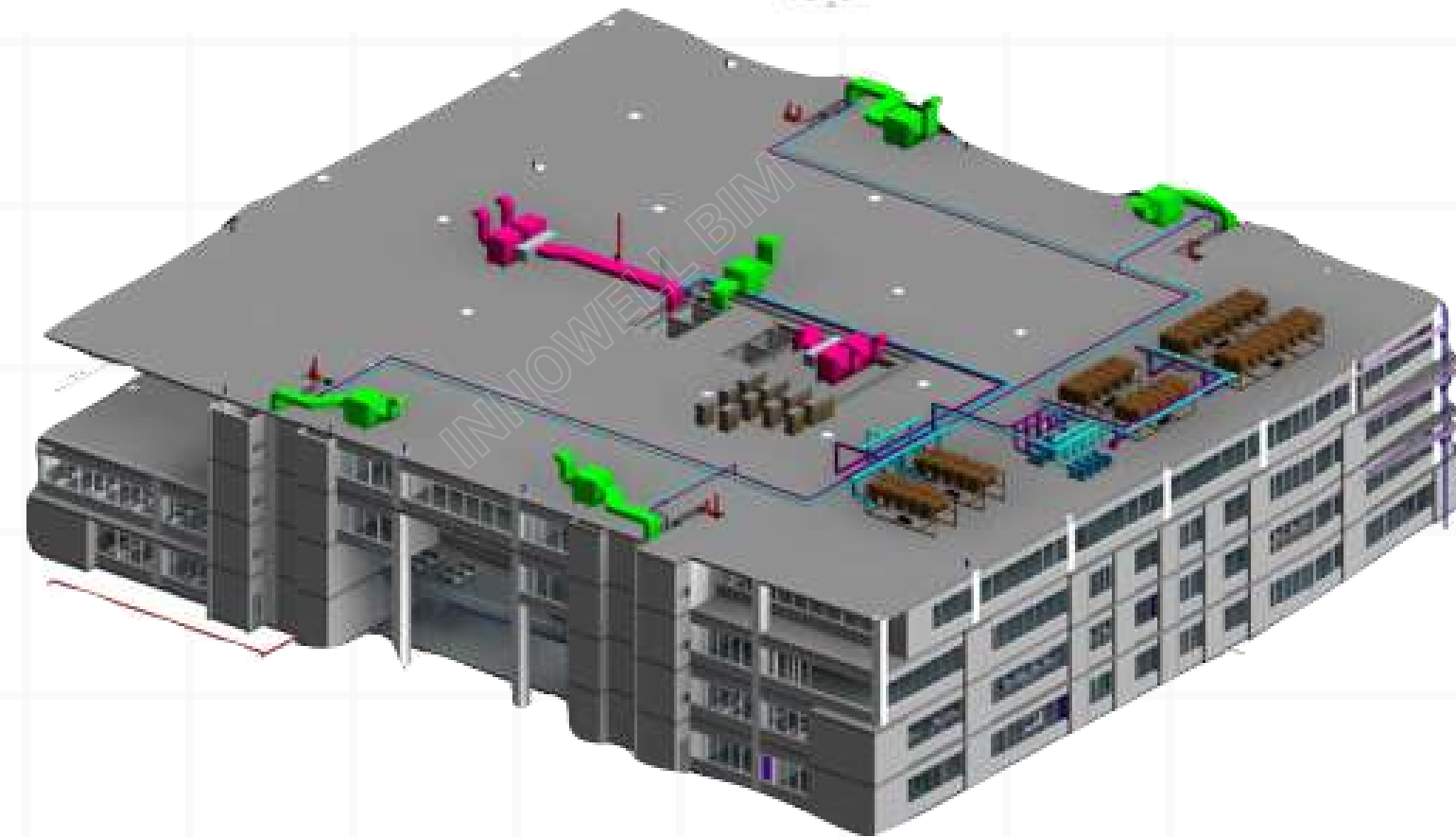
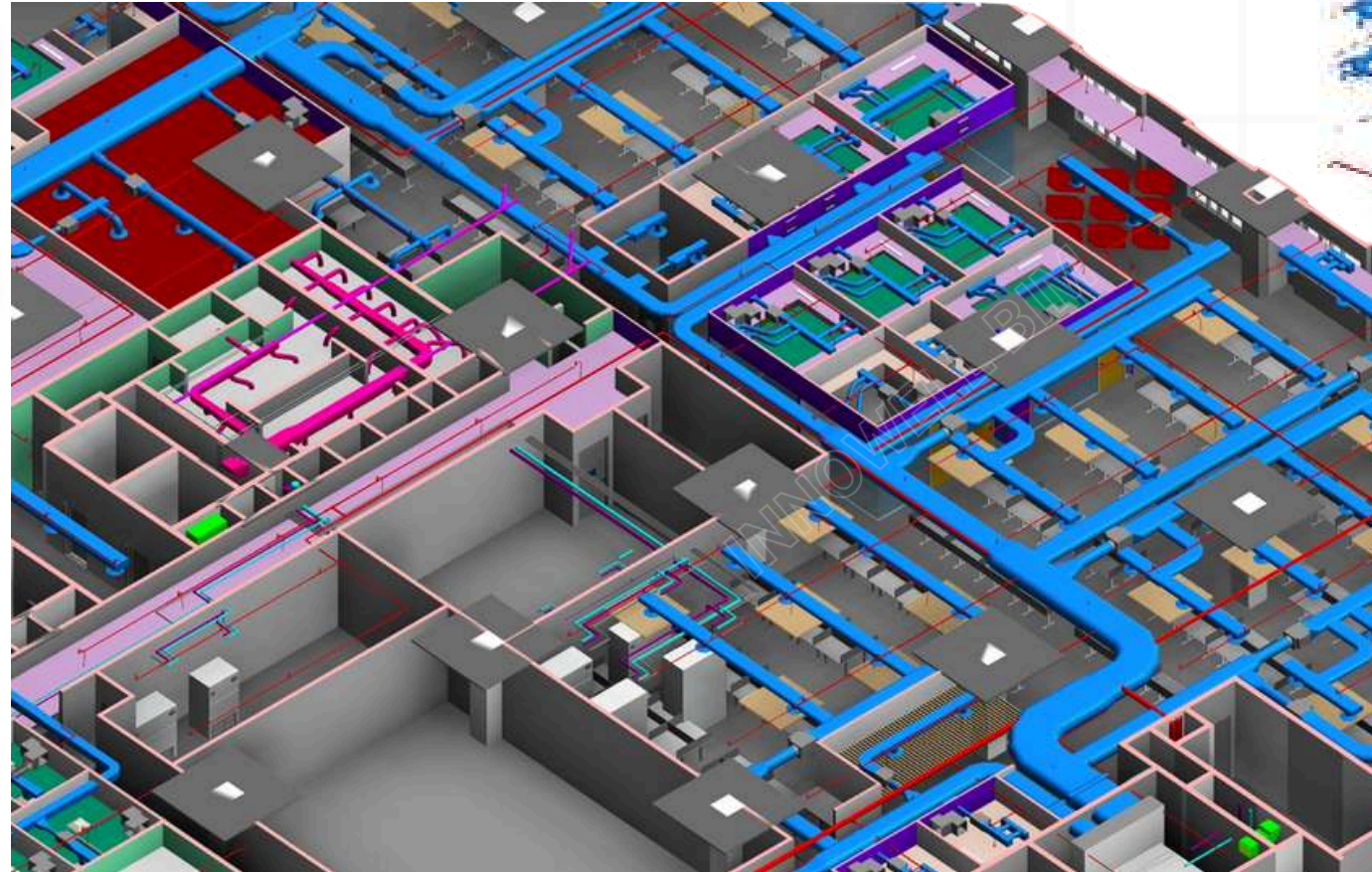
Bangalore, Karnataka

Project Type:  
Office Building

Scope of work:

BIM + Engineering

Size: 200,000 SFT



## MEP Coordination





# HP Enterprise

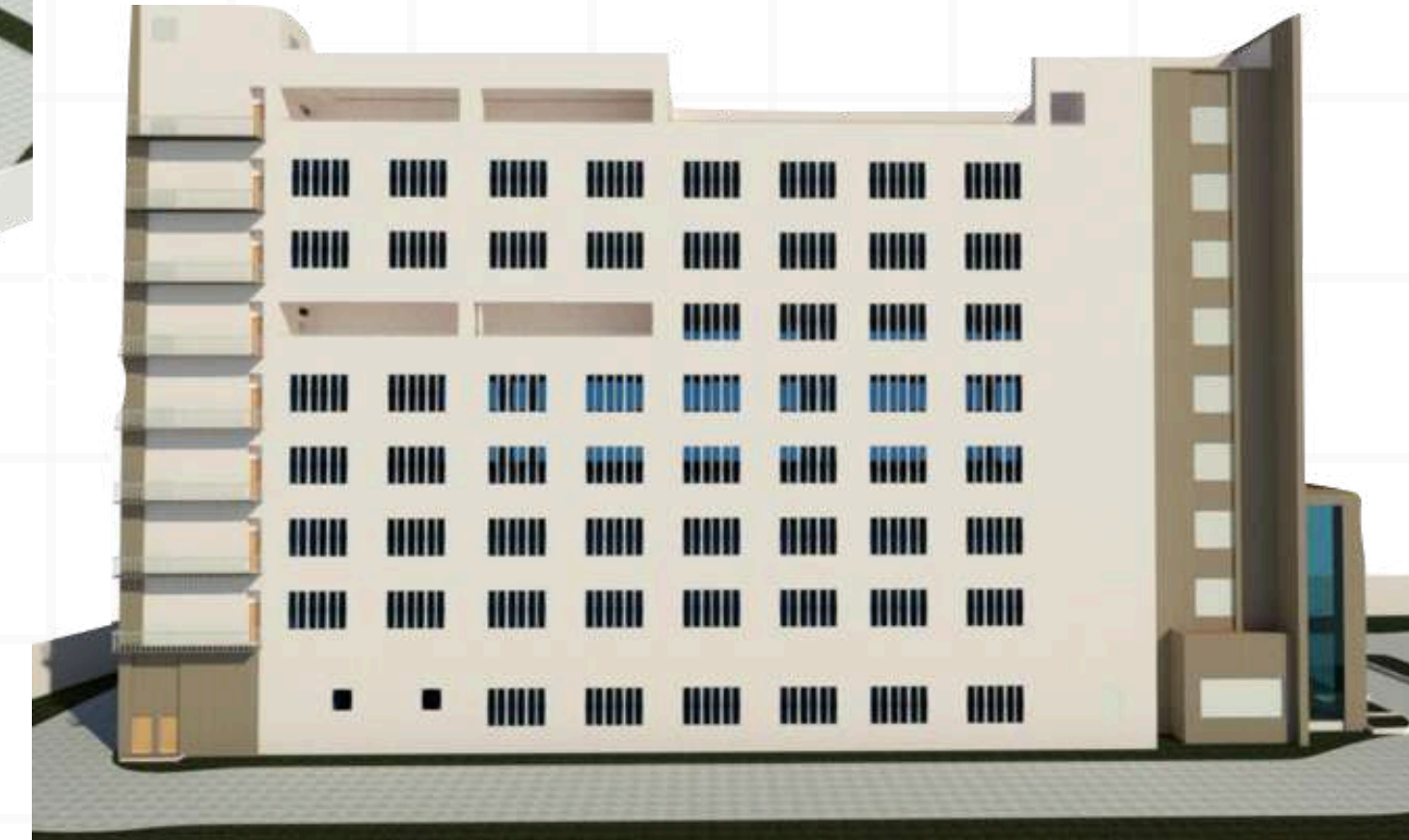
India

Project Type:  
Office Building

## Scope of work:

MEP Design,  
Model Coordination  
& Quantification

**Size: 170,000 SFT**



Arch Model - LOD - 200





# HP Enterprise

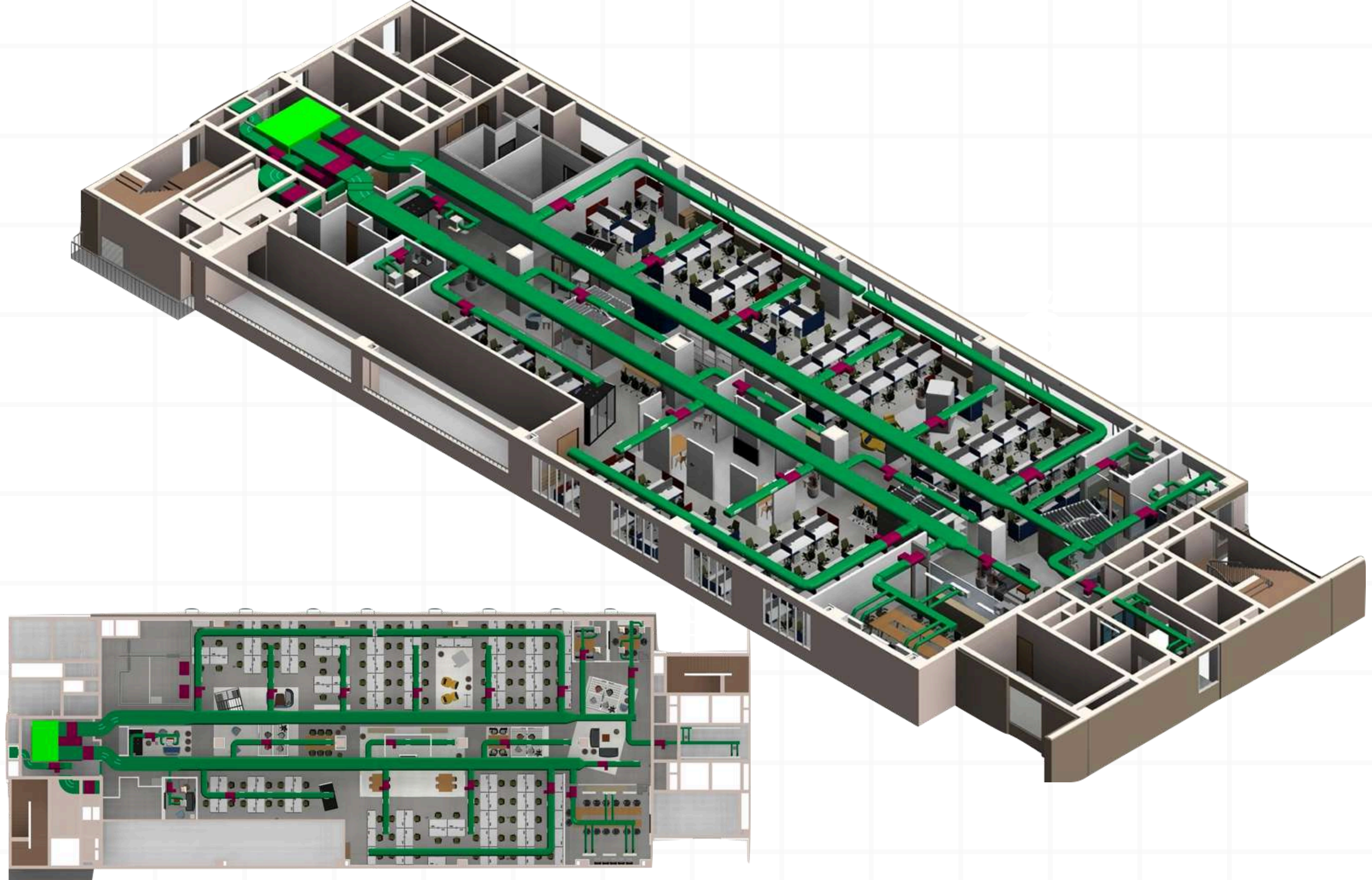
India

Project Type:  
Office Building

## Scope of work:

MEP Design,  
Model Coordination  
& Quantification

**Size: 170,000 SFT**



MEP Model - LOD - 300



# Rajam IT Park

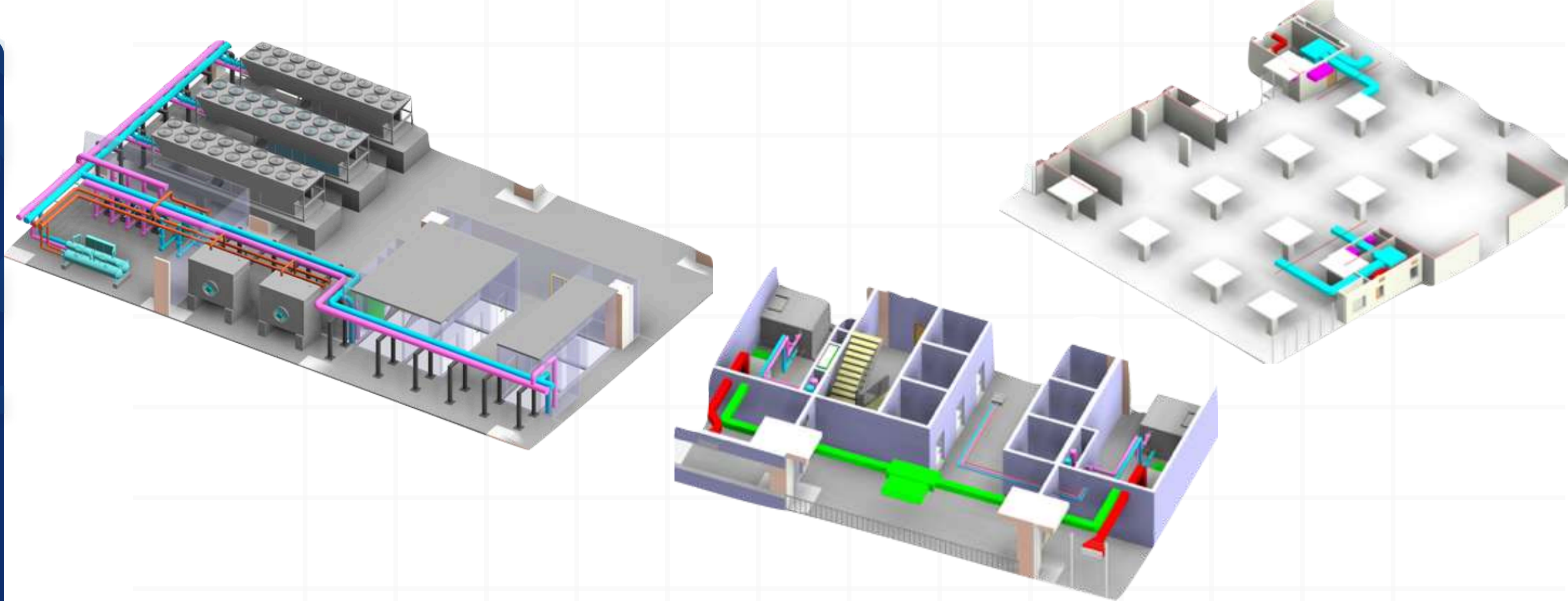
Hyderabad, India

Project Type:  
Office Building

Scope of work:

HVAC Modelling

Size: 500,000 SFT



HVAC Design



# East Co Development AZ

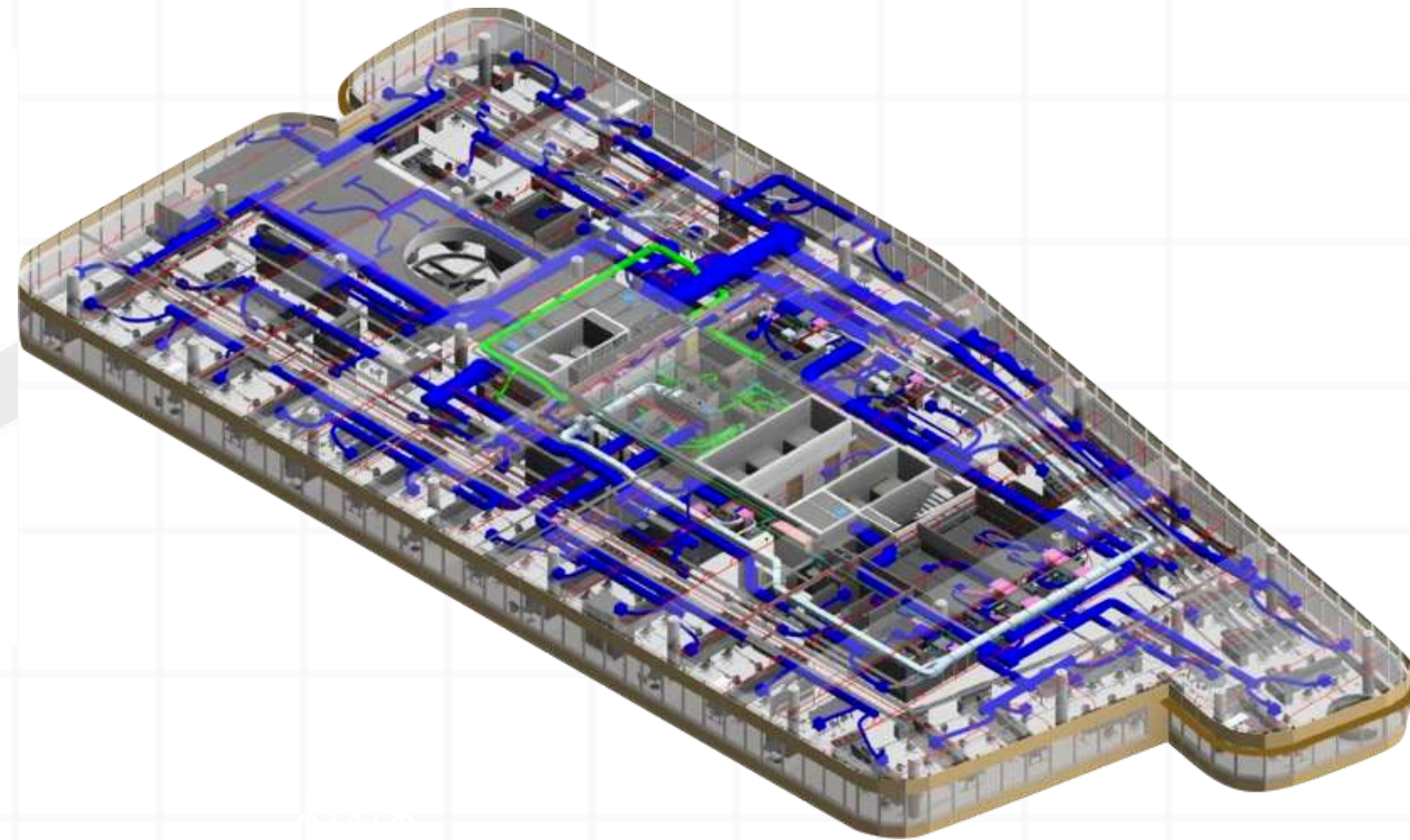
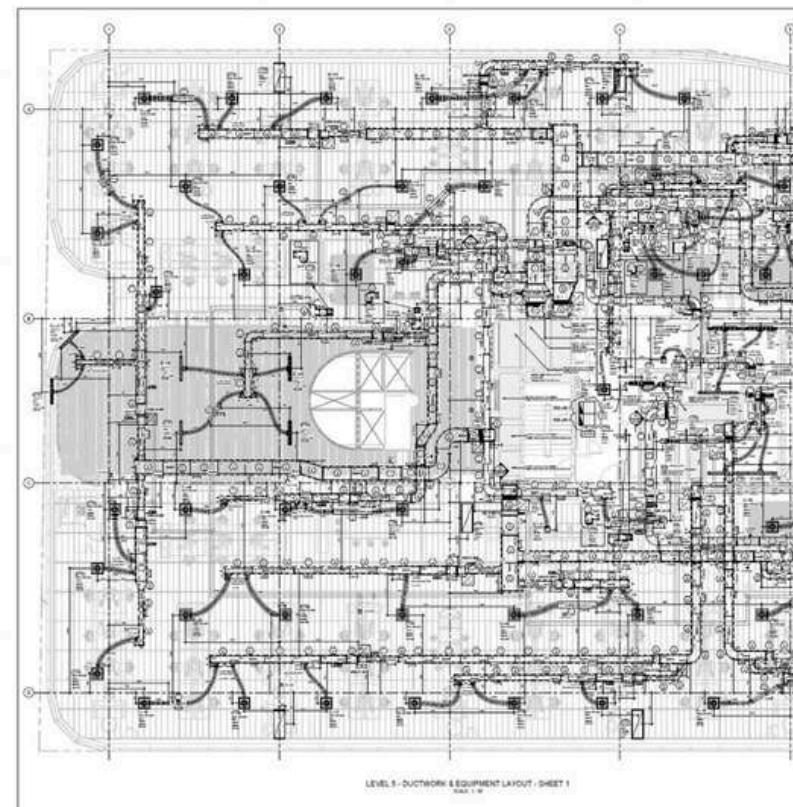
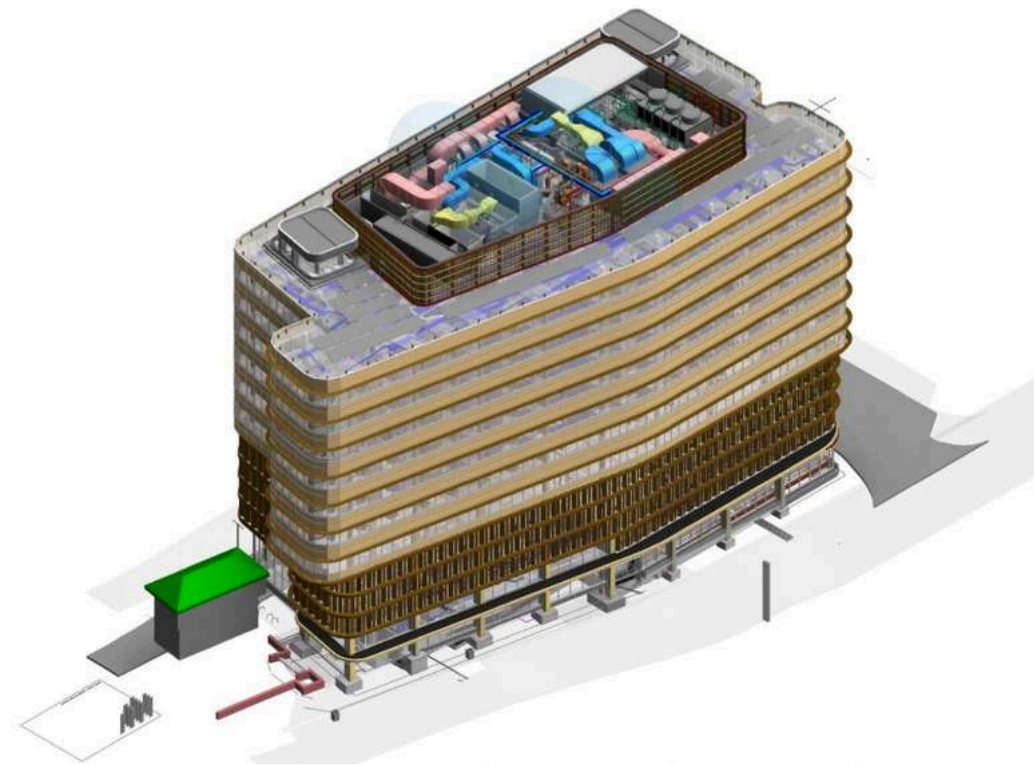
Australia

Project Type:  
Office Building

## Scope of work:

HVAC Fabrication Ductwork  
& Quantification

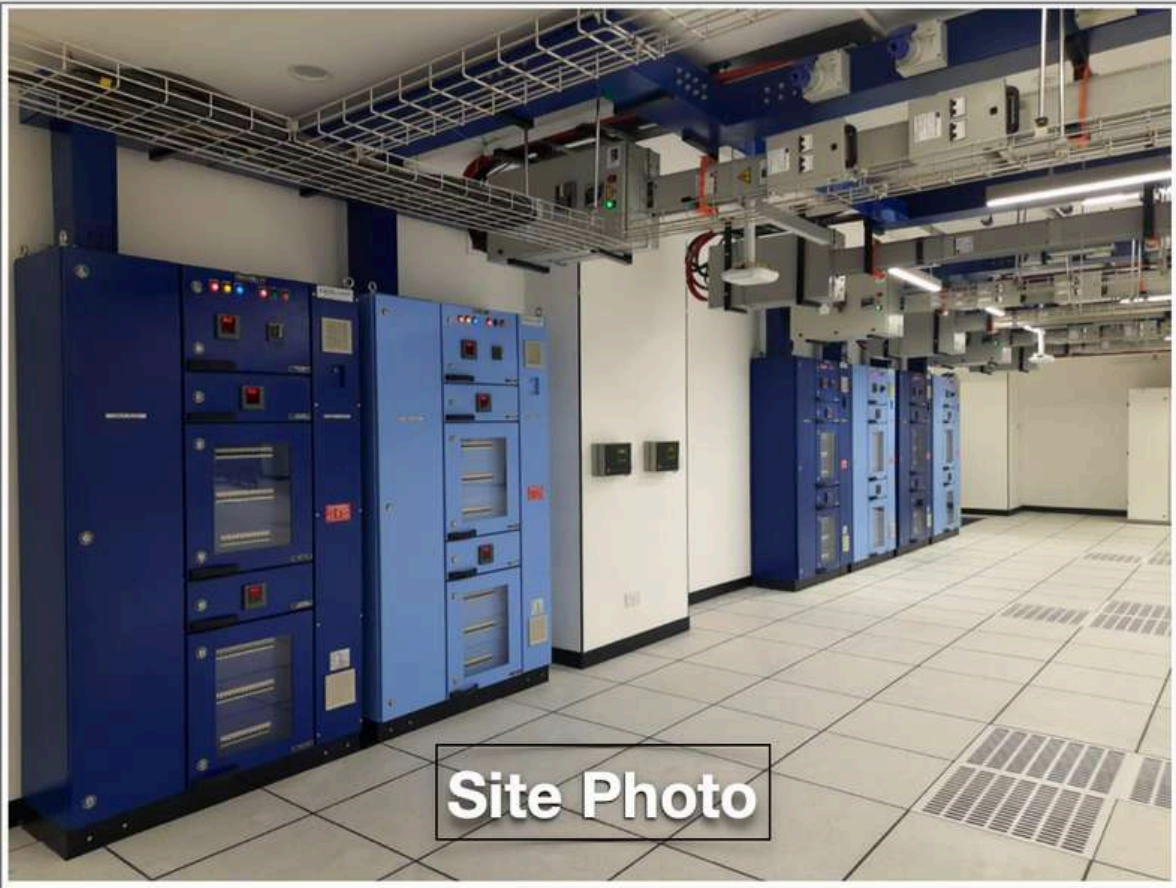
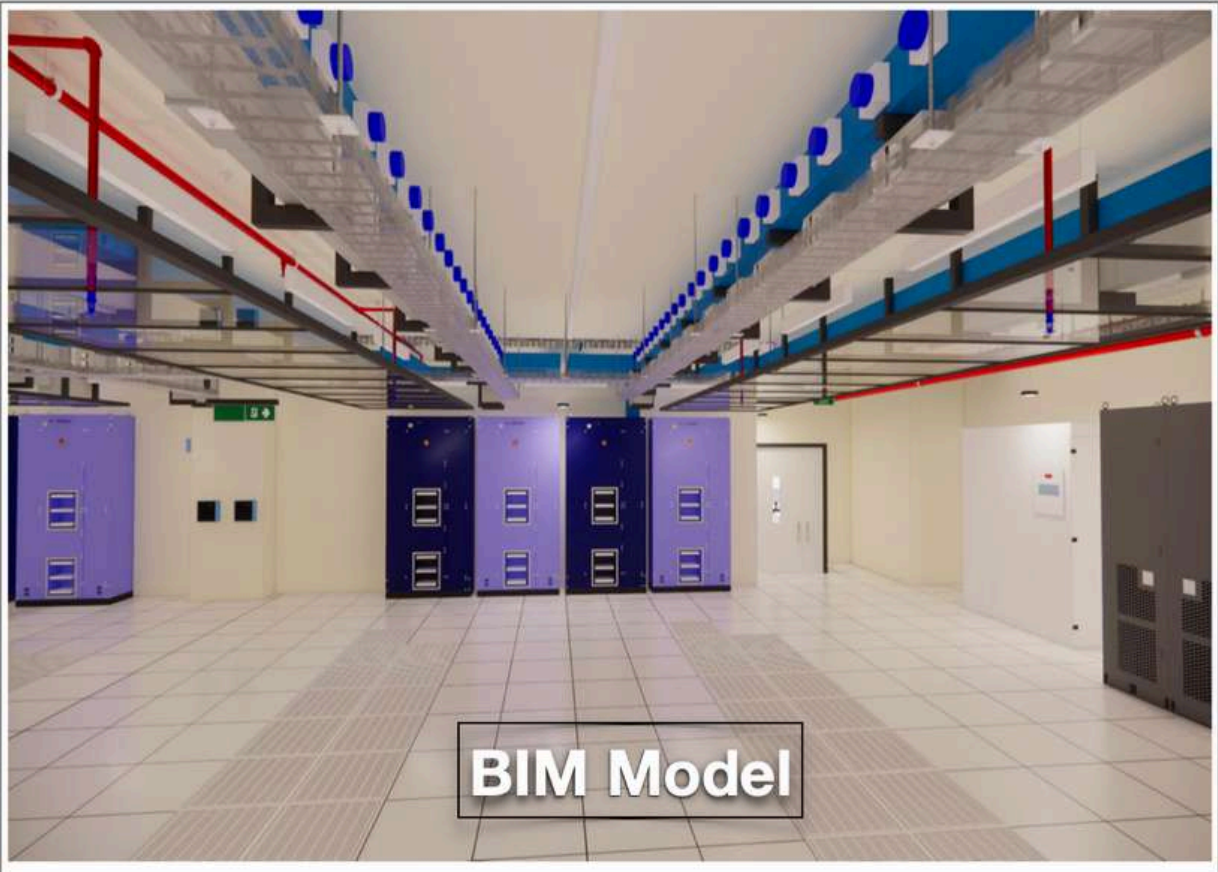
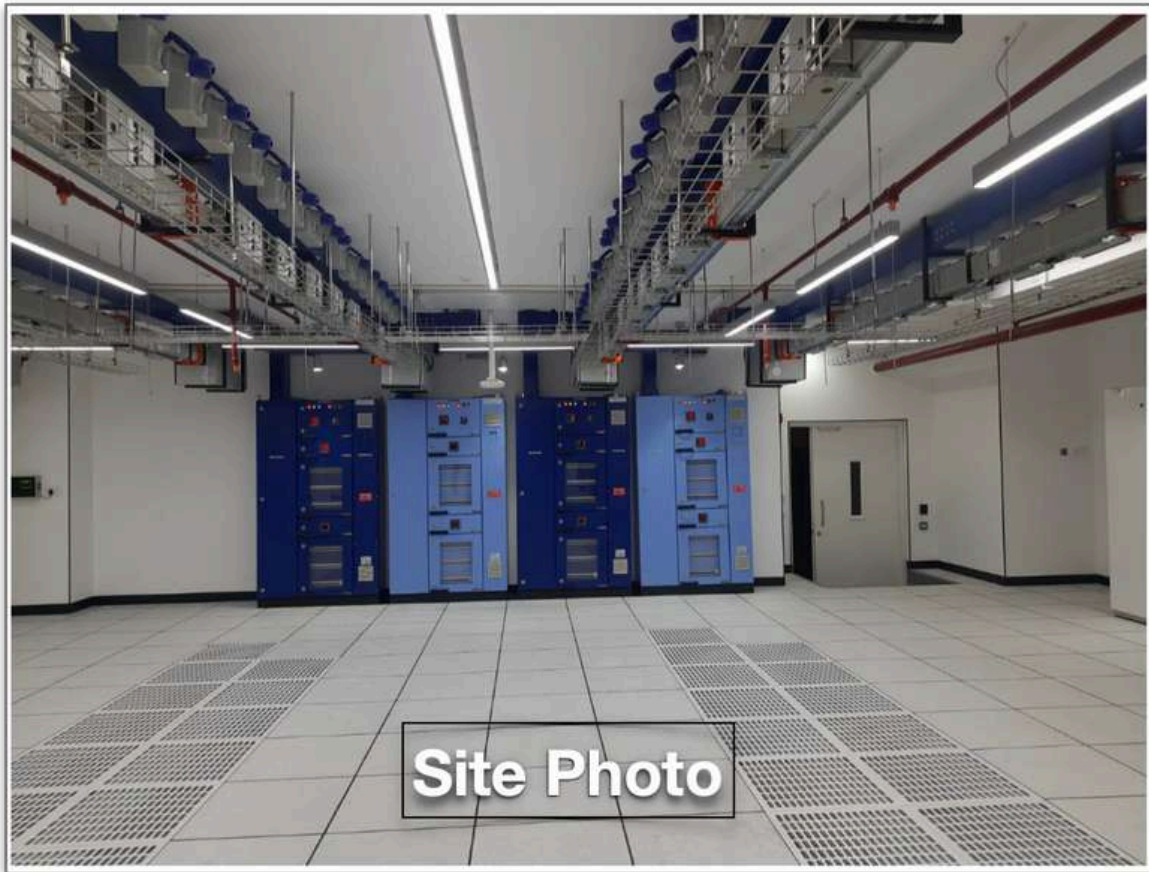
Size: 500,000 SFT



HVAC Fabrication Ductwork  
& Quantification



# Data Centre Building







# Sustainability Project Highlights





# DUBAI SILICON OASIS AUTHORITY HIGH BAY BUILDING

49MQ+466 - Dubai Silicon Oasis - Industrial Area  
- Dubai - United Arab Emirates



The first LEED v4.1 O+M factory to  
achieve LEED Earth in UAE.



# DELL CRYSTAL DOWN

Bangalore, Karnataka,  
India

Project Size: 200,000 sq ft



➤ Points Achieved

62/110

➤ Certified on

February, 2021

➤ Version

version 2

➤ Category

New Interior





# COGNIZANT ILP 2

Coimbatore, Tamilnadu,  
India

Project Size: 173,480 sq ft



➤ Points Achieved

74/110

➤ Certified on

March, 2022

➤ Version

LEED v4

➤ Category

ID+C: Commercial Interiors



INNOWELL





# CTRLS DATACENTER AT PIONEER TOWERS

HITEC City, Hyderabad,  
India.

*Project size: 160,230 sq ft*



The first LEED v4 O+M Platinum  
certified Datacenter in the world





Apollo Tyres, Chennai



Salcomp, Chennai



Zoho Tenkasi



Cognizant - Ozone Techno Park, Chennai



TPI Composites, Chennai



Mondelez Internal, Sricity



STTG Data Centre, Chennai & Pune



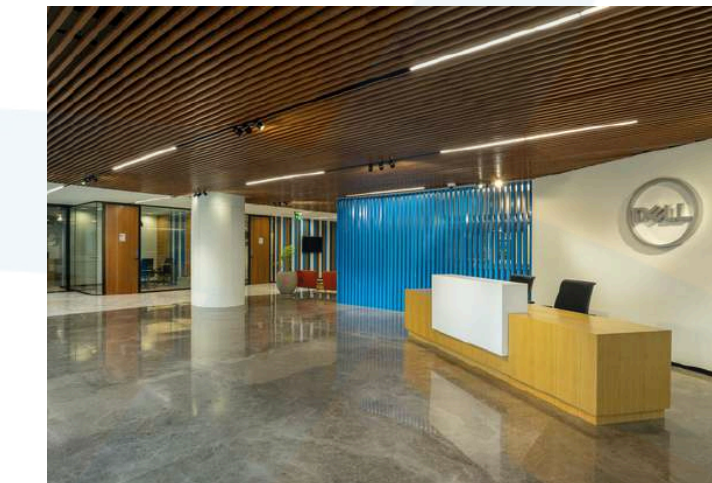
DELL, Hyderabad



Saint Gobin India Pvt Ltd



ITC - Paperboards and  
Specialty Papers Division,  
Telungana.



DELL Crystal Down, Bangalore



Tata Communications, Bangalore





Apollo Tyres, Chennai



Pfizer , Chennai



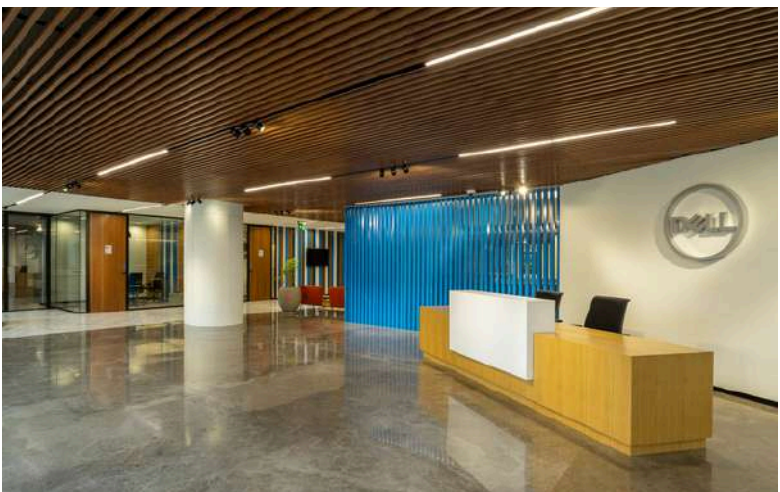
Dell Fountain Head , Bangalore



Tata Communication ,  
Banglore



Taj Exotica - Andaman



DELL @ Crystal Down , Bangalore



Auditorium @ IIT RP



Tata Conusmer Products Ltd, Gopalpur



Aruba HPE , Bangalore



# Our Prestigious Clients in India

## Industrial / Warehouse



## IT Office / Commercial / Labs/Hospitals





# Our Prestigious Clients in Abroad



CROSSLINE

ECHOTEX

STANDARD GROUP



سلطة واحة دبي للسيليكون  
Dubai Silicon Oasis Authority





# Innowell Engineering International Pvt Ltd

## **SIVAKASI**

2/44, 2/45 Maraneri,  
Sivakasi,  
Virudhunagar – 626124,  
Tamil Nadu, India.

✉ info@innowellgroup.com  
☎ +91 91509 12319

## **CHENNAI**

269/3B, 1st & 2nd Floor,  
First Cross Street , Vimalraj  
Salai , Netaji Nagar,  
Alapakkam main Road ,  
Maduravayal, Chennai,  
Tamil Nadu-600095

✉ info@innowellgroup.com  
☎ +91 98846 59976

## **BANGALORE**

319 First floor, Third Cross,  
NGEF Layout Kasturi Nagar,  
Ramamurthy Nagar,  
Bengaluru-560016,  
Karnataka, India

✉ samuel@innowellgroup.com  
☎ +91 99723 00436

## **HYDERABAD**

Plot no - 111,  
KPHB Colony,  
Behind Nexus Mall,  
Hyderabad,  
Telangana-500072.

✉ syed@innowellgroup.com  
☎ +91 62815 97156



**INNOWELL**

[www.innowellgroup.com](http://www.innowellgroup.com)

For detailed information, contact concerned account manager.



<https://www.linkedin.com/company/innowell-engineering-international-pvt-ltd/>